

**INSTRUMENT  
APPROACH  
CHART - ICAO**

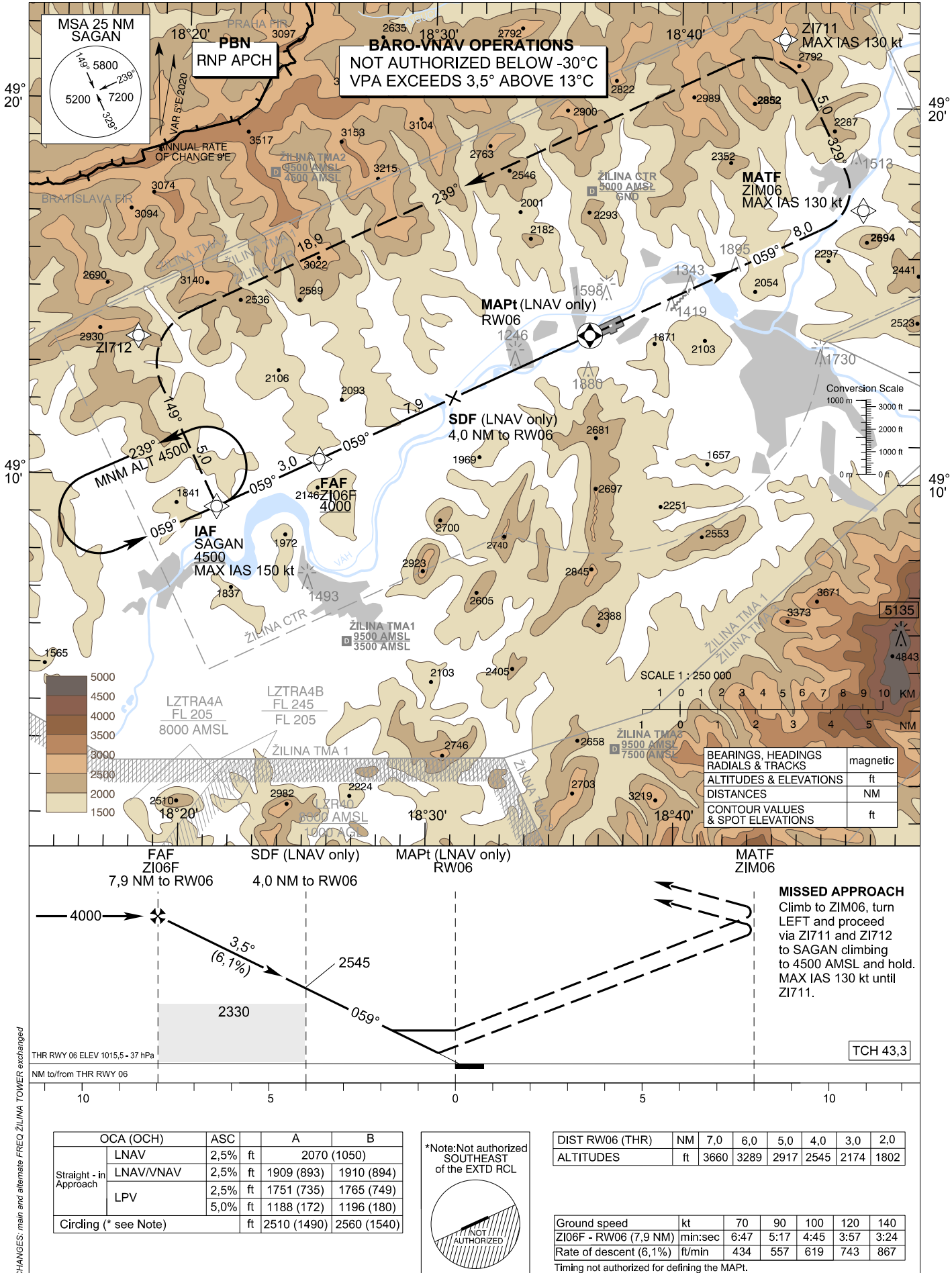
TRANSITION ALTITUDE  
10 000 ft

AD ELEV 1020 - 37 hPa  
THR RWY 06 ELEV 1015,5 - 37 hPa

ŽILINA TOWER 124,150 (118,400)

EGNOS  
CH 41229  
E06A

**ŽILINA (LZZI)  
RNP RWY 06  
ACFT CAT A/B**



CHANGES: main and alternate FREQ ŽILINA TOWER exchanged

### Instrument Approach Procedure Coding Table: Žilina RNP RWY 06

Path Terminator	Waypoint				Course / Track MAG (True)	DIST	Turn Direction	Constraints		Navigation Specification
	Identifier	Type	Flyover	Coordinates				Level	Speed	
IF	SAGAN	IAF	NO	49°09'11.45"N 018°21'21.59"E	-	-	-	A4500+	K150-	RNP APCH
TF	ZI06F	FAF	NO	49°10'28.88"N 018°25'29.13"E	059° (064.5°)	3.0 NM	-	A4000+	-	RNP APCH
TF	RW06	MAPt	YES	49°13'52.43"N 018°36'23.20"E	059° (064.5°)	7.9 NM	-	-	-	RNP APCH
TF	ZIM06	MATF	NO	49°17'17.14"N 018°47'25.86"E	059° (064.7°)	8.0 NM	-	-	K130-	RNP APCH
TF	ZI711	-	NO	49°21'48.32"N 018°44'10.47"E	329° (334.8°)	5.0 NM	LEFT	-	K130-	RNP APCH
TF	ZI712	-	NO	49°13'41.91"N 018°18'04.37"E	239° (244.8°)	18.9 NM	LEFT	-	-	RNP APCH
TF	SAGAN	MAHF	YES	49°09'11.45"N 018°21'21.59"E	149° (154.4°)	5.0 NM	LEFT	A4500	-	RNP APCH

RNAV Holding							
Holding Point	Inbound Track MAG (True)	Turn Direction	MAX IAS	Minimum Holding Altitude	Time	DIST MAHF	Remarks
SAGAN	059° (064.4°)	LEFT	-	A4500	1 MIN	-	-

### SBAS FAS Data Block Coding Table Žilina RNP RWY 06

Input data	
Operation Type	0
SBAS Provider	1 (EGNOS)
Airport Identifier	LZZI
Runway	06
Runway Letter	0 (None)
Approach Performance Designator	0
Route Indicator	
Reference Path Data Selector	0
Reference Path Identifier	E06A
LTP/FTP Latitude	491352.4305N
LTP/FTP Longitude	0183623.1990E
LTP/FTP Ellipsoidal Height (metres)	352.1
FPAP Latitude	491408.3400N
Delta FPAP Latitude (seconds)	15.9095
FPAP Longitude	0183714.5245E
Delta FPAP Longitude (seconds)	51.3255
Threshold Crossing Height	13.2
TCH Units Selector	1 (meters)
Glidepath Angle (degrees)	3.50
Course Width (metres)	105.00
Length Offset (metres)	0
HAL (metres)	40.0
VAL (metres)	35.0
Output data	
Data Block	10 09 1A 1A 0C 06 00 00 01 36 30 05 5D B4 20 15 3E 2A FC 07 C1 21 4B 7C 00 FB 90 01 08 81 5E 01 64 00 C8 AF E4 01 22 B1
Calculated CRC Value	E40122B1
Required Additional Data	
ICAO Code	LZ
LTP/FTP Orthometric Height (metres)	309.5