

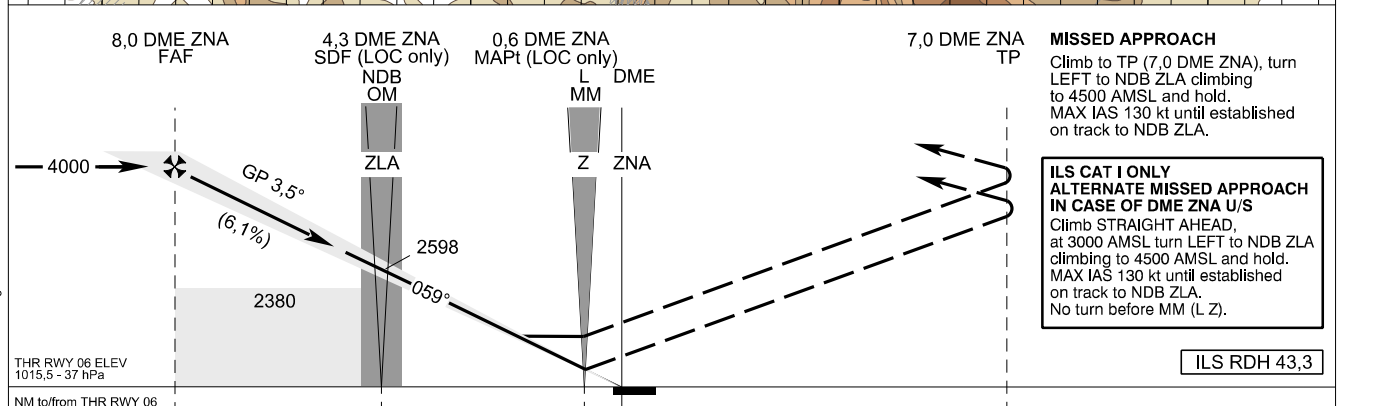
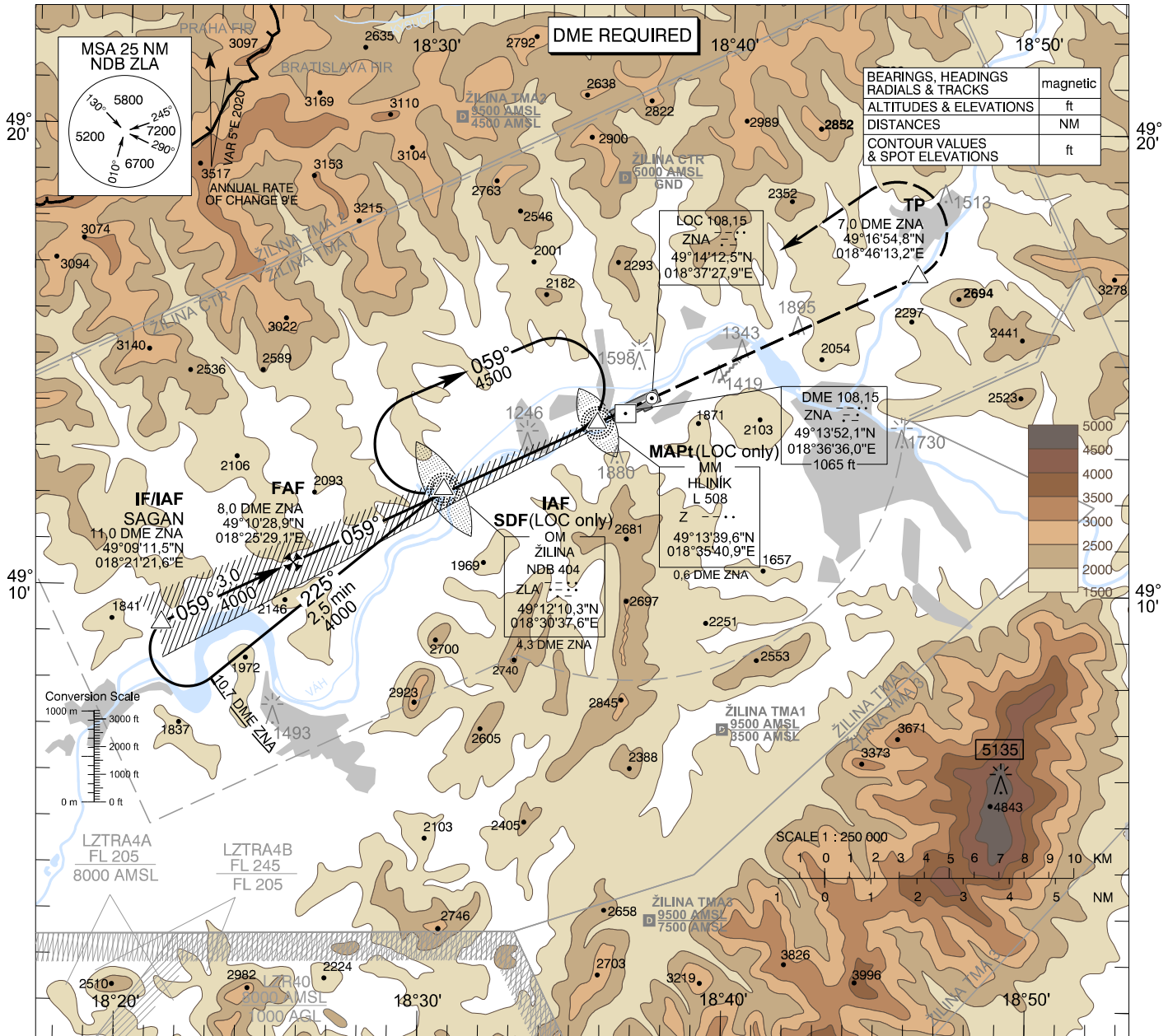
**INSTRUMENT  
APPROACH  
CHART - ICAO**

**TRANSITION ALTITUDE**  
10 000 ft

AD ELEV 1020 - 37 hPa  
THR RWY 06 ELEV 1015,5 - 37 hPa

**ŽILINA TOWER** 124,150 (118,400)

**ŽILINA (LZZI)  
ILS CAT I or LOC RWY 06  
ACFT CAT A/B**



OCA (OCH)		ASC	A	B	
Straight-in Approach	CAT I	2,5% ft	1756 (740)	1770 (754)	
		5,0% ft	1188 (172)	1196 (180)	
	LOC	without SDF	2,5% ft	2380 (1360)	
		with SDF	2,5% ft	1870 (850)	
Circling (* see Note)			2510 (1490)	2560 (1540)	

\*Note: Not authorized SOUTHEAST of the EXT D RCL

DME ZNA	NM	7,0	6,0	5,0	4,0	3,0	2,0
ALTITUDES	ft	3614	3242	2871	2499	2127	1755

Ground speed	kt	70	90	100	120	140
FAF - MAPt (7,4 NM)	min:sec	6:21	4:56	4:27	3:42	3:10
Rate of descent (6,1%)	ft/min	434	557	619	743	867

Timing not authorized for defining the MAPt