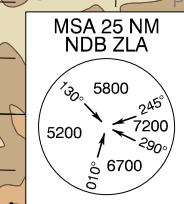
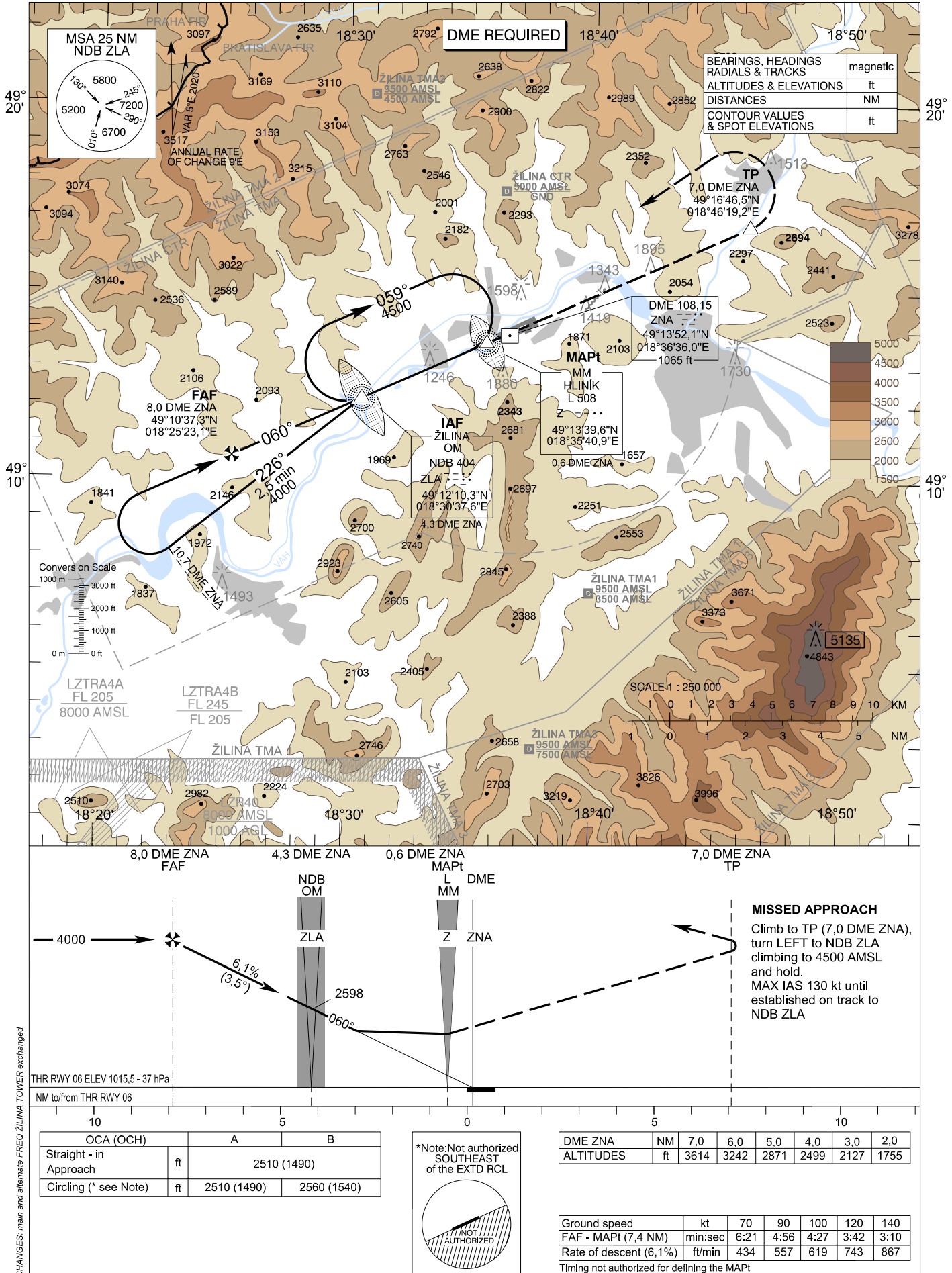


**INSTRUMENT
APPROACH
CHART - ICAO**

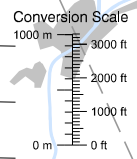
TRANSITION ALTITUDE
10 000 ft
AD ELEV 1020 -37 hPa
THR RWY 06 ELEV 1015,5 -37 hPa

ŽILINA TOWER 124,150 (118,400)

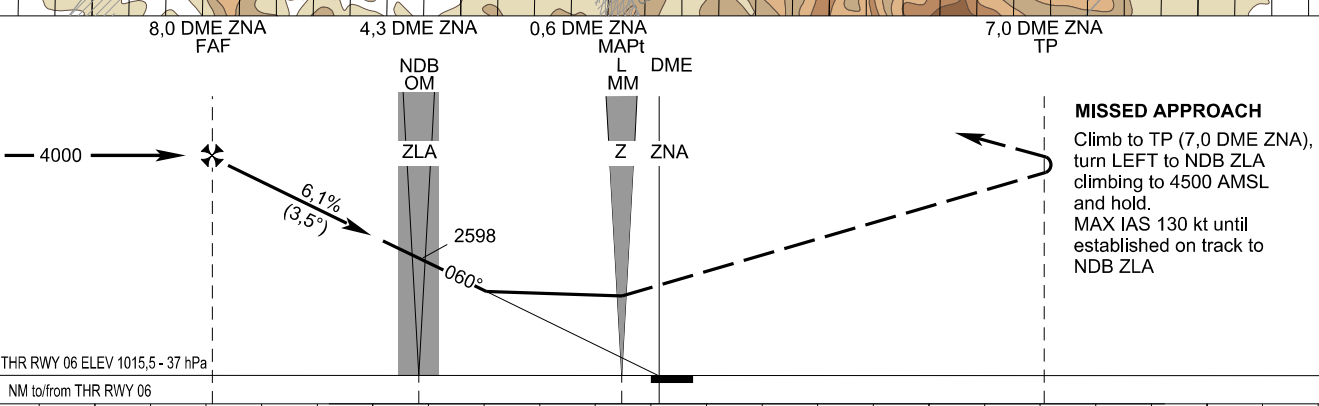
**ŽILINA (LZZI)
NDB RWY 06
ACFT CAT A/B**



BEARINGS, HEADINGS, RADIALS & TRACKS	magnetic
ALTITUDES & ELEVATIONS	ft
DISTANCES	NM
CONTOUR VALUES & SPOT ELEVATIONS	ft



LZTRA4A FL 205 8000 AMSL
LZTRA4B FL 205



THR RWY 06 ELEV 1015,5 - 37 hPa
NM to/from THR RWY 06

OCA (OCH)		A		B	
Straight - in Approach	ft	2510 (1490)			
Circling (* see Note)	ft	2510 (1490)	2560 (1540)		

*Note: Not authorized SOUTHEAST of the EXTD RCL

DME ZNA	NM	7,0	6,0	5,0	4,0	3,0	2,0
ALTITUDES	ft	3614	3242	2871	2499	2127	1755

Ground speed	kt	70	90	100	120	140
FAF - MAPt (7,4 NM)	min:sec	6:21	4:56	4:27	3:42	3:10
Rate of descent (6,1%)	ft/min	434	557	619	743	867

Timing not authorized for defining the MAPt

CHANGES: main and alternate FREQ ŽILINA TOWER exchanged