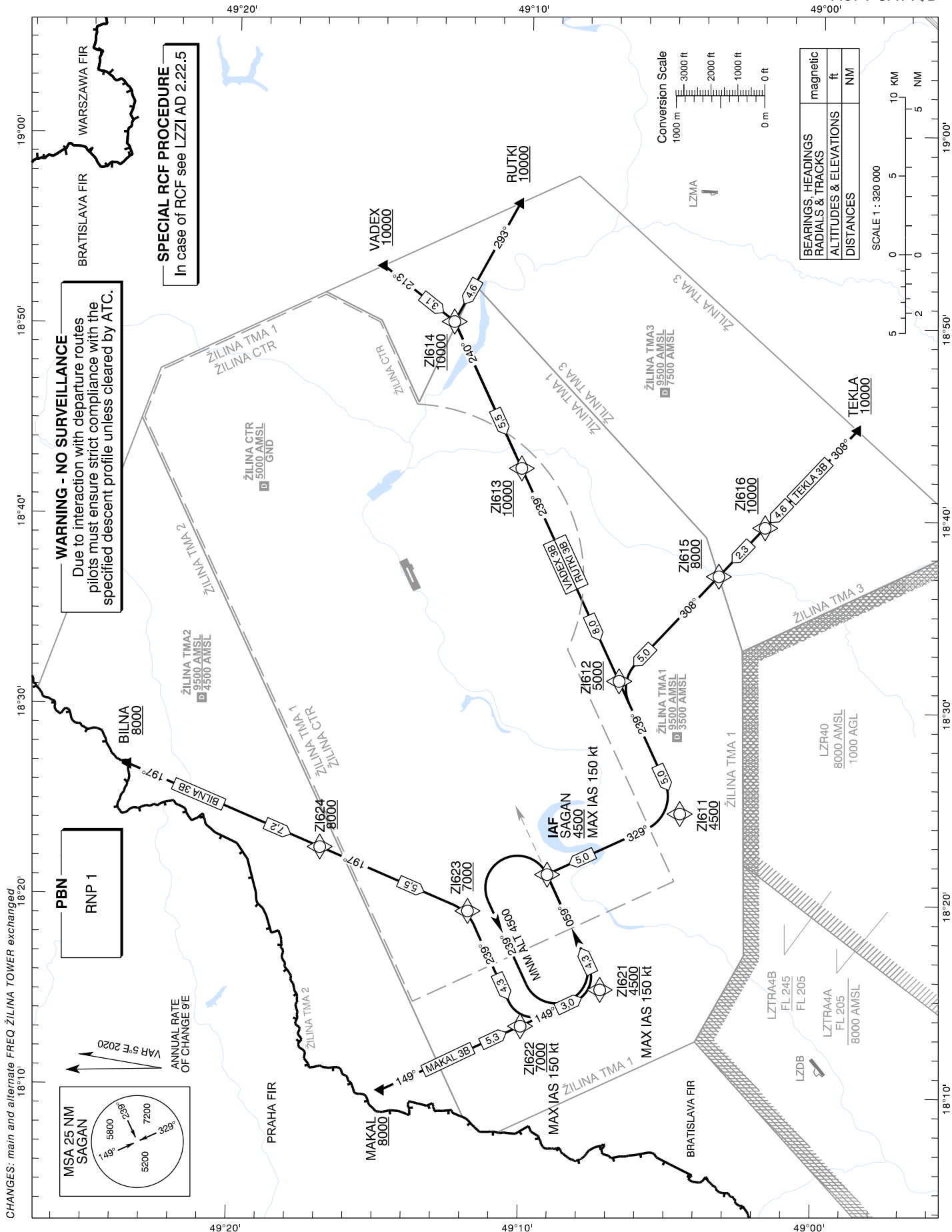


STANDARD ARRIVAL CHART -
INSTRUMENT (STAR) - ICAO

TRANSITION ALTITUDE
10 000 ft

ŽILINA TOWER 124,150 (118,400)

ŽILINA (LZZI)
RNP 1 STAR RWY 06
ACFT CAT A/B



RNP 1 STAR Coding Table: BILNA 3B

Path Terminator	Waypoint			Course / Track MAG (True)	DIST	Turn Direction	Constraints		Navigation Specification
	Identifier	Flyover	Coordinates				Level	Speed	
IF	BILNA	NO	49°23'36,79"N 018°26'50,28"E	-	-	-	A8000+	-	RNP 1
TF	ZI624	NO	49°16'59,72"N 018°22'37,38"E	197° (202,6°)	7,2 NM	-	A8000+	-	RNP 1
TF	ZI623	NO	49°11'53,74"N 018°19'23,33"E	197° (202,6°)	5,5 NM	-	A7000+	-	RNP 1
TF	ZI622	NO	49°10'01,25"N 018°13'24,96"E	239° (244,5°)	4,3 NM	RIGHT	A7000+	K150-	RNP 1
TF	ZI621	NO	49°07'19,07"N 018°15'23,46"E	149° (154,4°)	3,0 NM	LEFT	A4500+	K150-	RNP 1
TF	SAGAN	NO	49°09'11,45"N 018°21'21,59"E	059° (064,4°)	4,3 NM	LEFT	A4500+	K150-	RNP 1

RNP 1 STAR Coding Table: MAKAL 3B

Path Terminator	Waypoint			Course / Track MAG (True)	DIST	Turn Direction	Constraints		Navigation Specification
	Identifier	Flyover	Coordinates				Level	Speed	
IF	MAKAL	NO	49°14'45,63"N 018°09'56,58"E	-	-	-	A8000+	-	RNP 1
TF	ZI622	NO	49°10'01,25"N 018°13'24,96"E	149° (154,3°)	5,3 NM	-	A7000+	K150-	RNP 1
TF	ZI621	NO	49°07'19,07"N 018°15'23,46"E	149° (154,4°)	3,0 NM	-	A4500+	K150-	RNP 1
TF	SAGAN	NO	49°09'11,45"N 018°21'21,59"E	059° (064,4°)	4,3 NM	LEFT	A4500+	K150-	RNP 1

RNP 1 STAR Coding Table: TEKLA 3B

Path Terminator	Waypoint			Course / Track MAG (True)	DIST	Turn Direction	Constraints		Navigation Specification
	Identifier	Flyover	Coordinates				Level	Speed	
IF	TEKLA	NO	48°58'45,84"N 018°44'43,15"E	-	-	-	A10000+	-	RNP 1
TF	ZI616	NO	49°01'53,81"N 018°39'35,98"E	308° (313,0°)	4,6 NM	-	A10000+	-	RNP 1
TF	ZI615	NO	49°03'27,64"N 018°37'02,26"E	308° (312,9°)	2,3 NM	-	A8000+	-	RNP 1
TF	ZI612	NO	49°06'49,67"N 018°31'30,43"E	308° (312,9°)	5,0 NM	-	A5000+	-	RNP 1
TF	ZI611	NO	49°04'40,90"N 018°24'38,21"E	239° (244,6°)	5,0 NM	LEFT	A4500+	-	RNP 1
TF	SAGAN	NO	49°09'11,45"N 018°21'21,59"E	329° (334,5°)	5,0 NM	RIGHT	A4500+	K150-	RNP 1

RNP 1 STAR Coding Table: RUTKI 3B									
Path Terminator	Waypoint			Course / Track MAG (True)	DIST	Turn Direction	Constraints		Navigation Specification
	Identifier	Flyover	Coordinates				Level	Speed	
IF	RUTKI	NO	49°10'23,87"N 018°56'24,33"E	-	-	-	A10000+	-	RNP 1
TF	ZI614	NO	49°12'37,02"N 018°50'11,88"E	293° (298,6°)	4,6 NM	-	A10000+	-	RNP 1
TF	ZI613	NO	49°10'15,60"N 018°42'33,61"E	240° (244,8°)	5,5 NM	LEFT	A10000+	-	RNP 1
TF	ZI612	NO	49°06'49,67"N 018°31'30,43"E	239° (244,7°)	8,0 NM	-	A5000+	-	RNP 1
TF	ZI611	NO	49°04'40,90"N 018°24'38,21"E	239° (244,6°)	5,0 NM	-	A4500+	-	RNP 1
TF	SAGAN	NO	49°09'11,45"N 018°21'21,59"E	329° (334,5°)	5,0 NM	RIGHT	A4500+	K150-	RNP 1

RNP 1 STAR Coding Table: VADEX 3B									
Path Terminator	Waypoint			Course / Track MAG (True)	DIST	Turn Direction	Constraints		Navigation Specification
	Identifier	Flyover	Coordinates				Level	Speed	
IF	VADEX	NO	49°15'03,01"N 018°53'05,32"E	-	-	-	A10000+	-	RNP 1
TF	ZI614	NO	49°12'37,02"N 018°50'11,88"E	213° (217,9°)	3,1 NM	-	A10000+	-	RNP 1
TF	ZI613	NO	49°10'15,60"N 018°42'33,61"E	240° (244,8°)	5,5 NM	RIGHT	A10000+	-	RNP 1
TF	ZI612	NO	49°06'49,67"N 018°31'30,43"E	239° (244,7°)	8,0 NM	-	A5000+	-	RNP 1
TF	ZI611	NO	49°04'40,90"N 018°24'38,21"E	239° (244,6°)	5,0 NM	-	A4500+	-	RNP 1
TF	SAGAN	NO	49°09'11,45"N 018°21'21,59"E	329° (334,5°)	5,0 NM	RIGHT	A4500+	K150-	RNP 1

RNAV Holding							
Holding Point	Inbound Track MAG (True)	Turn Direction	MAX IAS	Minimum Holding Altitude	Time	DIST MAHF	Remarks
SAGAN	059° (064,4°)	LEFT	-	A4500	1 MIN	-	-