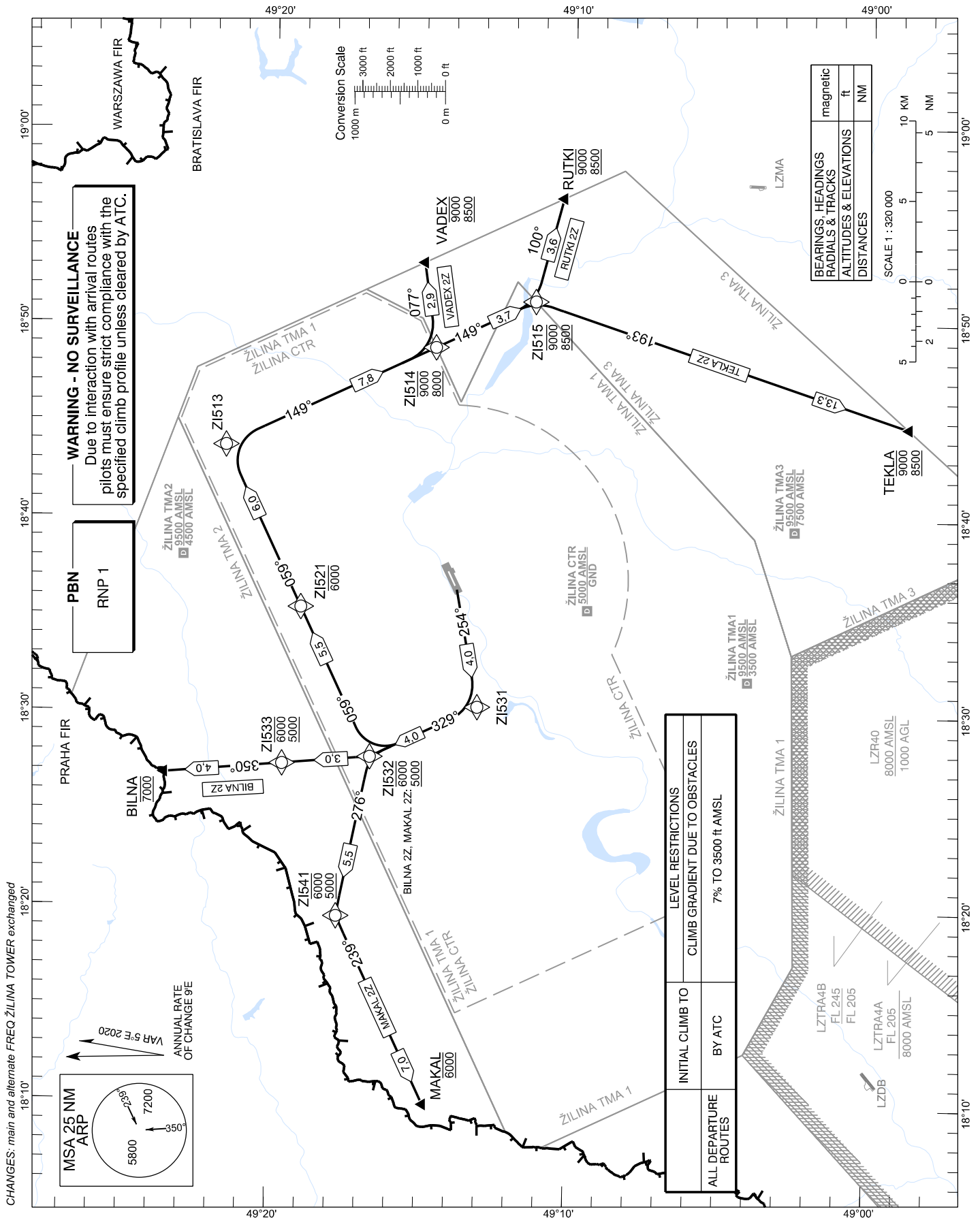


STANDARD DEPARTURE CHART -
INSTRUMENT (SID) - ICAO

TRANSITION ALTITUDE
10 000 ft

ŽILINA TOWER 124,150 (118,400)

ŽILINA (LZZI)
RNP 1 SID RWY 24
ACFT CAT A/B



Designator	Route	After Take-Off		Remarks					
		INITIAL CLIMB TO	Expect FREQ						
BILNA 2Z	Climb on track 254° to ZI531 – ZI532 – ZI533 – BILNA	BY ATC	ŽILINA TOWER 124,150 MHz	Climb gradient at least 7,0% until passing 3 500 FT AMSL, thereafter 3,3%.					
RNP 1 SID Coding Table: BILNA 2Z									
Path Terminator	Waypoint			Course / Track MAG (True)	DIST	Turn Direction	Constraints		Navigation Specification
	Identifier	Flyover	Coordinates				Level	Speed	
CF	ZI531	NO	49°13'08,42"N 018°30'20,37"E	254° (259,7°)	4,0 NM	-	-	-	RNP 1
TF	ZI532	NO	49°16'43,08"N 018°27'44,49"E	329° (334,6°)	4,0 NM	RIGHT	A6000- A5000+	-	RNP 1
TF	ZI533	NO	49°19'39,67"N 018°27'21,38"E	350° (355,1°)	3,0 NM	RIGHT	A6000- A5000+	-	RNP 1
TF	BILNA	NO	49°23'36,79"N 018°26'50,28"E	350° (355,1°)	4,0 NM	-	A7000	-	RNP 1

Designator	Route	After Take-Off		Remarks					
		INITIAL CLIMB TO	Expect FREQ						
MAKAL 2Z	Climb on track 254° to ZI531 – ZI532 – ZI541 – MAKAL	BY ATC	ŽILINA TOWER 124,150 MHz	Climb gradient at least 7,0% until passing 3 500 FT AMSL, thereafter 3,3%.					
RNP 1 SID Coding Table: MAKAL 2Z									
Path Terminator	Waypoint			Course / Track MAG (True)	DIST	Turn Direction	Constraints		Navigation Specification
	Identifier	Flyover	Coordinates				Level	Speed	
CF	ZI531	NO	49°13'08,42"N 018°30'20,37"E	254° (259,7°)	4,0 NM	-	-	-	RNP 1
TF	ZI532	NO	49°16'43,08"N 018°27'44,49"E	329° (334,6°)	4,0 NM	RIGHT	A6000- A5000+	-	RNP 1
TF	ZI541	NO	49°17'46,58"N 018°19'33,60"E	276° (281,2°)	5,5 NM	LEFT	A6000- A5000+	-	RNP 1
TF	MAKAL	NO	49°14'45,63"N 018°09'56,58"E	239° (244,5°)	7,0 NM	LEFT	A6000	-	RNP 1

Designator	Route	After Take-Off		Remarks
		INITIAL CLIMB TO	Expect FREQ	
VADEX 2Z	Climb on track 254° to ZI531 – ZI532 – ZI521 – ZI513 – ZI514 - VADEX	BY ATC	ŽILINA TOWER 124,150 MHz	Climb gradient at least 7,0% until passing 3 500 FT AMSL, thereafter 3,3%.

RNP 1 SID Coding Table: VADEX 2Z

Path Terminator	Waypoint			Course / Track MAG (True)	DIST	Turn Direction	Constraints		Navigation Specification
	Identifier	Flyover	Coordinates				Level	Speed	
CF	ZI531	NO	49°13'08,42"N 018°30'20,37"E	254° (259,7°)	4,0 NM	-	-	-	RNP 1
TF	ZI532	NO	49°16'43,08"N 018°27'44,49"E	329° (334,6°)	4,0 NM	RIGHT	-	-	RNP 1
TF	ZI521	NO	49°19'05,74"N 018°35'23,97"E	059° (064,6°)	5,5 NM	RIGHT	A6000-	-	RNP 1
TF	ZI513	NO	49°21'39,43"N 018°43'41,65"E	059° (064,7°)	6,0 NM	-	-	-	RNP 1
TF	ZI514	NO	49°14'38,76"N 018°48'44,52"E	149° (154,8°)	7,8 NM	RIGHT	A9000- A8000+	-	RNP 1
TF	VADEX	NO	49°15'03,01"N 018°53'05,32"E	077° (081,9°)	2,9 NM	LEFT	A9000- A8500+	-	RNP 1

Designator	Route	After Take-Off		Remarks
		INITIAL CLIMB TO	Expect FREQ	
RUTKI 2Z	Climb on track 254° to ZI531 – ZI532 – ZI521 – ZI513 – ZI514 – ZI515 - RUTKI	BY ATC	ŽILINA TOWER 124,150 MHz	Climb gradient at least 7,0% until passing 3 500 FT AMSL, thereafter 3,3%.

RNP 1 SID Coding Table: RUTKI 2Z

Path Terminator	Waypoint			Course / Track MAG (True)	DIST	Turn Direction	Constraints		Navigation Specification
	Identifier	Flyover	Coordinates				Level	Speed	
CF	ZI531	NO	49°13'08,42"N 018°30'20,37"E	254° (259,7°)	4,0 NM	-	-	-	RNP 1
TF	ZI532	NO	49°16'43,08"N 018°27'44,49"E	329° (334,6°)	4,0 NM	RIGHT	-	-	RNP 1
TF	ZI521	NO	49°19'05,74"N 018°35'23,97"E	059° (064,6°)	5,5 NM	RIGHT	A6000-	-	RNP 1
TF	ZI513	NO	49°21'39,43"N 018°43'41,65"E	059° (064,7°)	6,0 NM	-	-	-	RNP 1
TF	ZI514	NO	49°14'38,76"N 018°48'44,52"E	149° (154,8°)	7,8 NM	RIGHT	A9000- A8000+	-	RNP 1
TF	ZI515	NO	49°11'19,09"N 018°51'07,73"E	149° (154,8°)	3,7 NM	-	A9000- A8500+	-	RNP 1
TF	RUTKI	NO	49°10'23,87"N 018°56'24,33"E	100° (104,9°)	3,6 NM	LEFT	A9000- A8500+	-	RNP 1

Designator	Route	After Take-Off		Remarks
		INITIAL CLIMB TO	Expect FREQ	
TEKLA 2Z	Climb on track 254° to ZI531 – ZI532 – ZI521 – ZI513 – ZI514 – ZI515 - TEKLA	BY ATC	ŽILINA TOWER 124,150 MHz	Climb gradient at least 7,0% until passing 3 500 FT AMSL, thereafter 3,3%.

RNP 1 SID Coding Table: TEKLA 2Z

Path Terminator	Waypoint			Course / Track MAG (True)	DIST	Turn Direction	Constraints		Navigation Specification
	Identifier	Flyover	Coordinates				Level	Speed	
CF	ZI531	NO	49°13'08,42"N 018°30'20,37"E	254° (259,7°)	4,0 NM	-	-	-	RNP 1
TF	ZI532	NO	49°16'43,08"N 018°27'44,49"E	329° (334,6°)	4,0 NM	RIGHT	-	-	RNP 1
TF	ZI521	NO	49°19'05,74"N 018°35'23,97"E	059° (064,6°)	5,5 NM	RIGHT	A6000-	-	RNP 1
TF	ZI513	NO	49°21'39,43"N 018°43'41,65"E	059° (064,7°)	6,0 NM	-	-	-	RNP 1
TF	ZI514	NO	49°14'38,76"N 018°48'44,52"E	149° (154,8°)	7,8 NM	RIGHT	A9000- A8000+	-	RNP 1
TF	ZI515	NO	49°11'19,09"N 018°51'07,73"E	149° (154,8°)	3,7 NM	-	A9000- A8500+	-	RNP 1
TF	TEKLA	NO	48°58'45,84"N 018°44'43,15"E	193° (198,6°)	13,3 NM	RIGHT	A9000- A8500+	-	RNP 1

ASC 7 % - 425 ft/NM

Ground speed (kt)	75	100	150	200	250	300
Vertical speed (ft/min)	532	709	1063	1418	1772	2127