

INSTRUMENT
APPROACH
CHART - ICAO

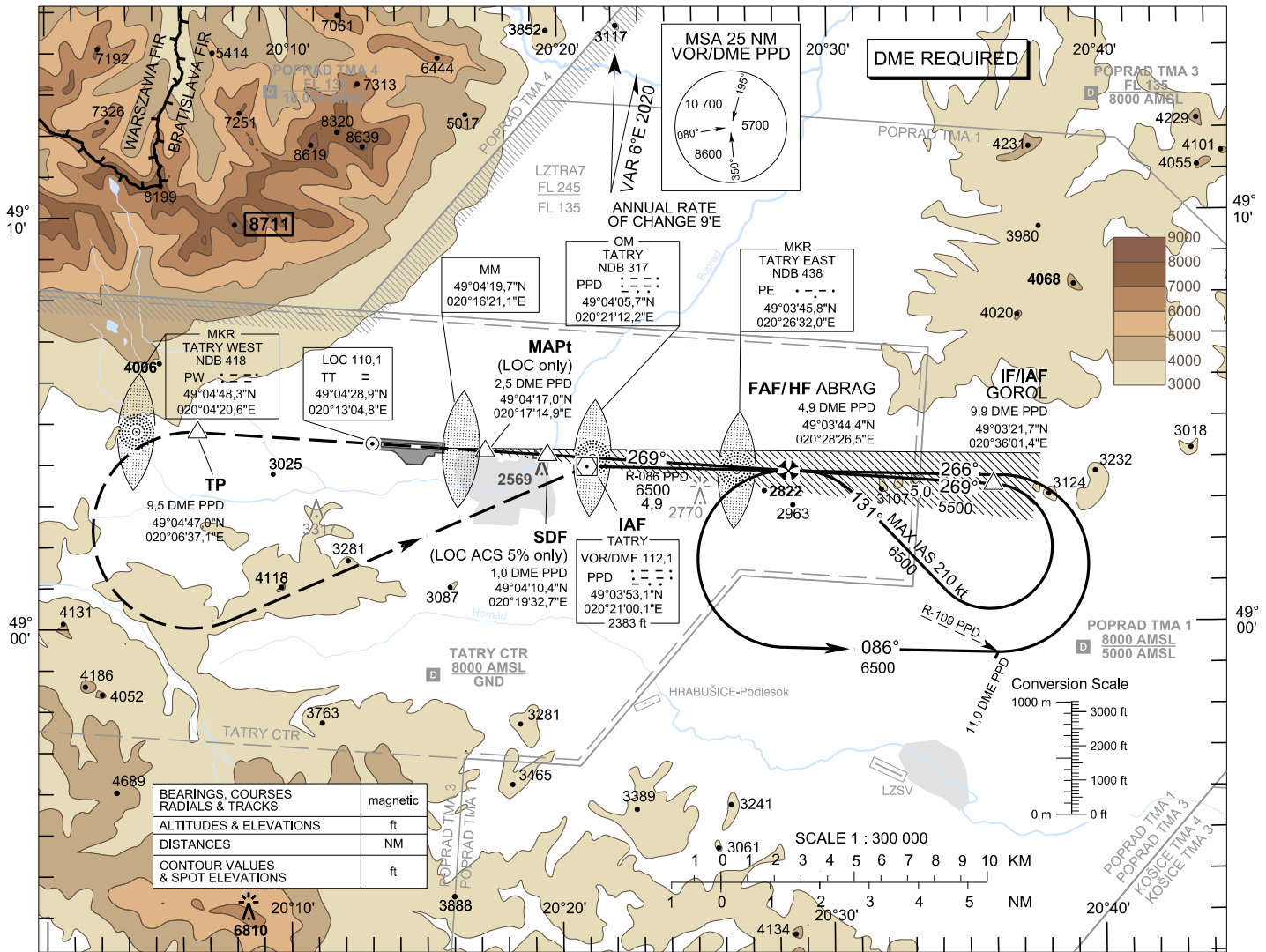
TRANSITION ALTITUDE
10 000 ft

AD ELEV 2356 - 83 hPa
THR RWY 27 ELEV 2278,5 - 81 hPa

TATRY TOWER 121,350 (118,950)
(118,625)

POPRADE TATRY ATIS 133,130

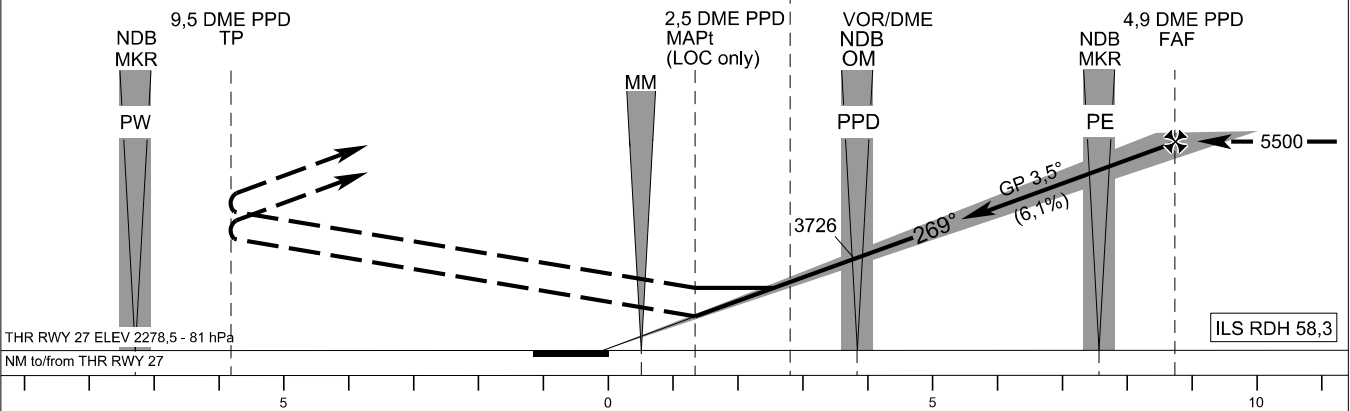
POPRADE-Tatry (LZTT)
ILS CAT I or LOC RWY 27
ACFT CAT A/B/C/D



MISSED APPROACH

Climb to TP (9,5 DME PPD), turn left to VOR PPD, intercept R-086 VOR PPD (track 086°) to join the hold at ABRAG (R-086 VOR PPD / 4,9 DME PPD), climbing to 6500 AMSL. MAX IAS 185 kt until established on track to VOR PPD.

1,0 DME PPD
SDF
(LOC ASC 5% only)



OCA (OCH)		ASC	A	B	C	D
Straight-in Approach	CAT I	2,5% ft	3113 (835)	3127 (849)	3137 (859)	3150 (872)
		5,0% ft	2445 (167)	2455 (177)	2465 (187)	2478 (200)
	LOC without SDF	2,5% ft		3260 (982)		
		5,0% ft		3170 (892)		
Circling (* see Note)		ft	3350 (994)	3680 (1324)	4620 (2264)	

*Note: Not authorized NORTH of the EXT D RCL

DME PPD	NM	3,0	2,0	1,0	DME PPD	1,0
ALTITUDES	ft	4795	4421	4045	3726	3320

Ground speed	kt	70	90	100	120	140	160	180
FAF - MAPt (7,4 NM)	min:sec	6:20	4:55	4:26	3:41	3:10	2:46	2:28
Rate of descent (6,1%)	ft/min	434	557	619	743	867	991	1115

Timing not authorized for defining the MAPt

CHANGES: new AD HRABUŠICE-Podlesok established; revision of critical obstacles