

**INSTRUMENT
APPROACH
CHART - ICAO**

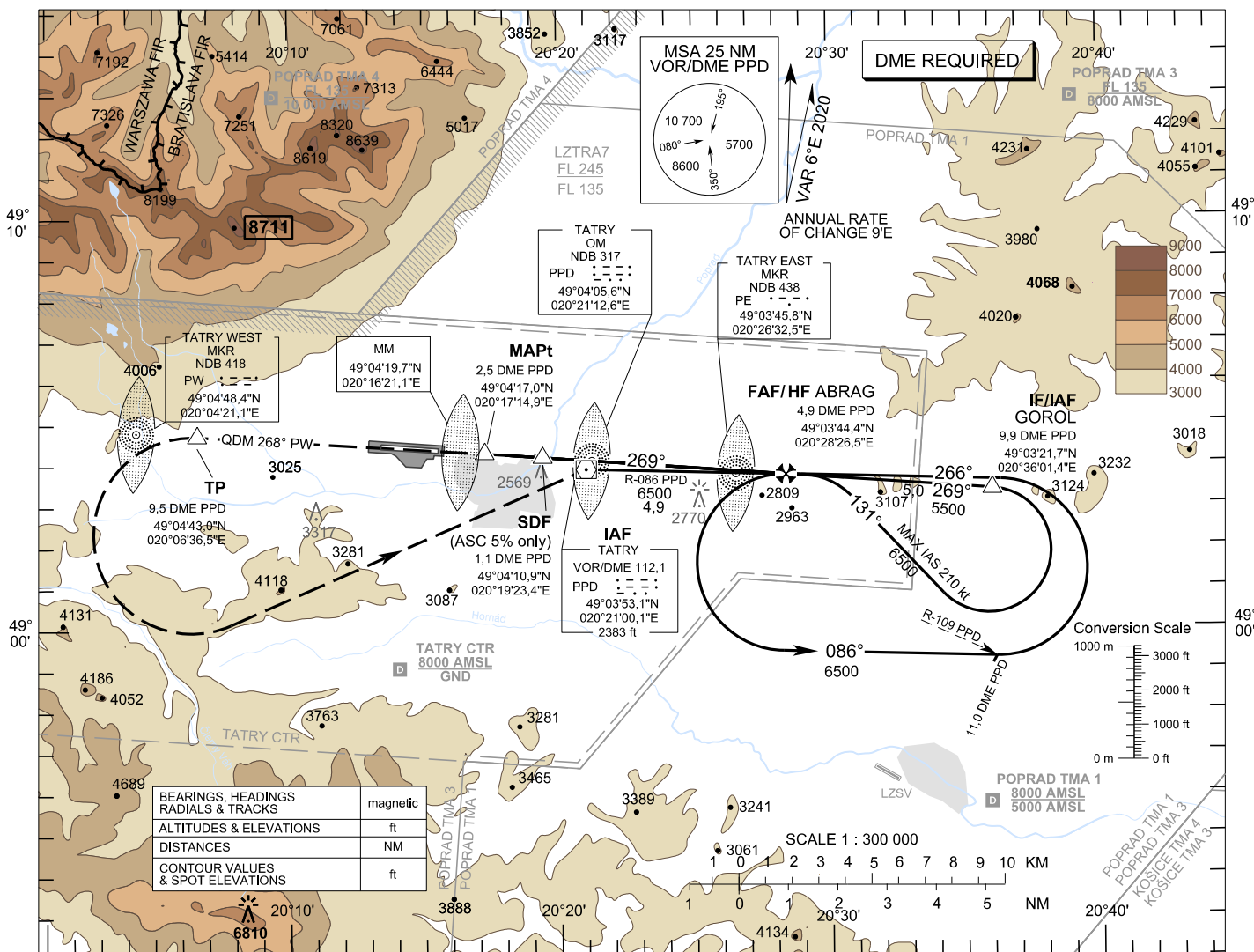
TRANSITION ALTITUDE
10 000 ft

AD ELEV 2356 - 83 hPa
THR RWY 27 ELEV 2278 - 81 hPa

TATRY TOWER 121,350 (118,950)
(118,625)

POP RAD TATRY ATIS 133,130

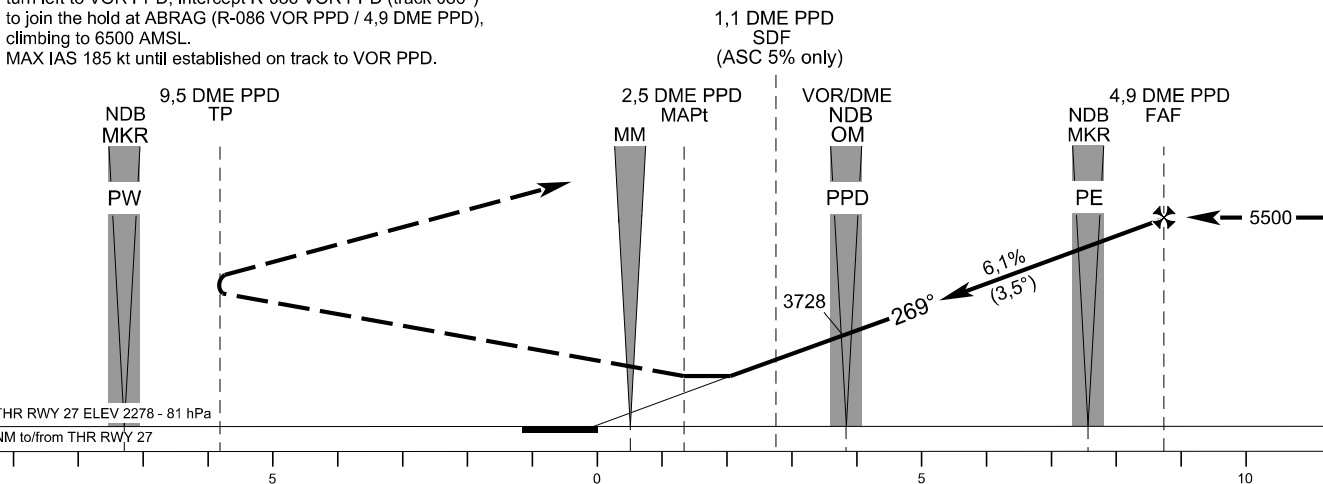
**POP RAD-Tatry (LZTT)
NDB RWY 27
ACFT CAT A/B/C/D**



BEARINGS, HEADINGS RADIALS & TRACKS	magnetic
ALTITUDES & ELEVATIONS	ft
DISTANCES	NM
CONTOUR VALUES & SPOT ELEVATIONS	ft

MISSED APPROACH

Climb on QDM 268° PW to TP (9.5 DME PPD), turn left to VOR PPD, intercept R-086 VOR PPD (track 086°) to join the hold at ABRAG (R-086 VOR PPD / 4.9 DME PPD), climbing to 6500 AMSL.
MAX IAS 185 kt until established on track to VOR PPD.



OCA (OCH)	ASC	A	B	C	D
Straight-In Approach	without SDF	3210 (932)			
	with SDF	3170 (892)			
Circling (* see Note)	5,0%	2760 (482)			
	ft	3350 (994)	3680 (1324)	4620 (2264)	

*Note: Not authorized NORTH of the EXT D RCL

DME PPD	NM	3,0	2,0	1,0	DME PPD	1,0
ALTITUDES	ft	4795	4421	4045	3728	3320

Ground speed	kt	70	90	100	120	140	160	180
FAF - MAPt (7,4 NM)	min:sec	6:20	4:55	4:26	3:41	3:10	2:46	2:28
Rate of descent (6,1%)	ft/min	434	557	619	743	867	991	1115

Timing not authorized for defining the MAPt