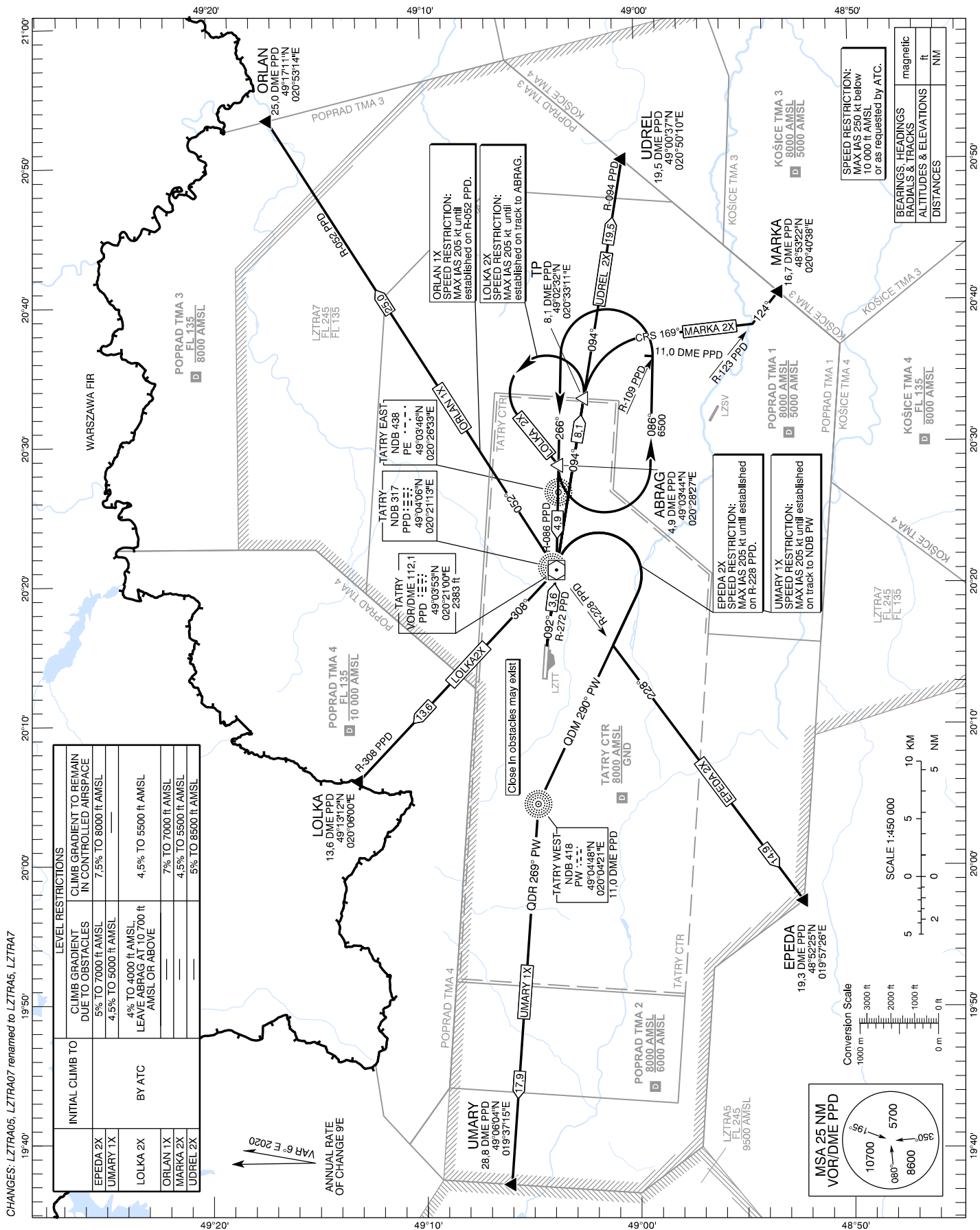


STANDARD DEPARTURE CHART -  
INSTRUMENT (SID) - ICAO

TRANSITION ALTITUDE 10 000 ft	TATRY TOWER 121,350 (118,950) (118,625)
	POPRAD TATRY ATIS 133,130

POPRAD-Tatry (LZTT)  
**SID RWY 09**  
ACFT CAT A/B/C/D



CHANGES: LZTRA05, LZTRA07 returned to LZTRA05, LZTRA07