

INSTRUMENT
APPROACH
CHART - ICAO

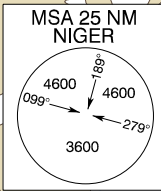
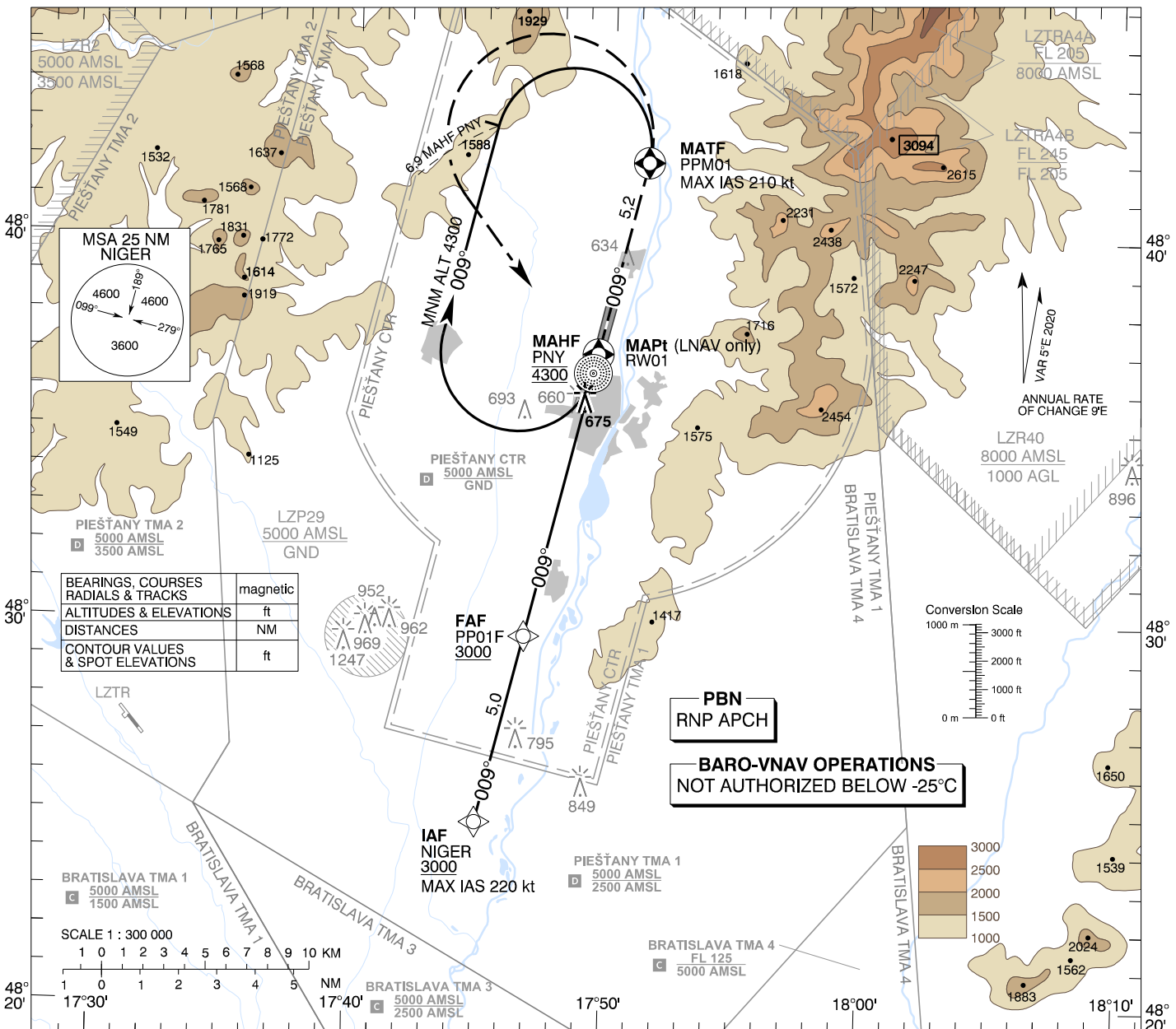
TRANSITION ALTITUDE
10 000 ft
AD ELEV 545 - 20 hPa
THR RWY 01 ELEV 536,0 - 19 hPa

PIEŠŤANY TOWER 118,575 (118,45)

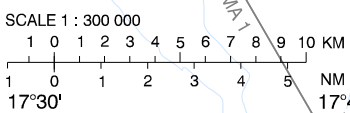
EGNOS
CH 41183
E01A

PIEŠŤANY (LZPP)
RNP RWY 01
ACFT CAT A/B/C

17°30' 17°40' 17°50' 18°00' 18°10'

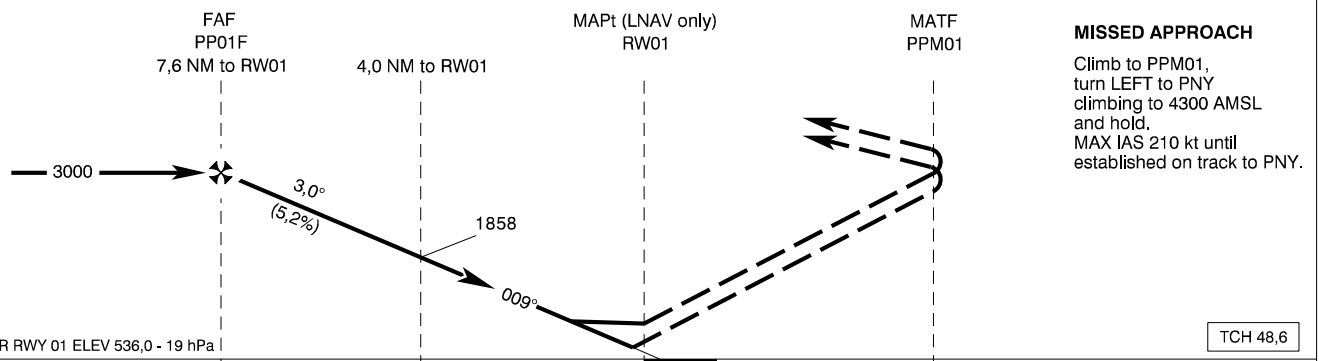
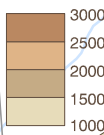
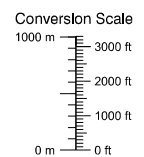


| | |
|---------------------------------------|----------|
| BEARINGS, COURSES RADIALS & TRACKS | magnetic |
| ALTITUDES & ELEVATIONS | ft |
| DISTANCES | NM |
| CONTOUR VALUES & SPOT ELEVATIONS | ft |



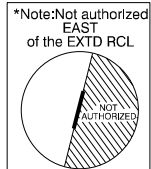
PBN
RNP APCH

BARO-VNAV OPERATIONS
NOT AUTHORIZED BELOW -25°C



THR RWY 01 ELEV 536,0 - 19 hPa
NM to/from THR RWY 01

| OCA (OCH) | | ASC | A | B | C |
|-----------------------|-----------|---------|------------|------------|------------|
| Straight-in Approach | LNAV | 2,5% ft | | 1060 (524) | |
| | | 3,0% ft | | 930 (394) | |
| | LNAV/VNAV | 2,5% ft | 966 (430) | 978 (442) | 986 (450) |
| | | 3,0% ft | 799 (263) | 811 (275) | 819 (283) |
| | LPV | 2,5% ft | 879 (343) | 891 (355) | 899 (363) |
| | | 3,0% ft | 754 (218) | 766 (230) | 774 (238) |
| Circling (* see Note) | | ft | 1020 (475) | 1040 (495) | 1420 (875) |



| Dist RW01 (THR) NM | 7,0 | 6,0 | 5,0 | 4,0 | 3,0 | 2,0 |
|--------------------|------|------|------|------|------|------|
| ALTITUDES ft | 2814 | 2495 | 2177 | 1858 | 1540 | 1221 |

| Ground speed kt | 70 | 90 | 100 | 120 | 140 | 160 |
|-------------------------------|------|------|------|------|------|------|
| PP01F - RW01 (7,6 NM) min:sec | 6:30 | 5:03 | 4:33 | 3:48 | 3:15 | 2:51 |
| Rate of descent (5,2%) ft/min | 372 | 478 | 531 | 637 | 743 | 849 |

Timing not authorized for defining the MAPt

CHANGES: speed limit to IAF NIGER and MATF added; note about availability removed

Instrument Approach Procedure Coding Table: Piešťany RNP RWY 01

| Path Terminator | Waypoint | | | | Course / Track MAG (True) | DIST | Turn Direction | Constraints | | Navigation Specification |
|-----------------|------------|------|---------|---------------------------------|------------------------------|--------|----------------|-------------|-------|--------------------------|
| | Identifier | Type | Flyover | Coordinates | | | | Level | Speed | |
| IF | NIGER | IAF | NO | 48°24'45,50"N 017°45'04,35"E | - | - | - | A3000+ | K220- | RNP APCH |
| TF | PP01F | FAF | NO | 48°29'36,93"N 017°46'50,18"E | 009° (013,6°) | 5,0 NM | - | A3000+ | - | RNP APCH |
| TF | RW01 | MAPt | YES | 48°36'58,98"N 017°49'31,38"E | 009° (013,6°) | 7,6 NM | - | - | - | RNP APCH |
| TF | PPM01 | MATF | YES | 48°41'59,28"N 017°51'21,35"E | 009° (013,6°) | 5,2 NM | - | - | K210- | RNP APCH |
| DF | PNY | MAHF | YES | 48°36'29,25"N 017°49'20,11"E | - | - | LEFT | A4300 | - | RNP APCH |

RNAV Holding

| Holding Point | Inbound Track MAG (True) | Turn Direction | MAX IAS | Minimum Holding Altitude | Time | DIST MAHF | Remarks |
|---------------|-----------------------------|----------------|---------|-----------------------------|------|-----------|---------|
| PNY | 189° (193,7°) | RIGHT | - | A4300 | - | 6,9 NM | - |

**SBAS FAS Data Block Coding Table
Piešťany RNP RWY 01**

Input data

| | |
|-------------------------------------|---------------|
| Operation Type | 0 |
| SBAS Provider | 1 |
| Airport Identifier | LZPP |
| Runway | 01 |
| Runway Direction | 0 |
| Approach Performance Designator | 0 |
| Route Indicator | |
| Reference Path Data Selector | 0 |
| Reference Path Identifier | E01A |
| LTP/FTP Latitude | 483658.9835N |
| LTP/FTP Longitude | 0174931.3835E |
| LTP/FTP Ellipsoidal Height (metres) | 206.7 |
| FPAP Latitude | 483801.8425N |
| Delta FPAP Latitude (seconds) | 62.8590 |
| FPAP Longitude | 0174954.3790E |
| Delta FPAP Longitude (seconds) | 22.9955 |
| Threshold Crossing Height | 14.8 |
| TCH Units Selector | 1 |
| Glidepath Angle (degrees) | 3.00 |
| Course Width (metres) | 105.00 |
| Length Offset (metres) | 0 |
| HAL (metres) | 40.0 |
| VAL (metres) | 35.0 |

Output data

| | |
|----------------------|--|
| Data Block | 10 10 10 1A 0C 01 00 00 01 31 30 05 CF 27 DD 14 EF 5A A6 07 13 1C 16 EB 01 A7 B3 00 28 81 2C 01 64 00 C8 AF AB 79 CF 67 |
| Calculated CRC Value | AB79CF67 |

Required Additional Data

| | |
|-------------------------------------|-------|
| ICAO Code | LZ |
| LTP/FTP Orthometric Height (metres) | 163.4 |
| FPAP Orthometric Height (metres) | 163.4 |