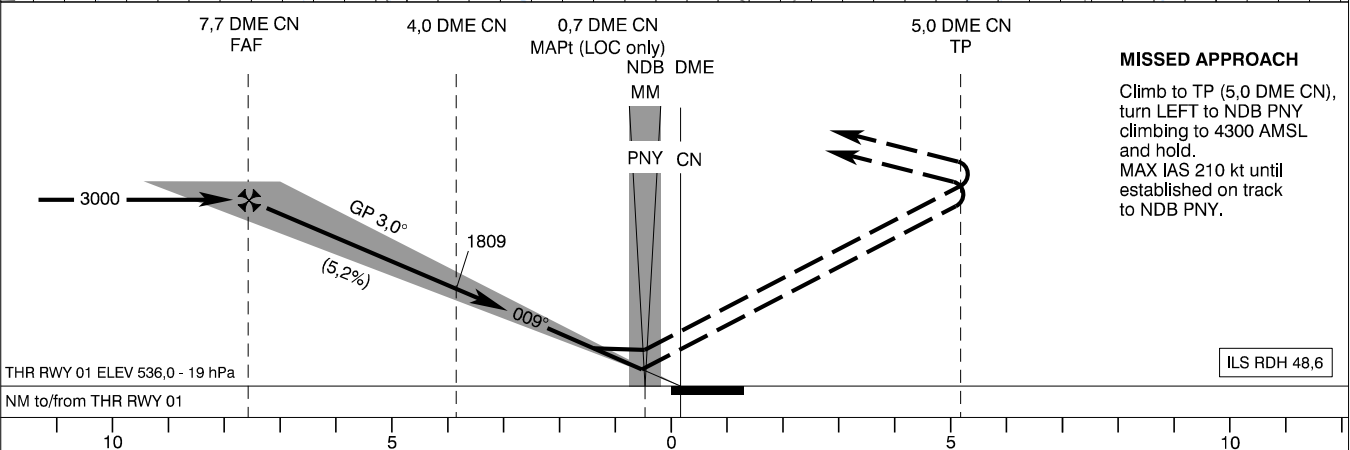
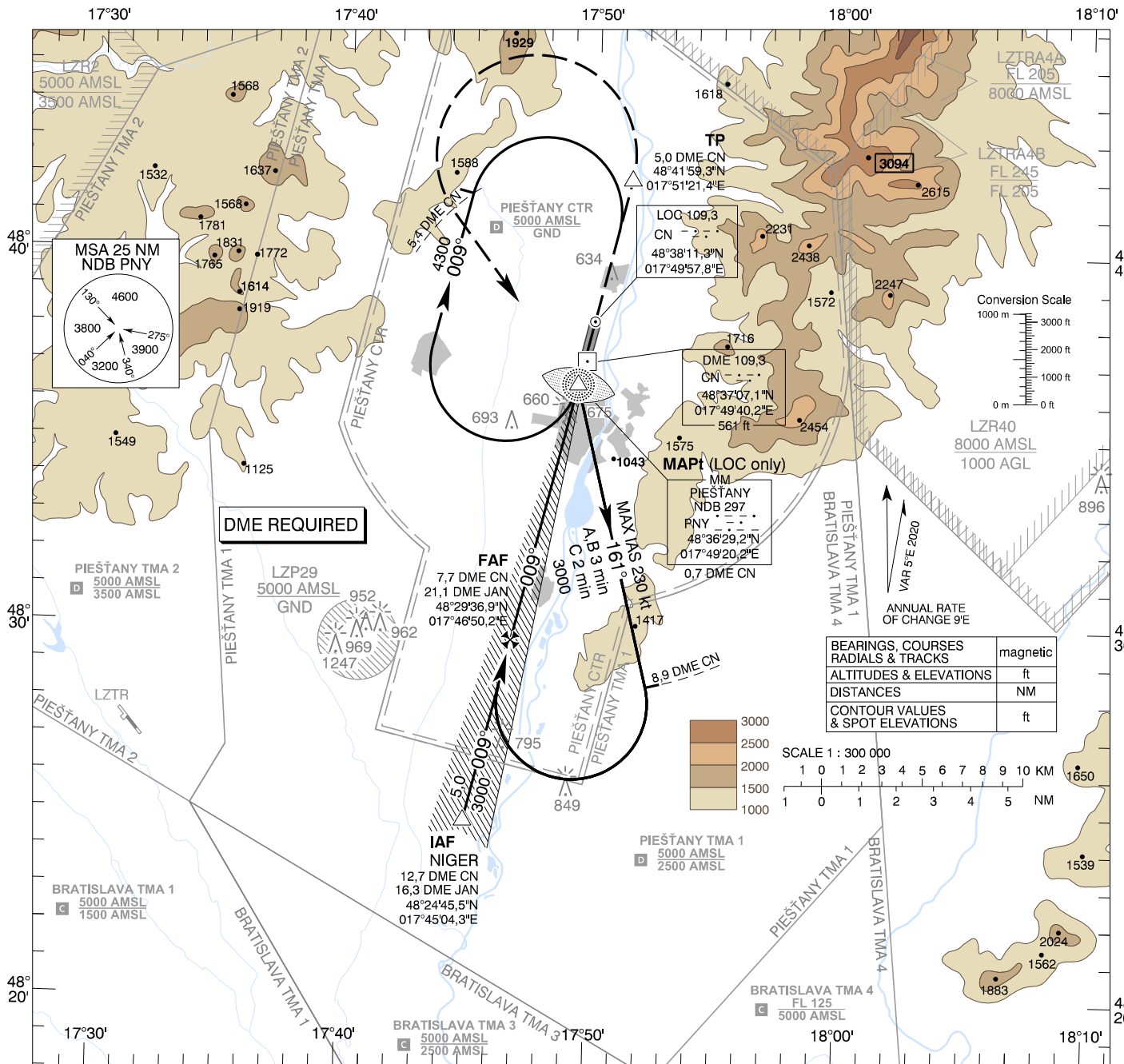


**INSTRUMENT
APPROACH
CHART - ICAO**

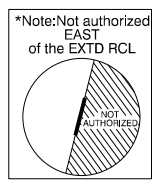
TRANSITION ALTITUDE
10 000 ft
AD ELEV 545 - 20 hPa
THR RWY 01 ELEV 536,0 - 19 hPa

PIEŠŤANY TOWER 118,575 (118,45)

**PIEŠŤANY (LZPP)
ILS CAT I or LOC RWY 01
ACFT CAT A/B/C**



OCA (OCH)	ASC	A	B	C
Straight-in Approach	CAT	2,5% ft 917 (381)	929 (393)	937 (401)
	LOC	3,0% ft 754 (218)	766 (230)	774 (238)
Circling (* see Note)		2,5% ft 940 (404)	940 (404)	940 (404)
		ft 1020 (475)	1040 (495)	1420 (875)



DME CN	NM	7,0	6,0	5,0	4,0	3,0	2,0
ALTITUDES	ft	2764	2446	2128	1809	1491	1172
Ground speed	kt	70	90	100	120	140	160
FAF - MAPt (7,1 NM)	min:sec	6:04	4:43	4:15	3:32	3:02	2:39
Rate of descent (5,2%)	ft/min	372	478	531	637	743	849

Timing not authorized for defining the MAPt

CHANGES: new IAF NIGER, IAF VAPRT, XENDI, ASLOT removed; NDB PNY renamed