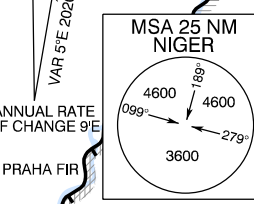
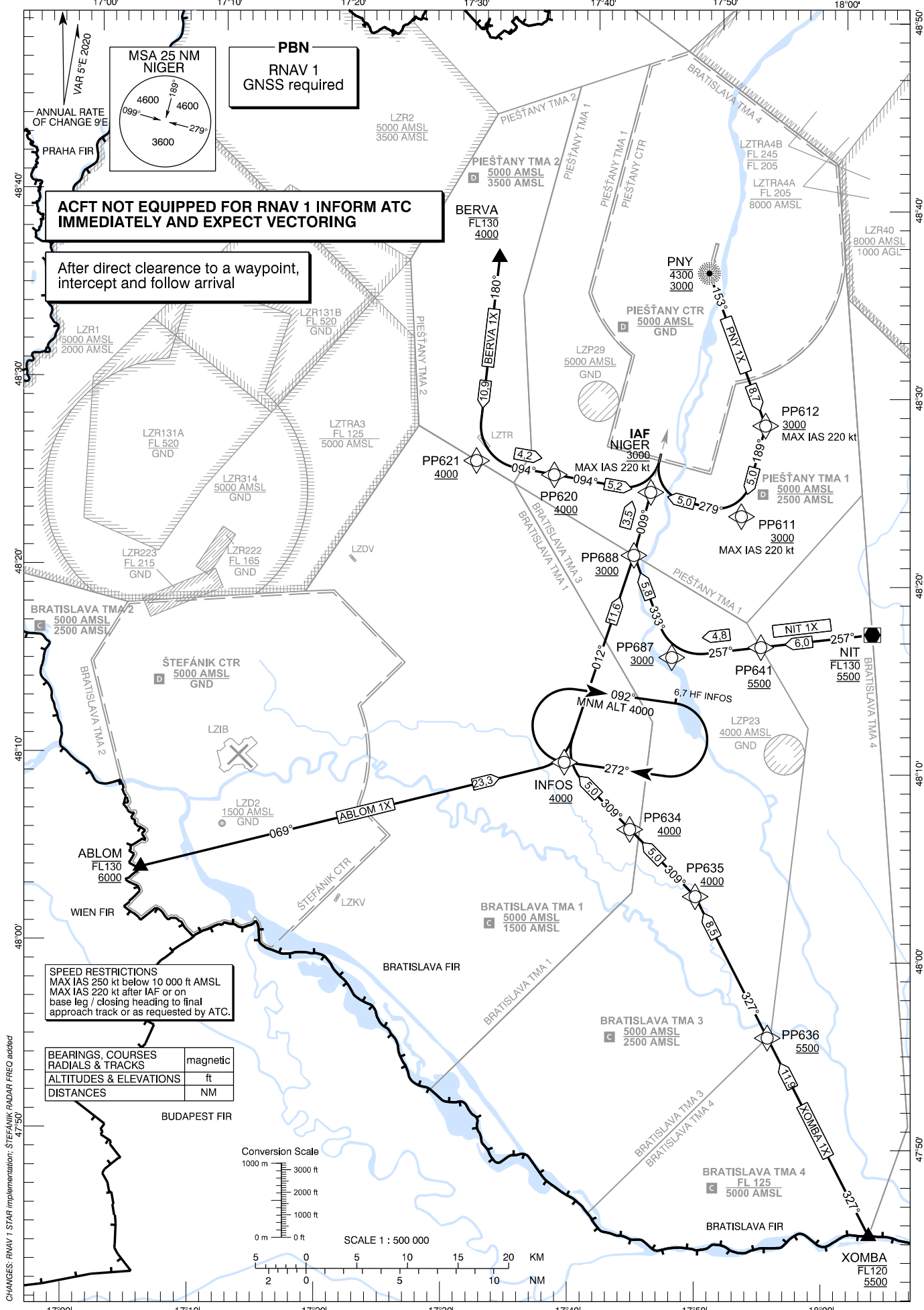


STANDARD ARRIVAL CHART -  
INSTRUMENT ( STAR ) - ICAO

TRANSITION ALTITUDE  
10 000 ft

ŠTEFÁNIK RADAR 134,925 (118,975)  
PIEŠŤANY TOWER 118,575 (118,450)

PIEŠŤANY (LZPP)  
RNAV 1 STAR RWY 01  
ACFT CAT A/B/C

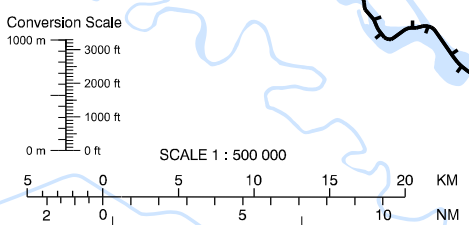


**ACFT NOT EQUIPPED FOR RNAV 1 INFORM ATC IMMEDIATELY AND EXPECT VECTORING**

After direct clearance to a waypoint, intercept and follow arrival

**SPEED RESTRICTIONS**  
MAX IAS 250 kt below 10 000 ft AMSL  
MAX IAS 220 kt after IAF or on base leg / closing heading to final approach track or as requested by ATC.

BEARINGS, COURSES, RADIALS & TRACKS	magnetic
ALTITUDES & ELEVATIONS	ft
DISTANCES	NM



CHANGES: RNAV 1 STAR implementation; ŠTEFÁNIK RADAR FREQ added 47'50"

## RNAV 1 STAR Coding Table: BERVA 1X

Path Terminator	Waypoint			Course / Track MAG (True)	DIST	Turn Direction	Constraints		Navigation Specification
	Identifier	Flyover	Coordinates				Level	Speed	
IF	BERVA	NO	48°37'03,25"N 017°32'28,20"E	-	-	-	FL130- A4000+	-	RNAV 1
TF	PP621	NO	48°26'12,52"N 017°31'03,97"E	180° (184,9°)	10,9 NM	-	A4000+	-	RNAV 1
TF	PP620	NO	48°25'33,90"N 017°37'19,09"E	094° (098,8°)	4,2 NM	LEFT	A4000+	-	RNAV 1
TF	NIGER	NO	48°24'45,50"N 017°45'04,35"E	094° (098,8°)	5,2 NM	-	A3000+	K220-	RNAV 1

## RNAV 1 STAR Coding Table: PNY 1X / PIEŠŤANY 1X

Path Terminator	Waypoint			Course / Track MAG (True)	DIST	Turn Direction	Constraints		Navigation Specification
	Identifier	Flyover	Coordinates				Level	Speed	
IF	PNY	NO	48°36'29,25"N 017°49'20,11"E	-	-	-	A4300- A3000+	-	RNAV 1
TF	PP612	NO	48°28'26,24"N 017°54'08,44"E	153° (158,3°)	8,7 NM	-	A3000+	K220-	RNAV 1
TF	PP611	NO	48°23'34,93"N 017°52'21,95"E	189° (193,7°)	5,0 NM	RIGHT	A3000+	K220-	RNAV 1
TF	NIGER	NO	48°24'45,50"N 017°45'04,35"E	279° (283,7°)	5,0 NM	RIGHT	A3000+	K220-	RNAV 1

## RNAV 1 STAR Coding Table: NIT 1X / NITRA 1X

Path Terminator	Waypoint			Course / Track MAG (True)	DIST	Turn Direction	Constraints		Navigation Specification
	Identifier	Flyover	Coordinates				Level	Speed	
IF	NIT	NO	48°17'25,57"N 018°03'02,30"E	-	-	-	FL130- A5500+	-	RNAV 1
TF	PP641	NO	48°16'37,96"N 017°54'09,68"E	257° (262,4°)	6,0 NM	-	A5500+	-	RNAV 1
TF	PP687	NO	48°15'59,45"N 017°47'04,59"E	257° (262,3°)	4,8 NM	-	A3000+	-	RNAV 1
TF	PP688	NO	48°21'22,93"N 017°43'50,99"E	333° (338,3°)	5,8 NM	RIGHT	A3000+	-	RNAV 1
TF	NIGER	NO	48°24'45,50"N 017°45'04,35"E	009° (013,6°)	3,5 NM	RIGHT	A3000+	K220-	RNAV 1

RNAV 1 STAR Coding Table: XOMBA 1X									
Path Terminator	Waypoint			Course / Track MAG (True)	DIST	Turn Direction	Constraints		Navigation Specification
	Identifier	Flyover	Coordinates				Level	Speed	
IF	XOMBA	NO	47°45'23,85"N 018°03'43,06"E	-	-	-	FL120- A5500+	-	RNAV 1
TF	PP636	NO	47°55'50,83"N 017°55'22,69"E	327° (331,8°)	11,9 NM	-	A5500+	-	RNAV 1
TF	PP635	NO	48°03'17,25"N 017°49'24,04"E	327° (331,7°)	8,5 NM	-	A4000+	-	RNAV 1
TF	PP634	NO	48°06'46,80"N 017°44'04,04"E	309° (314,4°)	5,0 NM	LEFT	A4000+	-	RNAV 1
TF	INFOS	NO	48°10'16,10"N 017°38'43,31"E	309° (314,3°)	5,0 NM	-	A4000+	-	RNAV 1
TF	PP688	NO	48°21'22,93"N 017°43'50,99"E	012° (017,1°)	11,6 NM	RIGHT	A3000+	-	RNAV 1
TF	NIGER	NO	48°24'45,50"N 017°45'04,35"E	009° (013,6°)	3,5 NM	LEFT	A3000+	K220-	RNAV 1

RNAV 1 STAR Coding Table: ABLOM 1X									
Path Terminator	Waypoint			Course / Track MAG (True)	DIST	Turn Direction	Constraints		Navigation Specification
	Identifier	Flyover	Coordinates				Level	Speed	
IF	ABLOM	NO	48°04'03,24"N 017°05'15,73"E	-	-	-	FL130- A6000+	-	RNAV 1
TF	INFOS	NO	48°10'16,10"N 017°38'43,31"E	069° (074,3°)	23,3 NM	-	A4000+	-	RNAV 1
TF	PP688	NO	48°21'22,93"N 017°43'50,99"E	012° (017,1°)	11,6 NM	LEFT	A3000+	-	RNAV 1
TF	NIGER	NO	48°24'45,50"N 017°45'04,35"E	009° (013,6°)	3,5 NM	LEFT	A3000+	K220-	RNAV 1

RNAV Holding							
Holding Point	Inbound Track MAG (True)	Turn Direction	MAX IAS	Minimum Holding Altitude	Time	DIST HF	Remarks
INFOS	272° (276,5°)	RIGHT	-	A4000	-	6,7 NM	-