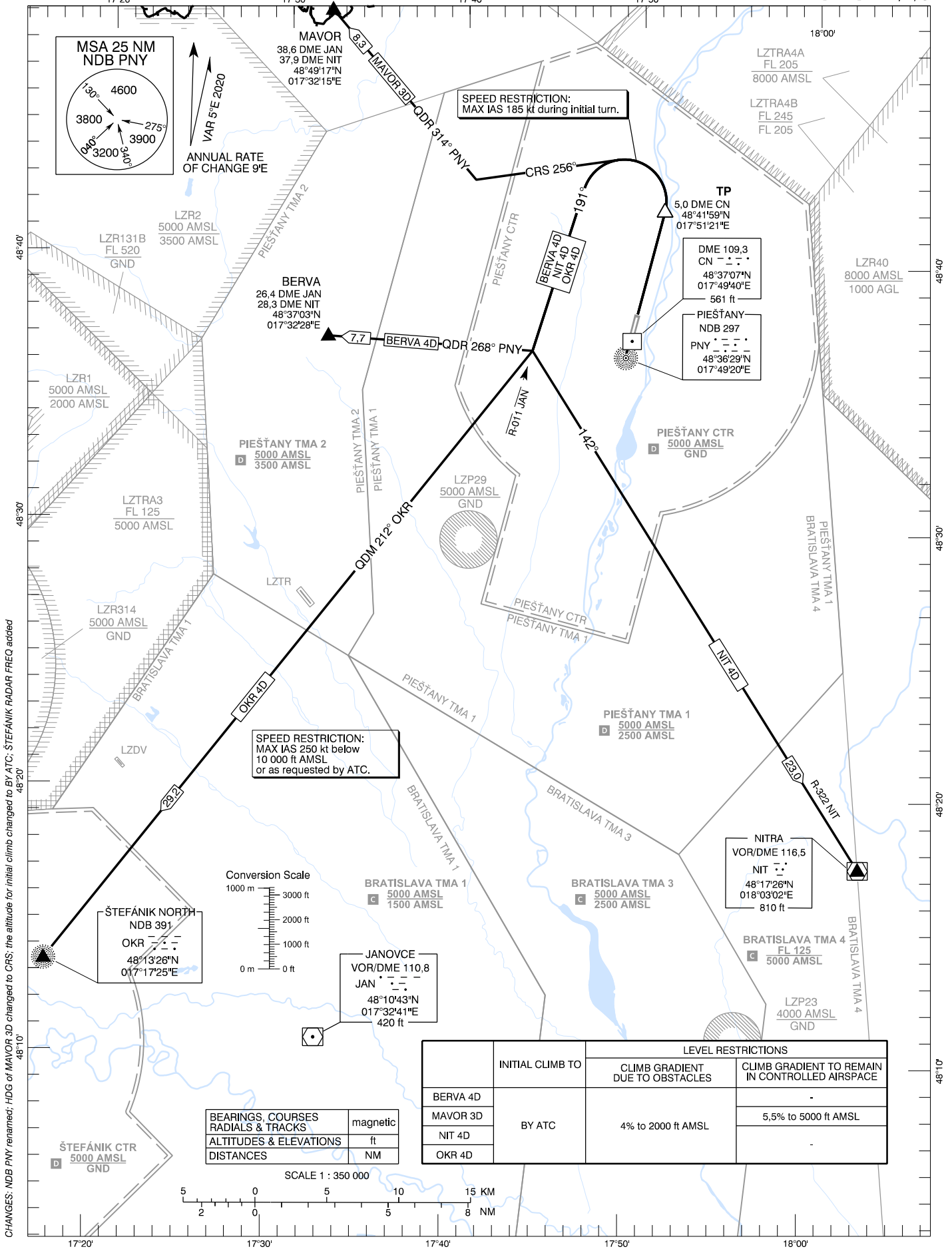


STANDARD DEPARTURE CHART -
INSTRUMENT (SID) - ICAO

TRANSITION ALTITUDE
10 000 ft

PIEŠŤANY TOWER 118,575 (118,450)
ŠTEFÁNIK RADAR 134,925 (118,975)

PIEŠŤANY (LZPP)
SID RWY 01
ACFT CAT A/B/C



CHANGES: NDB PNY renamed; HDG of MAVOR 3D changed to CRS; the altitude for initial climb changed to BY ATC; ŠTEFÁNIK RADAR FREQ added

BEARINGS, COURSES RADIALS & TRACKS	magnetic
ALTITUDES & ELEVATIONS	ft
DISTANCES	NM

	INITIAL CLIMB TO	LEVEL RESTRICTIONS	
		CLIMB GRADIENT DUE TO OBSTACLES	CLIMB GRADIENT TO REMAIN IN CONTROLLED AIRSPACE
BERVA 4D	BY ATC	4% to 2000 ft AMSL	-
MAVOR 3D			5,5% to 5000 ft AMSL
NIT 4D			-
OKR 4D			-