

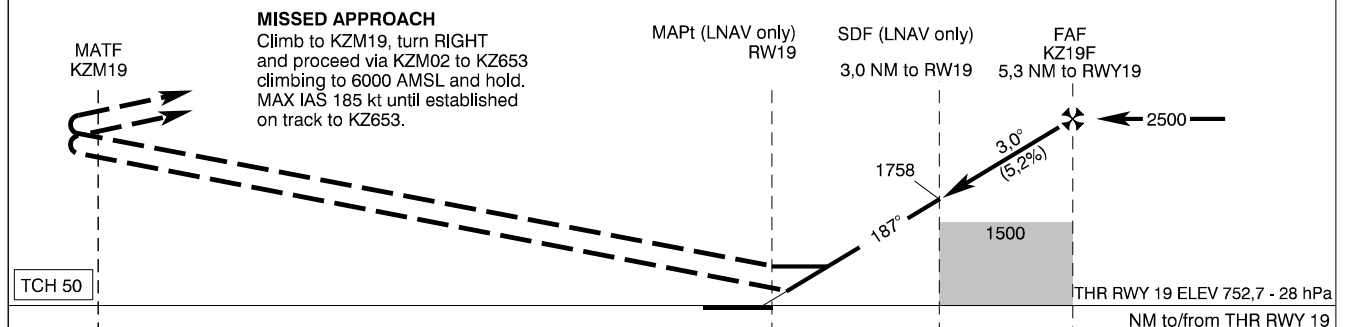
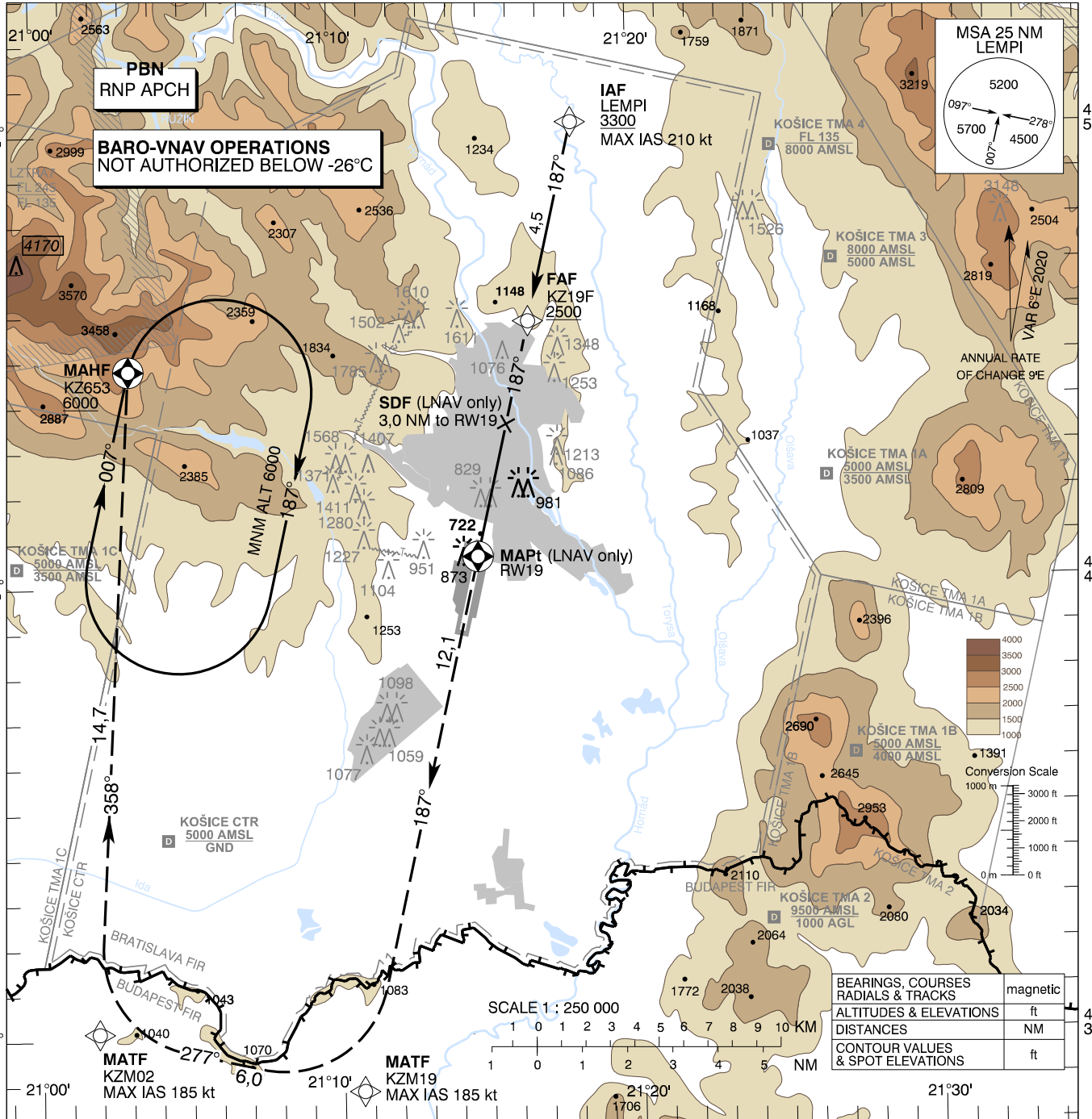
INSTRUMENT APPROACH CHART - ICAO

TRANSITION ALTITUDE 10 000 ft
AD ELEV 755 -28 hPa
THR RWY 19 ELEV 752,7 -28 hPa

KOŠICE RADAR 129,350 (119,850)
KOŠICE TOWER 120,400 (118,900)
KOŠICE ATIS 133,730

EGNOS
CH 65545
E19A

KOŠICE (LZKZ) RNP RWY 19 ACFT CAT A/B/C/D 21°30'



OCA (OCH)		A	B	C	D	Dist RWY19 (THR) NM	5,0	4,0	3,0	2,0	1,0				
Straight-in Approach	LNAV	1140 (385)				ALTITUDES	ft	2395	2076	1758	1440	1121			
	LNAV/VNAV	ft	1003 (251)	1015 (263)	1023 (271)	1034 (282)	Ground speed	kt	70	90	100	120	140	160	180
	LPV	ft	951 (198)	963 (210)	971 (218)	982 (229)	KZ19F - RWY19 (5,3 NM)	min:sec	4:34	3:33	3:12	2:40	2:17	2:00	1:47
Circling		ft	1420 (665)	1680 (925)	2040 (1285)	2430 (1675)	Rate of descent (5,2%)	ft/min	372	478	531	637	743	849	955
			Timing not authorized for defining the MAPt												

CHANGES: minimum holding altitude; text of missed approach; altitude restriction at KZ653; critical obstacles of procedure added; editorial

Instrument Approach Procedure Coding Table: Košice RNP RWY 19										
Path Terminator	Waypoint				Course / Track MAG (True)	DIST	Turn Direction	Constraints		Navigation Specification
	Identifier	Type	Flyover	Coordinates				Level	Speed	
IF	LEMPI	IAF	NO	48°50'10,08"N 021°18'06,77"E	-	-	-	A3300+	K210-	RNP APCH
TF	KZ19F	FAF	NO	48°45'47,29"N 021°16'34,39"E	187° (193,1°)	4,5 NM	-	A2500+	-	RNP APCH
TF	RW19	MAPt	YES	48°40'35,81"N 021°14'45,25"E	187° (193,1°)	5,3 NM	-	-	-	RNP APCH
TF	KZM19	MATF	NO	48°28'48,98"N 021°10'39,00"E	187° (193,0°)	12,1 NM	-	-	K185-	RNP APCH
TF	KZM02	MATF	NO	48°30'09,51"N 021°01'51,52"E	277° (283,0°)	6,0 NM	RIGHT	-	K185-	RNP APCH
TF	KZ653	MAHF	YES	48°44'47,42"N 021°03'09,92"E	358° (003,4°)	14,7 NM	RIGHT	A6000+	-	RNP APCH
RNAV Holding										
Holding Point	Inbound Track MAG (True)	Turn Direction		MAX IAS	Minimum Holding Altitude	Time	DIST MAHF	Remarks		
KZ653	007° (012,9°)	RIGHT		-	A6000	1 MIN	-	-		

SBAS FAS Data Block Coding Table Košice RNP RWY 19	
Input data	
Operation Type	0
SBAS Provider	1 (EGNOS)
Airport Identifier	LZKZ
Runway	19
Runway Letter	0 (None)
Approach Performance Designator	0
Route Indicator	
Reference Path Data Selector	0
Reference Path Identifier	E19A
LTP/FTP Latitude	484035.8065N
LTP/FTP Longitude	0211445.2485E
LTP/FTP Ellipsoidal Height (metres)	269.8
FPAP Latitude	483858.0125N
Delta FPAP Latitude (seconds)	-97.7940
FPAP Longitude	0211411.0615E
Delta FPAP Longitude (seconds)	-34.1870
Threshold Crossing Height	15.0
TCH Units Selector	1 (meters)
Glidepath Angle (degrees)	3.00
Course Width (metres)	105.00
Length Offset (metres)	0
HAL (metres)	40.0
VAL (metres)	35.0
Output data	
Data Block	10 1A 0B 1A 0C 13 00 00 01 39 31 05 BD C5 E3 14 01 25 1E 09 8A 1E FC 03 FD EA F4 FE 2C 81 2C 01 64 00 C8 AF 56 14 7E 48
Calculated CRC Value	56147E48
Required Additional Data	
ICAO Code	LZ
LTP/FTP Orthometric Height (metres)	229.4