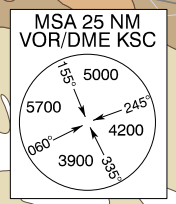
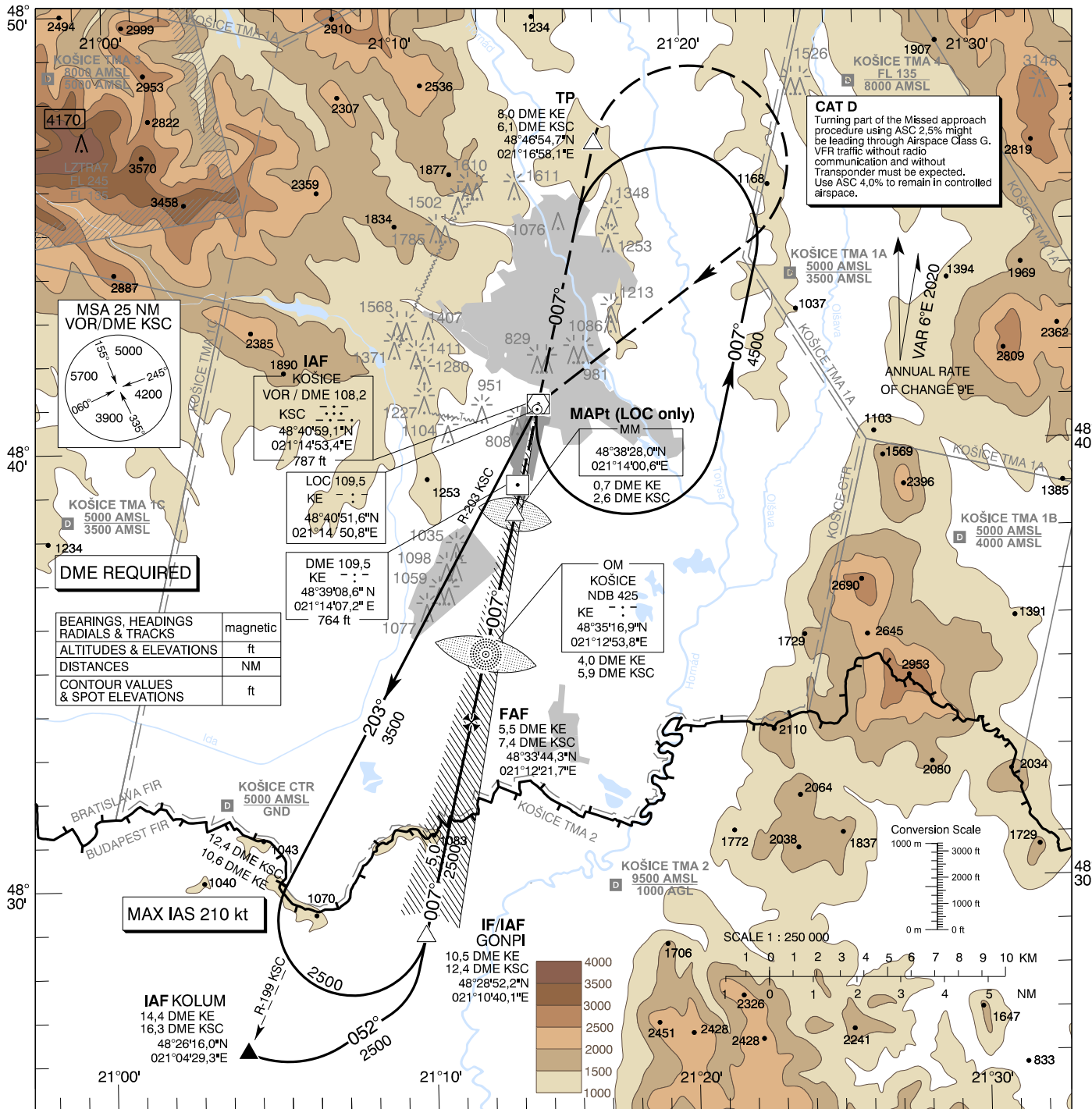


**INSTRUMENT  
APPROACH  
CHART - ICAO**

TRANSITION ALTITUDE  
10 000 ft  
AD ELEV 755 -28 hPa  
THR RWY 01 ELEV 738,4 -27 hPa

KOŠICE RADAR 129,350 (119,850)  
KOŠICE TOWER 120,400 (118,900)  
KOŠICE ATIS 133,730

**KOŠICE (LZKZ)  
ILS CAT I & II or LOC RWY 01  
ACFT CAT A/B/C/D**



**DME REQUIRED**

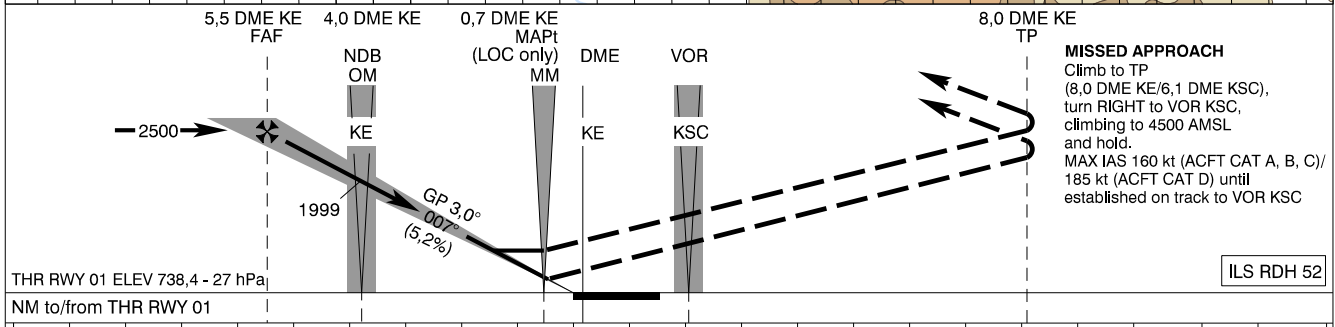
BEARINGS, HEADINGS	magnetic
RADIALS & TRACKS	
ALTITUDES & ELEVATIONS	ft
DISTANCES	NM
CONTOUR VALUES & SPOT ELEVATIONS	ft

**MAX IAS 210 kt**

**CAT D**  
Turning part of the Missed approach procedure using ASC 2.5% might be leading through Airspace Class G. VFR traffic without radio communication and without Transponder must be expected. Use ASC 4.0% to remain in controlled airspace.

**MISSSED APPROACH**  
Climb to TP (8,0 DME KE/6,1 DME KSC), turn RIGHT to VOR KSC, climbing to 4500 AMSL and hold.  
MAX IAS 160 kt (ACFT CAT A, B, C)/ 185 kt (ACFT CAT D) until established on track to VOR KSC

CHANGES: coordinates of DME KE and OM



Straight-in Approach	CAT I	2,5%	ft	899 (161)	911 (173)	919 (181)	930 (192)
	CAT II	2,5%	ft	811 (73)	828 (90)	840 (102)	854 (116)
Circling	LOC	2,5%	ft	1100 (362)		1100 (362)	1100 (362)
		4,0%	ft	1420 (665)	1680 (925)	2040 (1285)	2430 (1675)

DME KE	NM	5,0	4,0	3,0	2,0	1,0		
ALTITUDES	ft	2331	2012	1694	1375	1056		
Ground speed	kt	70	90	100	120	140	160	180
FAF - MAPt (4,9 NM)	min:s	4:10	3:14	2:55	2:26	2:05	1:49	1:37
RATE of descent (5,2%)	ft/min	372	478	531	637	743	849	955

Timing not authorized for defining the MAPt