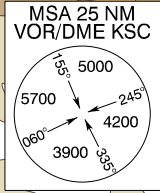
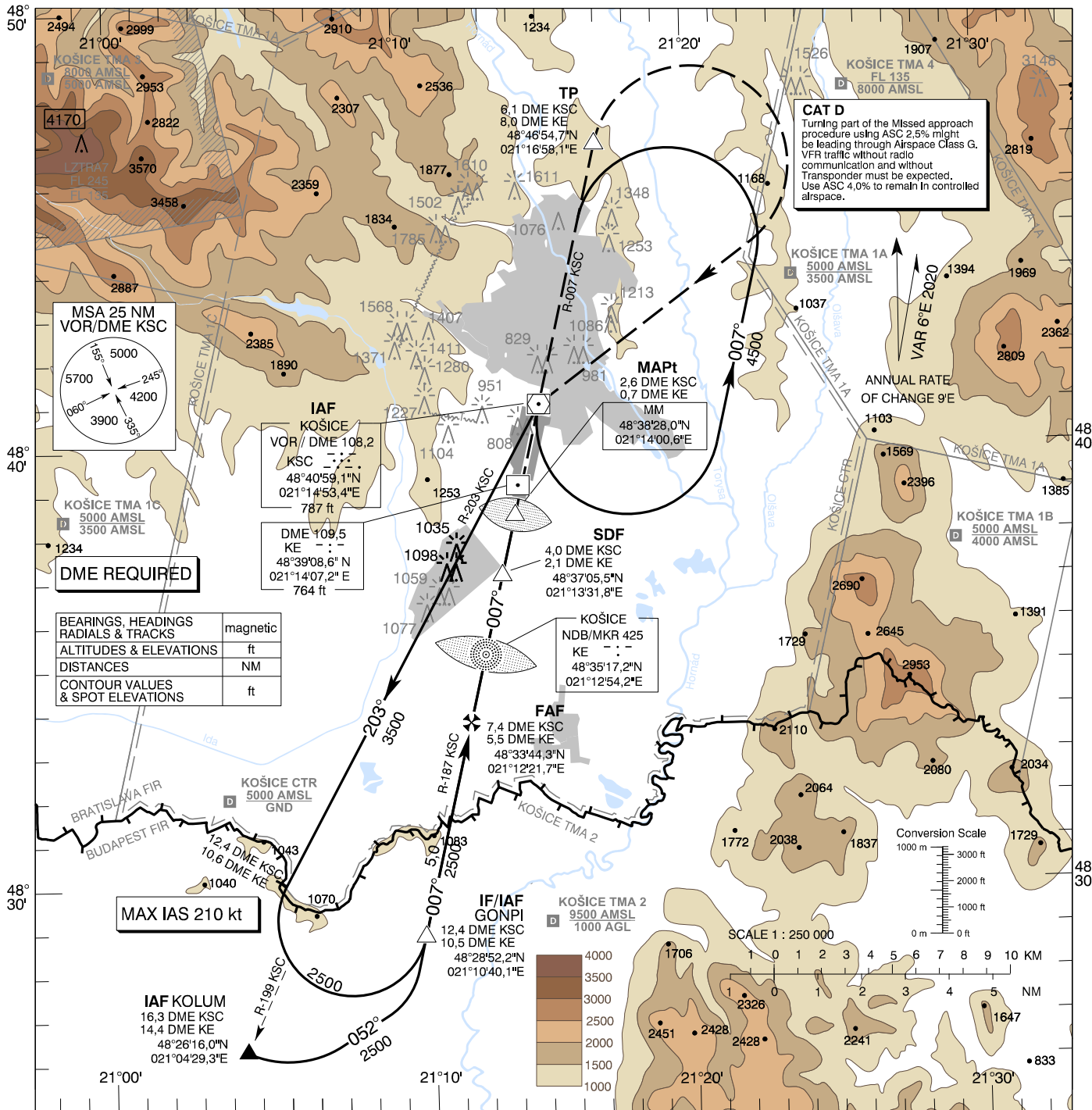


**INSTRUMENT
APPROACH
CHART - ICAO**

TRANSITION ALTITUDE
10 000 ft
AD ELEV 755 - 28 hPa
THR RWY 01 ELEV 738,4 - 27 hPa

KOŠICE RADAR 129,350 (119,850)
KOŠICE TOWER 120,400 (118,900)
KOŠICE ATIS 133,730

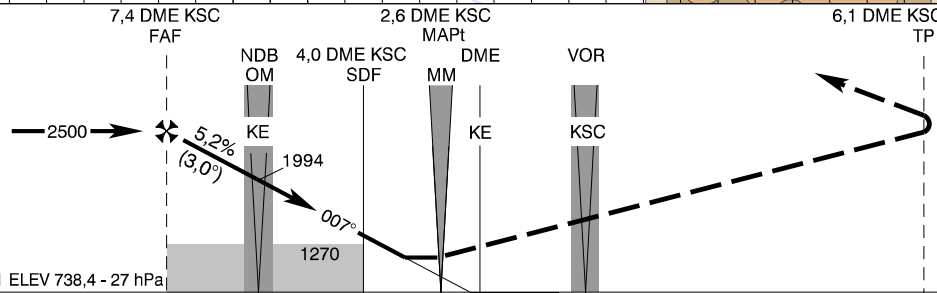
**KOŠICE (LZKZ)
VOR RWY 01
ACFT CAT A/B/C/D**



DME REQUIRED

BEARINGS, HEADINGS	magnetic
RADIALS & TRACKS	
ALTITUDES & ELEVATIONS	ft
DISTANCES	NM
CONTOUR VALUES & SPOT ELEVATIONS	ft

MAX IAS 210 kt



MISSED APPROACH
Climb to TP (6.1 DME KSC/8.0 DME KE), turn RIGHT to VOR KSC, climbing to 4500 AMSL and hold. MAX IAS 160 kt (ACFT CAT A, B, C)/185 kt (ACFT CAT D) until established on track to VOR KSC.

CHANGES: coordinates of DME KE

THR RWY 01 ELEV 738,4 - 27 hPa
NM to/from THR RWY 01

	OCA (OCH)				
	ASC	A	B	C	
Straight-in Approach	without SDF	2,5% ft	1270 (532)		
	with SDF	2,5% ft	1190 (452)		
Circling	without SDF	4,0% ft	1420 (665)	1680 (925)	2040 (1285)
	with SDF	4,0% ft	2430 (1675)		

DME KSC	NM	7,0	6,0	5,0	4,0	3,0		
ALTITUDES	ft	2359	2041	1722	1404	1086		
Ground speed	kt	70	90	100	120	140	160	180
FAF - MAPt (4,9 NM)	min:sec	4:10	3:14	2:55	2:26	2:05	1:49	1:37
Rate of descent (5,2%)	ft/min	372	478	531	637	743	849	955

Timing not authorized for defining the MAPt