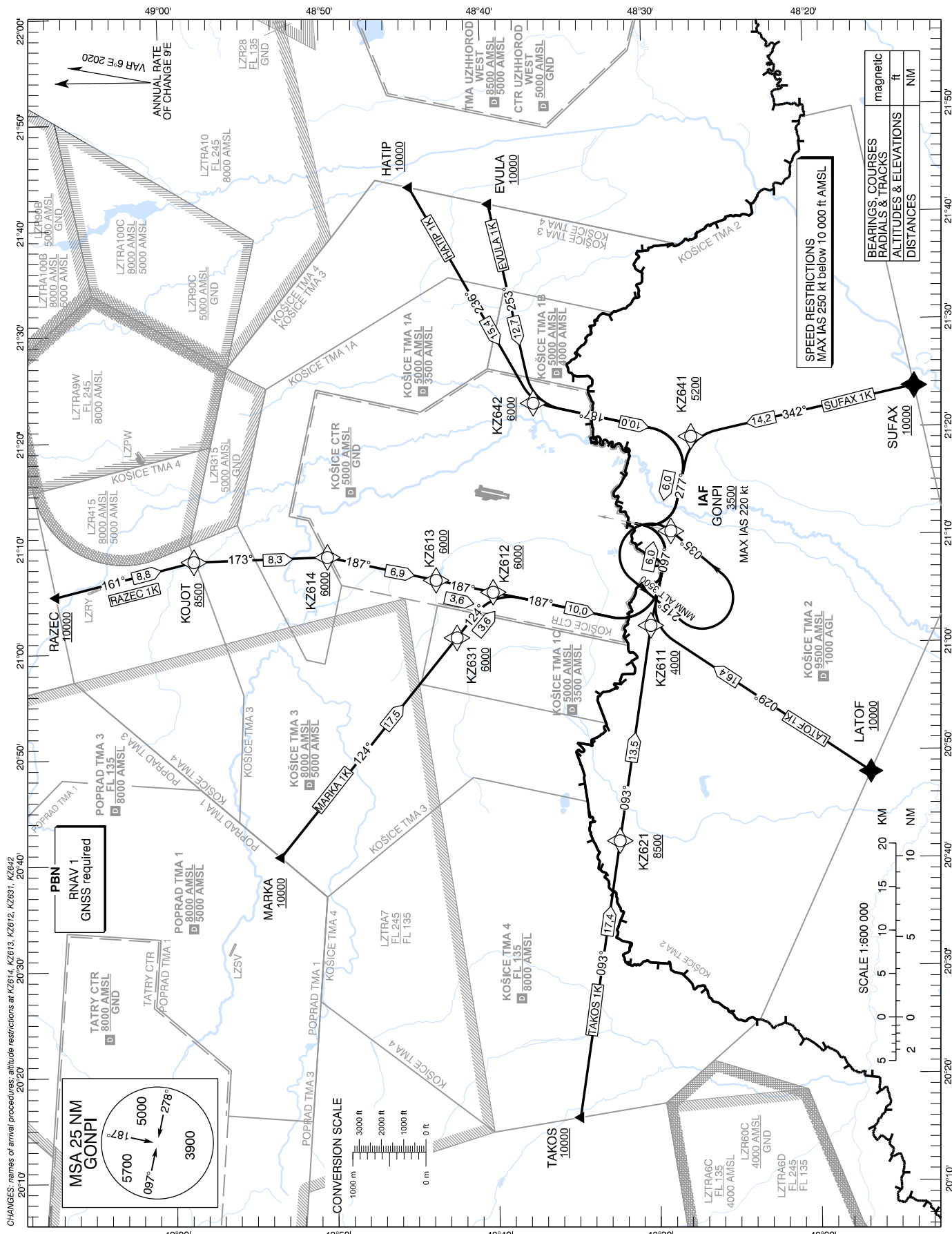


STANDARD ARRIVAL CHART -  
INSTRUMENT ( STAR ) - ICAO

TRANSITION ALTITUDE  
10 000 ft

KOŠICE RADAR	129,350 (119,850)
KOŠICE TOWER	120,400 (118,900)
KOŠICE ATIS	133,730

**KOŠICE (LZKZ)**  
**RNAV 1 STAR RWY 01**  
ACFT CAT A/B/C/D



## RNAV 1 STAR Coding Table: RAZEC 1K

Path Terminator	Waypoint			Course / Track MAG (True)	DIST	Turn Direction	Constraints		Navigation Specification
	Identifier	Flyover	Coordinates				Level	Speed	
IF	RAZEC	NO	49°07'05,26"N 021°05'25,34"E	-	-	-	A10000+	-	RNAV 1
TF	KOJOT	NO	48°58'29,88"N 021°08'33,47"E	161° (166,5°)	8,8 NM	-	A8500+	-	RNAV 1
TF	KZ614	NO	48°50'12,42"N 021°08'48,27"E	173° (178,9°)	8,3 NM	RIGHT	A6000+	-	RNAV 1
TF	KZ613	NO	48°43'29,69"N 021°06'28,11"E	187° (193,0°)	6,9 NM	RIGHT	A6000+	-	RNAV 1
TF	KZ612	NO	48°39'57,18"N 021°05'14,42"E	187° (192,9°)	3,6 NM	-	A6000+	-	RNAV 1
TF	KZ611	NO	48°30'12,76"N 021°01'52,65"E	187° (192,9°)	10,0 NM	-	A4000+	-	RNAV 1
TF	GONPI	NO	48°28'52,23"N 021°10'40,14"E	097° (102,9°)	6,0 NM	LEFT	A3500+	K220-	RNAV 1

## RNAV 1 STAR Coding Table: HATIP 1K

Path Terminator	Waypoint			Course / Track MAG (True)	DIST	Turn Direction	Constraints		Navigation Specification
	Identifier	Flyover	Coordinates				Level	Speed	
IF	HATIP	NO	48°44'38,04"N 021°43'20,02"E	-	-	-	A10000+	-	RNAV 1
TF	KZ642	NO	48°37'14,94"N 021°22'52,13"E	236° (241,5°)	15,4 NM	-	A6000+	-	RNAV 1
TF	KZ641	NO	48°27'31,03"N 021°19'27,16"E	187° (193,1°)	10,0 NM	LEFT	A5200+	-	RNAV 1
TF	GONPI	NO	48°28'52,23"N 021°10'40,14"E	277° (283,1°)	6,0 NM	RIGHT	A3500+	K220-	RNAV 1

## RNAV 1 STAR Coding Table: EVULA 1K

Path Terminator	Waypoint			Course / Track MAG (True)	DIST	Turn Direction	Constraints		Navigation Specification
	Identifier	Flyover	Coordinates				Level	Speed	
IF	EVULA	NO	48°39'45,36"N 021°41'34,93"E	-	-	-	A10000+	-	RNAV 1
TF	KZ642	NO	48°37'14,94"N 021°22'52,13"E	253° (258,7°)	12,7 NM	-	A6000+	-	RNAV 1
TF	KZ641	NO	48°27'31,03"N 021°19'27,16"E	187° (193,1°)	10,0 NM	LEFT	A5200+	-	RNAV 1
TF	GONPI	NO	48°28'52,23"N 021°10'40,14"E	277° (283,1°)	6,0 NM	RIGHT	A3500+	K220-	RNAV 1

### RNAV 1 STAR Coding Table: SUFAX 1K

Path Terminator	Waypoint			Course / Track MAG (True)	DIST	Turn Direction	Constraints		Navigation Specification
	Identifier	Flyover	Coordinates				Level	Speed	
IF	SUFAX	NO	48°13'36,29"N 021°23'49,32"E	-	-	-	A10000+	-	RNAV 1
TF	KZ641	NO	48°27'31,03"N 021°19'27,16"E	342° (348,2°)	14,2 NM	-	A5200+	-	RNAV 1
TF	GONPI	NO	48°28'52,23"N 021°10'40,14"E	277° (283,1°)	6,0 NM	LEFT	A3500+	K220-	RNAV 1

### RNAV 1 STAR Coding Table: LATOF 1K

Path Terminator	Waypoint			Course / Track MAG (True)	DIST	Turn Direction	Constraints		Navigation Specification
	Identifier	Flyover	Coordinates				Level	Speed	
IF	LATOF	NO	48°16'42,07"N 020°48'02,29"E	-	-	-	A10000+	-	RNAV 1
TF	KZ611	NO	48°30'12,76"N 021°01'52,65"E	029° (034,2°)	16,4 NM	-	A4000+	-	RNAV 1
TF	GONPI	NO	48°28'52,23"N 021°10'40,14"E	097° (102,9°)	6,0 NM	RIGHT	A3500+	K220-	RNAV 1

### RNAV 1 STAR Coding Table: TAKOS 1K

Path Terminator	Waypoint			Course / Track MAG (True)	DIST	Turn Direction	Constraints		Navigation Specification
	Identifier	Flyover	Coordinates				Level	Speed	
IF	TAKOS	NO	48°34'56,86"N 020°16'00,00"E	-	-	-	A10000+	-	RNAV 1
TF	KZ621	NO	48°32'19,33"N 020°41'49,19"E	093° (098,5°)	17,4 NM	-	A8500+	-	RNAV 1
TF	KZ611	NO	48°30'12,76"N 021°01'52,65"E	093° (098,9°)	13,5 NM	-	A4000+	-	RNAV 1
TF	GONPI	NO	48°28'52,23"N 021°10'40,14"E	097° (102,9°)	6,0 NM	RIGHT	A3500+	K220-	RNAV 1

### RNAV 1 STAR Coding Table: MARKA 1K

Path Terminator	Waypoint			Course / Track MAG (True)	DIST	Turn Direction	Constraints		Navigation Specification
	Identifier	Flyover	Coordinates				Level	Speed	
IF	MARKA	NO	48°53'22,34"N 020°40'37,64"E	-	-	-	A10000+	-	RNAV 1
TF	KZ631	NO	48°42'15,42"N 021°01'02,49"E	124° (129,4°)	17,5 NM	-	A6000+	-	RNAV 1
TF	KZ612	NO	48°39'57,18"N 021°05'14,42"E	124° (129,6°)	3,6 NM	-	A6000+	-	RNAV 1
TF	KZ611	NO	48°30'12,76"N 021°01'52,65"E	187° (192,9°)	10,0 NM	RIGHT	A4000+	-	RNAV 1
TF	GONPI	NO	48°28'52,23"N 021°10'40,14"E	097° (102,9°)	6,0 NM	LEFT	A3500+	K220-	RNAV 1

#### RNAV Holding

Holding Point	Inbound Track MAG (True)	Turn Direction	MAX IAS	Minimum Holding Altitude	Time	DIST MAHF	Remarks
GONPI	035° (040,9°)	LEFT	-	A3500	1 MIN	-	-