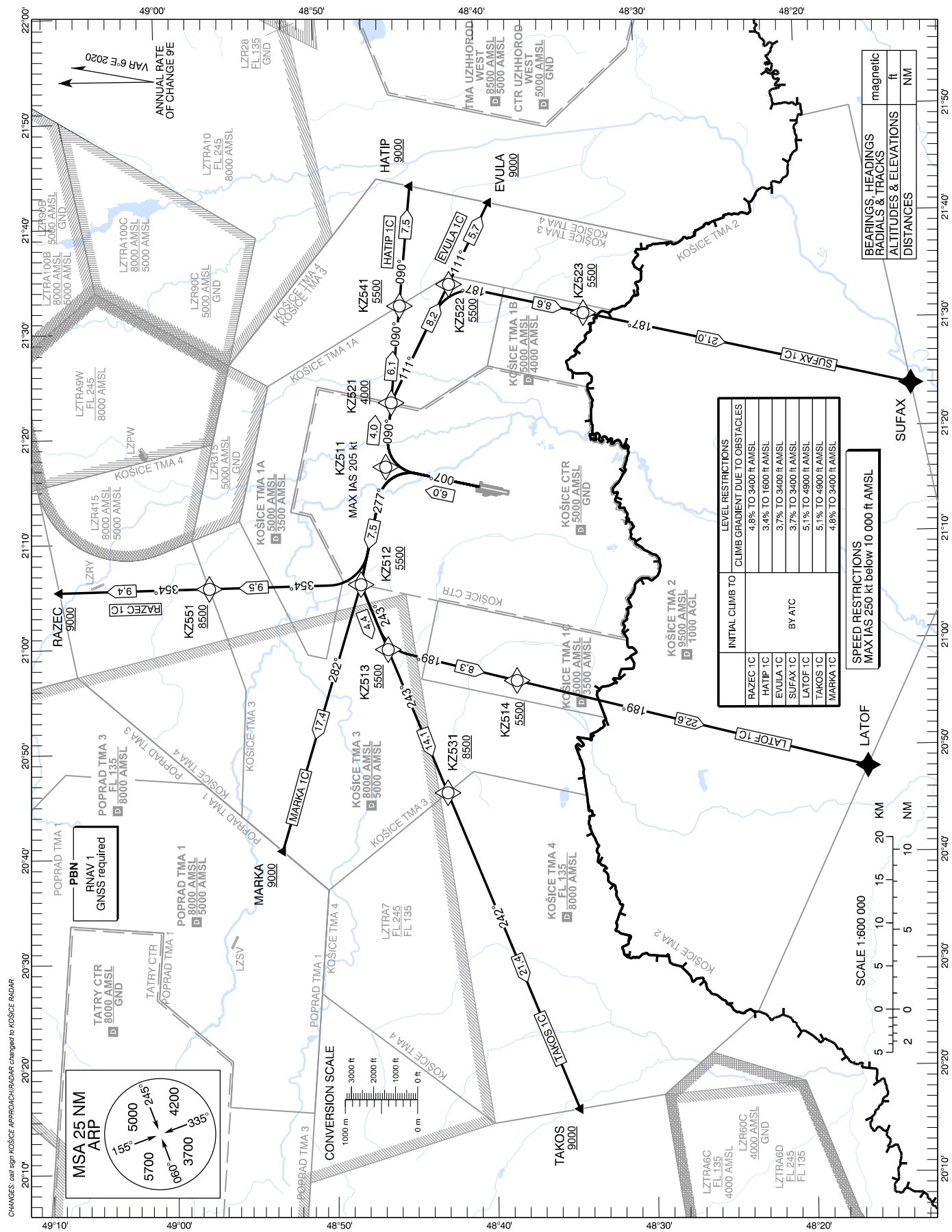


STANDARD DEPARTURE CHART -
INSTRUMENT (SID) - ICAO

TRANSITION ALTITUDE
10 000 ft

KOŠICE RADAR	129,350 (119,850)
KOŠICE TOWER	120,400 (118,900)
KOŠICE ATIS	133,730

KOŠICE (LZKZ)
RNAV 1 SID RWY 01
ACFT CAT A/B/C/D



INITIAL CLIMB TO	LEVEL RESTRICTIONS	
	CLIMB GRADIENT DUE TO OBSTACLES	
RAZEC IC	4.8% TO 3400 ft AMSL	
HATIP IC	3.4% TO 1600 ft AMSL	
EVULA IC	3.7% TO 3400 ft AMSL	
SUFAX IC	3.7% TO 3400 ft AMSL	BY ATC
LATOF IC	5.1% TO 4900 ft AMSL	
TAKOS IC	5.1% TO 4900 ft AMSL	
MARKA IC	4.8% TO 3400 ft AMSL	

SPEED RESTRICTIONS
MAX IAS 250 kt below 10 000 ft AMSL

BEARINGS, HEADINGS, RADIALS & TRACKS	ALTIMETERS & ELEVATIONS	magnetic	ft	NM

CHANGES: call sign KOŠICE APPROACH/RADAR changed to KOŠICE RADAR

Designator	Route	After Take-Off		Remarks
		INITIAL CLIMB TO	Expect FREQ	
RAZEC 1C	Climb on track 007° to KZ511 – KZ512 – KZ551 – RAZEC	BY ATC	KOŠICE RADAR 129,350 MHz	Climb gradient at least 4,8% until passing 3 400 FT AMSL, thereafter 3,3%.

RNAV 1 SID Coding Table: RAZEC 1C

Path Terminator	Waypoint			Course / Track MAG (True)	DIST	Turn Direction	Constraints		Navigation Specification
	Identifier	Flyover	Coordinates				Level	Speed	
CF	KZ511	NO	48°46'32,53"N 021°16'50,27"E	007° (013,0°)	6,0 NM	-	-	K205-	RNAV 1
TF	KZ512	NO	48°48'13,87"N 021°05'45,84"E	277° (283,1°)	7,5 NM	LEFT	A5500+	-	RNAV 1
TF	KZ551	NO	48°57'42,99"N 021°05'35,56"E	354° (359,3°)	9,5 NM	RIGHT	A8500+	-	RNAV 1
TF	RAZEC	NO	49°07'05,26"N 021°05'25,34"E	354° (359,3°)	9,4 NM	-	A9000+	-	RNAV 1

Designator	Route	After Take-Off		Remarks
		INITIAL CLIMB TO	Expect FREQ	
HATIP 1C	Climb on track 007° to KZ511 – KZ521 – KZ541 – HATIP	BY ATC	KOŠICE RADAR 129,350 MHz	Climb gradient at least 3,4% until passing 1 600 FT AMSL, thereafter 3,3%.

RNAV 1 SID Coding Table: HATIP 1C

Path Terminator	Waypoint			Course / Track MAG (True)	DIST	Turn Direction	Constraints		Navigation Specification
	Identifier	Flyover	Coordinates				Level	Speed	
CF	KZ511	NO	48°46'32,53"N 021°16'50,27"E	007° (013,0°)	6,0 NM	-	-	K205-	RNAV 1
TF	KZ521	NO	48°46'06,85"N 021°22'54,43"E	090° (096,1°)	4,0 NM	RIGHT	A4000+	-	RNAV 1
TF	KZ541	NO	48°45'27,59"N 021°32'02,58"E	090° (096,1°)	6,1 NM	-	A5500+	-	RNAV 1
TF	HATIP	NO	48°44'38,04"N 021°43'20,02"E	090° (096,2°)	7,5 NM	-	A9000+	-	RNAV 1

Designator	Route	After Take-Off		Remarks
		INITIAL CLIMB TO	Expect FREQ	
EVULA 1C	Climb on track 007° to KZ511 – KZ521 – KZ522 – EVULA	BY ATC	KOŠICE RADAR 129,350 MHz	Climb gradient at least 3,7% until passing 3 400 FT AMSL, thereafter 3,3%.

RNAV 1 SID Coding Table: EVULA 1C

Path Terminator	Waypoint			Course / Track MAG (True)	DIST	Turn Direction	Constraints		Navigation Specification
	Identifier	Flyover	Coordinates				Level	Speed	
CF	KZ511	NO	48°46'32,53"N 021°16'50,27"E	007° (013,0°)	6,0 NM	-	-	K205-	RNAV 1
TF	KZ521	NO	48°46'06,85"N 021°22'54,43"E	090° (096,1°)	4,0 NM	RIGHT	A4000+	-	RNAV 1
TF	KZ522	NO	48°42'21,28"N 021°33'58,60"E	111° (117,1°)	8,2 NM	RIGHT	A5500+	-	RNAV 1
TF	EVULA	NO	48°39'45,37"N 021°41'34,93"E	111° (117,2°)	5,7 NM	-	A9000+	-	RNAV 1

Designator	Route	After Take-Off		Remarks
		INITIAL CLIMB TO	Expect FREQ	
SUFAX 1C	Climb on track 007° to KZ511 – KZ521 – KZ522 – KZ523 – SUFAX	BY ATC	KOŠICE RADAR 129,350 MHz	Climb gradient at least 3,7% until passing 3 400 FT AMSL, thereafter 3,3%.

RNAV 1 SID Coding Table: SUFAX 1C

Path Terminator	Waypoint			Course / Track MAG (True)	DIST	Turn Direction	Constraints		Navigation Specification
	Identifier	Flyover	Coordinates				Level	Speed	
CF	KZ511	NO	48°46'32,53"N 021°16'50,27"E	007° (013,0°)	6,0 NM	-	-	K205-	RNAV 1
TF	KZ521	NO	48°46'06,85"N 021°22'54,43"E	090° (096,1°)	4,0 NM	RIGHT	A4000+	-	RNAV 1
TF	KZ522	NO	48°42'21,28"N 021°33'58,60"E	111° (117,1°)	8,2 NM	RIGHT	A5500+	-	RNAV 1
TF	KZ523	NO	48°33'59,43"N 021°31'00,11"E	187° (193,3°)	8,6 NM	RIGHT	A5500+	-	RNAV 1
TF	SUFAX	NO	48°13'36,29"N 021°23'49,32"E	187° (193,2°)	21,0 NM	-	-	-	RNAV 1

Designator	Route	After Take-Off		Remarks
		INITIAL CLIMB TO	Expect FREQ	
LATOF 1C	Climb on track 007° to KZ511 – KZ512 – KZ513 – KZ514 – LATOF	BY ATC	KOŠICE RADAR 129,350 MHz	Climb gradient at least 5,1% until passing 4 900 FT AMSL, thereafter 3,3%.

RNAV 1 SID Coding Table: LATOF 1C

Path Terminator	Waypoint			Course / Track MAG (True)	DIST	Turn Direction	Constraints		Navigation Specification
	Identifier	Flyover	Coordinates				Level	Speed	
CF	KZ511	NO	48°46'32,53"N 021°16'50,27"E	007° (013,0°)	6,0 NM	-	-	K205-	RNAV 1
TF	KZ512	NO	48°48'13,87"N 021°05'45,84"E	277° (283,1°)	7,5 NM	LEFT	A5500+	-	RNAV 1
TF	KZ513	NO	48°46'36,39"N 020°59'34,86"E	243° (248,4°)	4,4 NM	LEFT	A5500+	-	RNAV 1
TF	KZ514	NO	48°38'34,47"N 020°56'27,45"E	189° (194,5°)	8,3 NM	LEFT	A5500+	-	RNAV 1
TF	LATOF	NO	48°16'42,07"N 020°48'02,29"E	189° (194,4°)	22,6 NM	-	-	-	RNAV 1

Designator	Route	After Take-Off		Remarks
		INITIAL CLIMB TO	Expect FREQ	
TAKOS 1C	Climb on track 007° to KZ511 – KZ512 – KZ531 – TAKOS	BY ATC	KOŠICE RADAR 129,350 MHz	Climb gradient at least 5,1% until passing 4 900 FT AMSL, thereafter 3,3%.

RNAV 1 SID Coding Table: TAKOS 1C

Path Terminator	Waypoint			Course / Track MAG (True)	DIST	Turn Direction	Constraints		Navigation Specification
	Identifier	Flyover	Coordinates				Level	Speed	
CF	KZ511	NO	48°46'32,53"N 021°16'50,27"E	007° (013,0°)	6,0 NM	-	-	K205-	RNAV 1
TF	KZ512	NO	48°48'13,87"N 021°05'45,84"E	277° (283,1°)	7,5 NM	LEFT	A5500+	-	RNAV 1
TF	KZ531	NO	48°43'00,11"N 020°45'57,61"E	243° (248,4°)	14,1 NM	LEFT	A8500+	-	RNAV 1
TF	TAKOS	NO	48°34'56,86"N 020°16'00,00"E	242° (248,1°)	21,4 NM	-	A9000+	-	RNAV 1

Designator	Route	After Take-Off		Remarks
		INITIAL CLIMB TO	Expect FREQ	
MARKA 1C	Climb on track 007° to KZ511 – KZ512 – MARKA	BY ATC	KOŠICE RADAR 129,350 MHz	Climb gradient at least 4,8% until passing 3 400 FT AMSL, thereafter 3,3%.

RNAV 1 SID Coding Table: MARKA 1C

Path Terminator	Waypoint			Course / Track MAG (True)	DIST	Turn Direction	Constraints		Navigation Specification
	Identifier	Flyover	Coordinates				Level	Speed	
CF	KZ511	NO	48°46'32,53"N 021°16'50,27"E	007° (013,0°)	6,0 NM	-	-	K205-	RNAV 1
TF	KZ512	NO	48°48'13,87"N 021°05'45,84"E	277° (283,1°)	7,5 NM	LEFT	A5500+	-	RNAV 1
TF	MARKA	NO	48°53'22,34"N 020°40'37,64"E	282° (287,4°)	17,4 NM	RIGHT	A9000+	-	RNAV 1

ASC 3,4 % - 207 ft/NM

Ground speed (kt)	75	100	150	200	250	300
Vertical speed (ft/min)	258	344	516	689	861	1033

ASC 3,7 % - 225 ft/NM

Ground speed (kt)	75	100	150	200	250	300
Vertical speed (ft/min)	281	375	562	749	937	1124

ASC 4,8 % - 292 ft/NM

Ground speed (kt)	75	100	150	200	250	300
Vertical speed (ft/min)	365	486	729	972	1215	1458

ASC 5,1 %- 310 ft/NM

Ground speed (kt)	75	100	150	200	250	300
Vertical speed (ft/min)	387	516	775	1033	1291	1549