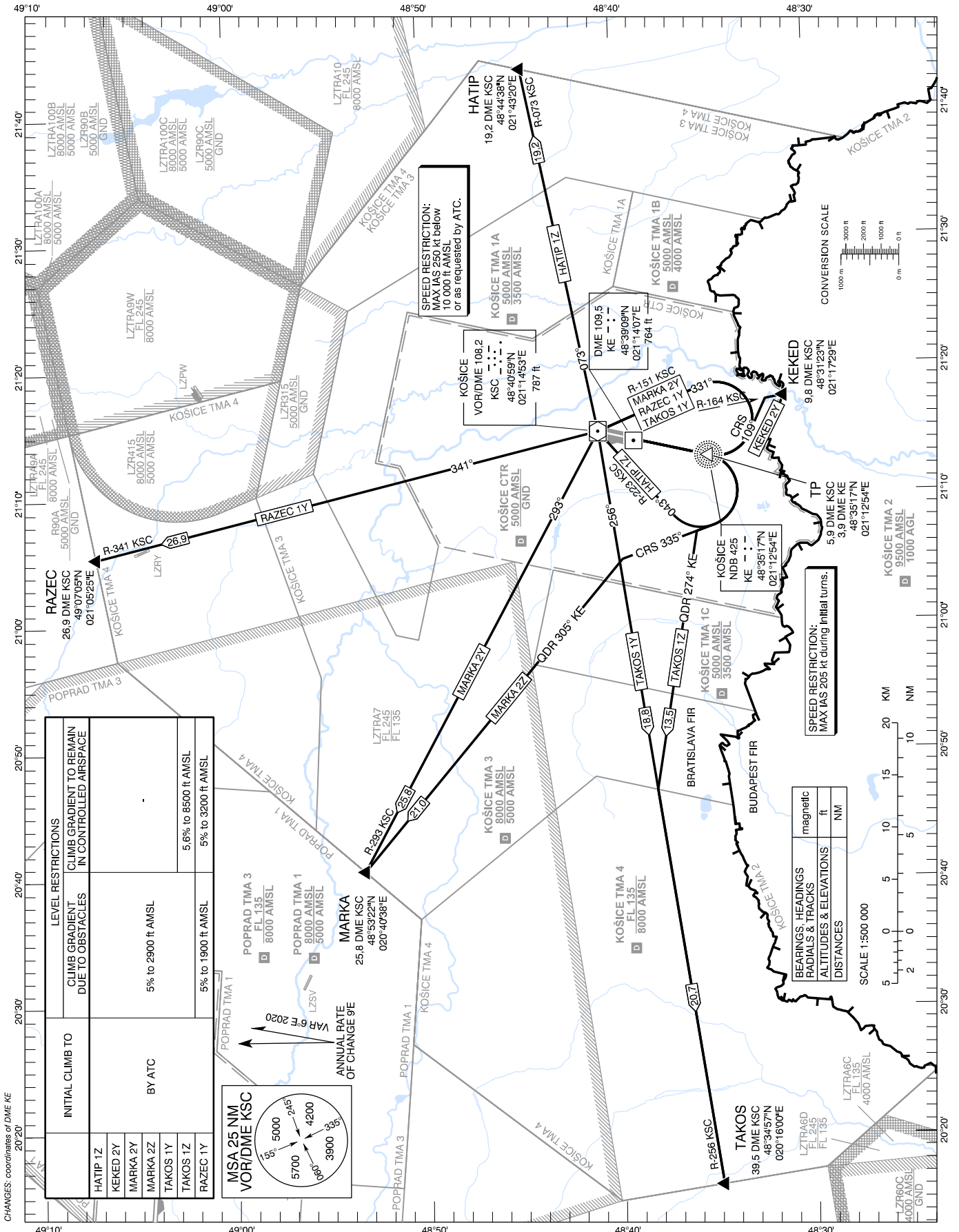


STANDARD DEPARTURE CHART -
INSTRUMENT (SID) - ICAO

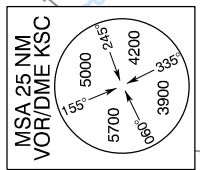
TRANSITION ALTITUDE
10 000 ft

KOŠICE RADAR 129,350 (119,850)
KOŠICE TOWER 120,400 (118,900)
KOŠICE ATIS 133,730

KOŠICE (LZKZ)
SID RWY 19
ACFT CAT A/B/C/D



| INITIAL CLIMB TO | LEVEL RESTRICTIONS | CLIMB GRADIENT DUE TO OBSTACLES | CLIMB GRADIENT TO REMAIN IN CONTROLLED AIRSPACE |
|------------------|--------------------|---------------------------------|---|
| HATIP 1Z | BY ATC | 5% to 2900 ft AMSL | 5.6% to 8500 ft AMSL |
| KEKED 2Y | | | |
| MARKA 2Y | | | |
| TAKOS 1Y | | | |
| TAKOS 1Z | | | |
| RAZEC 1Y | 5% to 1900 ft AMSL | 5% to 3200 ft AMSL | |



| BEARINGS, HEADINGS, RADIALS & TRACKS | magnetic |
|--------------------------------------|----------|
| ALTITUDES & ELEVATIONS | ft |
| DISTANCES | NM |