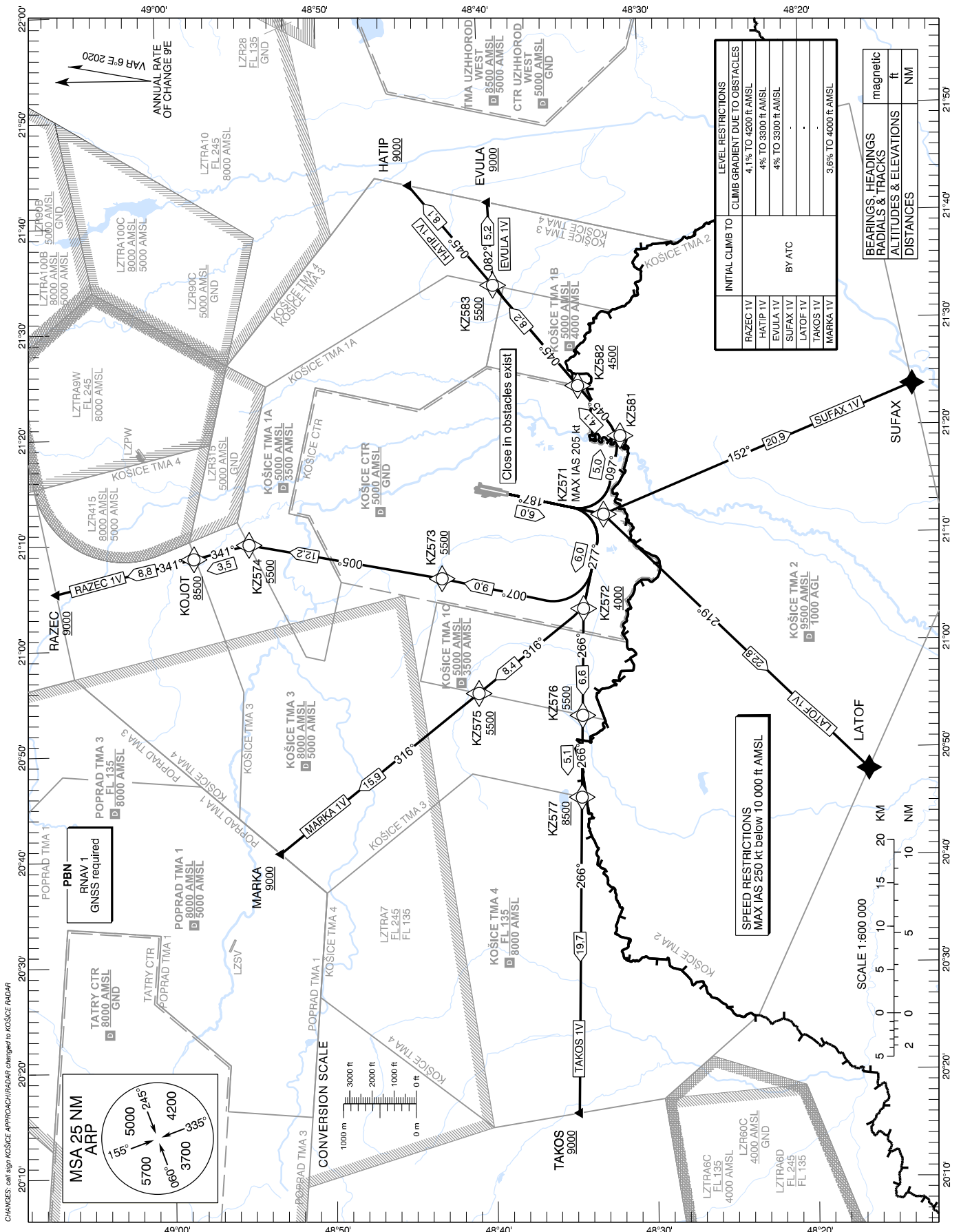


STANDARD DEPARTURE CHART -
INSTRUMENT (SID) - ICAO

TRANSITION ALTITUDE
10 000 ft

KOŠICE RADAR 129,350 (119,850)
KOŠICE TOWER 120,400 (118,900)
KOŠICE ATIS 133,730

KOŠICE (LZKZ)
RNAV 1 SID RWY 19
ACFT CAT A/B/C/D



Designator	Route	After Take-Off		Remarks
		INITIAL CLIMB TO	Expect FREQ	
RAZEC 1V	Climb on track 187° to KZ571 – KZ572 – KZ573 – KZ574 – KOJOT – RAZEC	BY ATC	KOŠICE RADAR 129,350 MHz	Climb gradient at least 4,1% until passing 4 200 FT AMSL, thereafter 3,3%. Close in obstacles exist.

RNAV 1 SID Coding Table: RAZEC 1V

Path Terminator	Waypoint			Course / Track MAG (True)	DIST	Turn Direction	Constraints		Navigation Specification
	Identifier	Flyover	Coordinates				Level	Speed	
CF	KZ571	NO	48°32'58,08"N 021°12'05,57"E	187° (193,0°)	6,0 NM	-	-	K205-	RNAV 1
TF	KZ572	NO	48°34'18,72"N 021°03'17,40"E	277° (283,0°)	6,0 NM	RIGHT	A4000+	-	RNAV 1
TF	KZ573	NO	48°43'04,66"N 021°06'19,43"E	007° (012,9°)	9,0 NM	RIGHT	A5500+	-	RNAV 1
TF	KZ574	NO	48°55'03,23"N 021°09'48,59"E	005° (010,9°)	12,2 NM	LEFT	A5500+	-	RNAV 1
TF	KOJOT	NO	48°58'29,88"N 021°08'33,47"E	341° (346,5°)	3,5 NM	LEFT	A8500+	-	RNAV 1
TF	RAZEC	NO	49°07'05,26"N 021°05'25,34"E	341° (346,5°)	8,8 NM	-	A9000+	-	RNAV 1

Designator	Route	After Take-Off		Remarks
		INITIAL CLIMB TO	Expect FREQ	
HATIP 1V	Climb on track 187° to KZ571 – KZ581 – KZ582 – KZ583 – HATIP	BY ATC	KOŠICE RADAR 129,350 MHz	Climb gradient at least 4,0% until passing 3 300 FT AMSL, thereafter 3,3%. Close in obstacles exist.

RNAV 1 SID Coding Table: HATIP 1V

Path Terminator	Waypoint			Course / Track MAG (True)	DIST	Turn Direction	Constraints		Navigation Specification
	Identifier	Flyover	Coordinates				Level	Speed	
CF	KZ571	NO	48°32'58,08"N 021°12'05,57"E	187° (193,0°)	6,0 NM	-	-	K205-	RNAV 1
TF	KZ581	NO	48°31'50,37"N 021°19'25,34"E	097° (103,0°)	5,0 NM	LEFT	-	-	RNAV 1
TF	KZ582	NO	48°34'24,41"N 021°24'11,51"E	045° (050,9°)	4,1 NM	LEFT	A4500+	-	RNAV 1
TF	KZ583	NO	48°39'32,94"N 021°33'47,27"E	045° (051,0°)	8,2 NM	-	A5500+	-	RNAV 1
TF	HATIP	NO	48°44'38,04"N 021°43'20,02"E	045° (051,1°)	8,1 NM	-	A9000+	-	RNAV 1

Designator	Route	After Take-Off		Remarks
		INITIAL CLIMB TO	Expect FREQ	
EVULA 1V	Climb on track 187° to KZ571 – KZ581 – KZ582 – KZ583 – EVULA	BY ATC	KOŠICE RADAR 129,350 MHz	Climb gradient at least 4,0% until passing 3 300 FT AMSL, thereafter 3,3%. Close in obstacles exist.

RNAV 1 SID Coding Table: EVULA 1V

Path Terminator	Waypoint			Course / Track MAG (True)	DIST	Turn Direction	Constraints		Navigation Specification
	Identifier	Flyover	Coordinates				Level	Speed	
CF	KZ571	NO	48°32'58,08"N 021°12'05,57"E	187° (193,0°)	6,0 NM	-	-	K205-	RNAV 1
TF	KZ581	NO	48°31'50,37"N 021°19'25,34"E	097° (103,0°)	5,0 NM	LEFT	-	-	RNAV 1
TF	KZ582	NO	48°34'24,41"N 021°24'11,51"E	045° (050,9°)	4,1 NM	LEFT	A4500+	-	RNAV 1
TF	KZ583	NO	48°39'32,94"N 021°33'47,27"E	045° (051,0°)	8,2 NM	-	A5500+	-	RNAV 1
TF	EVULA	NO	48°39'45,36"N 021°41'34,93"E	082° (087,7°)	5,2 NM	RIGHT	A9000+	-	RNAV 1

Designator	Route	After Take-Off		Remarks
		INITIAL CLIMB TO	Expect FREQ	
SUFAX 1V	Climb on track 187° to KZ571 – SUFAX	BY ATC	KOŠICE RADAR 129,350 MHz	Close in obstacles exist

RNAV 1 SID Coding Table: SUFAX 1V

Path Terminator	Waypoint			Course / Track MAG (True)	DIST	Turn Direction	Constraints		Navigation Specification
	Identifier	Flyover	Coordinates				Level	Speed	
CF	KZ571	NO	48°32'58,08"N 021°12'05,57"E	187° (193,0°)	6,0 NM	-	-	K205-	RNAV 1
TF	SUFAX	NO	48°13'36,29"N 021°23'49,32"E	152° (158,0°)	20,9 NM	LEFT	-	-	RNAV 1

Designator	Route	After Take-Off		Remarks
		INITIAL CLIMB TO	Expect FREQ	
LATOF 1V	Climb on track 187° to KZ571 – LATOF	BY ATC	KOŠICE RADAR 129,350 MHz	Close in obstacles exist

RNAV 1 SID Coding Table: LATOF 1V

Path Terminator	Waypoint			Course / Track MAG (True)	DIST	Turn Direction	Constraints		Navigation Specification
	Identifier	Flyover	Coordinates				Level	Speed	
CF	KZ571	NO	48°32'58,08"N 021°12'05,57"E	187° (193,0°)	6,0 NM	-	-	K205-	RNAV 1
TF	LATOF	NO	48°16'42,07"N 020°48'02,29"E	219° (224,7°)	22,8 NM	RIGHT	-	-	RNAV 1

Designator	Route	After Take-Off		Remarks
		INITIAL CLIMB TO	Expect FREQ	
TAKOS 1V	Climb on track 187° to KZ571 – KZ572 – KZ576 – KZ577 – TAKOS	BY ATC	KOŠICE RADAR 129,350 MHz	Close in obstacles exist

RNAV 1 SID Coding Table: TAKOS 1V

Path Terminator	Waypoint			Course / Track MAG (True)	DIST	Turn Direction	Constraints		Navigation Specification
	Identifier	Flyover	Coordinates				Level	Speed	
CF	KZ571	NO	48°32'58,08"N 021°12'05,57"E	187° (193,0°)	6,0 NM	-	-	K205-	RNAV 1
TF	KZ572	NO	48°34'18,72"N 021°03'17,40"E	277° (283,0°)	6,0 NM	RIGHT	A4000+	-	RNAV 1
TF	KZ576	NO	48°34'28,41"N 020°53'17,14"E	266° (271,5°)	6,6 NM	LEFT	A5500+	-	RNAV 1
TF	KZ577	NO	48°34'35,25"N 020°45'36,85"E	266° (271,3°)	5,1 NM	-	A8500+	-	RNAV 1
TF	TAKOS	NO	48°34'56,86"N 020°16'00,00"E	266° (271,2°)	19,7 NM	-	A9000+	-	RNAV 1

Designator	Route	After Take-Off		Remarks
		INITIAL CLIMB TO	Expect FREQ	
MARKA 1V	Climb on track 187° to KZ571 – KZ572 – KZ575 – MARKA	BY ATC	KOŠICE RADAR 129,350 MHz	Climb gradient at least 3,6% until passing 4 000 FT AMSL, thereafter 3,3%. Close in obstacles exist.

RNAV 1 SID Coding Table: MARKA 1V

Path Terminator	Waypoint			Course / Track MAG (True)	DIST	Turn Direction	Constraints		Navigation Specification
	Identifier	Flyover	Coordinates				Level	Speed	
CF	KZ571	NO	48°32'58,08"N 021°12'05,57"E	187° (193,0°)	6,0 NM	-	-	K205-	RNAV 1
TF	KZ572	NO	48°34'18,72"N 021°03'17,40"E	277° (283,0°)	6,0 NM	RIGHT	A4000+	-	RNAV 1
TF	KZ575	NO	48°40'54,54"N 020°55'29,31"E	316° (322,0°)	8,4 NM	RIGHT	A5500+	-	RNAV 1
TF	MARKA	NO	48°53'22,34"N 020°40'37,64"E	316° (322,9°)	15,9 NM	-	A9000+	-	RNAV 1

ASC 3,6 % - 219 ft/NM

ASC 4 % - 243 ft/NM

Ground speed (kt)	75	100	150	200	250	300
Vertical speed (ft/min)	273	365	547	729	911	1094

Ground speed (kt)	75	100	150	200	250	300
Vertical speed (ft/min)	304	405	608	810	1013	1215

ASC 4,1 % - 249 ft/NM

Ground speed (kt)	75	100	150	200	250	300
Vertical speed (ft/min)	311	415	623	830	1038	1246