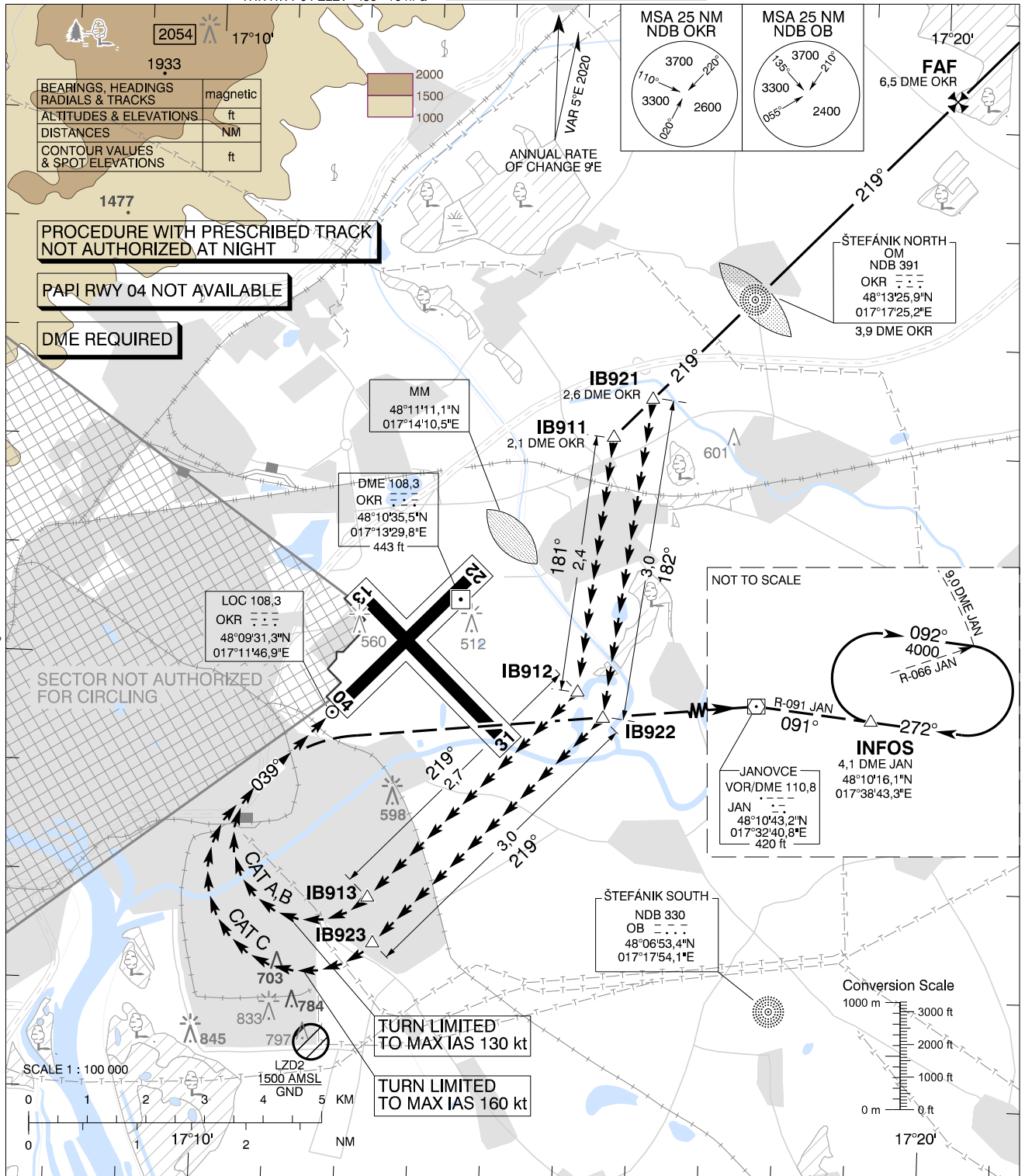


**CIRCLING
APPROACH
CHART**

TRANSITION ALTITUDE
10 000 ft
AD ELEV 436 - 16 hPa
THR RWY 04 ELEV 436 - 16 hPa

ŠTEFÁNIK RADAR 134,925 (118,975)
ŠTEFÁNIK TOWER 118,300 (118,700)
ŠTEFÁNIK ATIS ARRIVAL 133,880

BRATISLAVA/M. R. ŠTEFÁNIK (LZIB)
RWY 22 → 04
ACFT CAT A/B/C/D



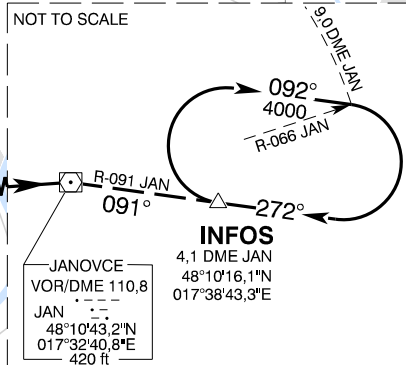
**PROCEDURE WITH PRESCRIBED TRACK
NOT AUTHORIZED AT NIGHT**

PAPI RWY 04 NOT AVAILABLE

DME REQUIRED

**SECTOR NOT AUTHORIZED
FOR CIRCLING**

**TURN LIMITED
TO MAX IAS 130 kt**
**TURN LIMITED
TO MAX IAS 160 kt**



MISSED APPROACH

Proceed with RIGHT turn to VOR JAN, intercept R-091 VOR JAN (track 091°) to join the holding at INFOS (R-091 VOR JAN / 4,1 DME JAN) climbing to 4 000 AMSL. MAX IAS as prescribed for relevant ACFT CAT until established on track to VOR JAN.

WARNING

In case of missed approach before leaving final approach track, follow instrument missed approach procedure for RWY 22.

PROCEDURE

Execute a published instrument approach procedure to circling OCA(H) for relevant ACFT CAT, proceed VISUALLY approximately onto tracks and distances given on the chart above.

OCA (OCH)		A	B	C	D
WITHOUT PRESCRIBED TRACK	ft	900 (464)	1000 (564)	1970 (1534)	2450 (2014)
WITH PRESCRIBED TRACK	ft	1080 (644)		1240 (804)	—
MNM VISIBILITY	m	1900	2800	3700	4600

	IB911	IB912	IB913
CAT A, B	48°12'07,6"N 017°15'32,1"E	48°09'46,4"N 017°15'08,7"E	48°07'49,7"N 017°12'20,7"E
	11,6 DME JAN R-272 JAN	11,8 DME JAN R-261 JAN	13,9 DME JAN R-253 JAN
	IB921	IB922	IB923
CAT C	48°12'29,3"N 017°16'03,4"E	48°09'32,5"N 017°15'30,2"E	48°07'24,5"N 017°12'25,9"E
	11,3 DME JAN R-274 JAN	11,6 DME JAN R-259 JAN	14,0 DME JAN R-251 JAN

CHANGES: MAG VAR; MSA; MISSED APPROACH; HOLDING; obstacles