

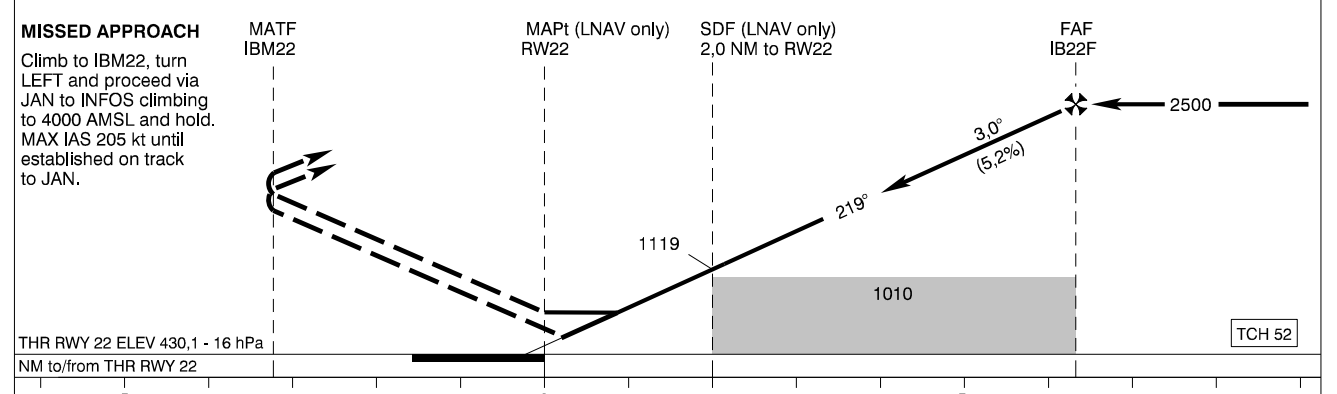
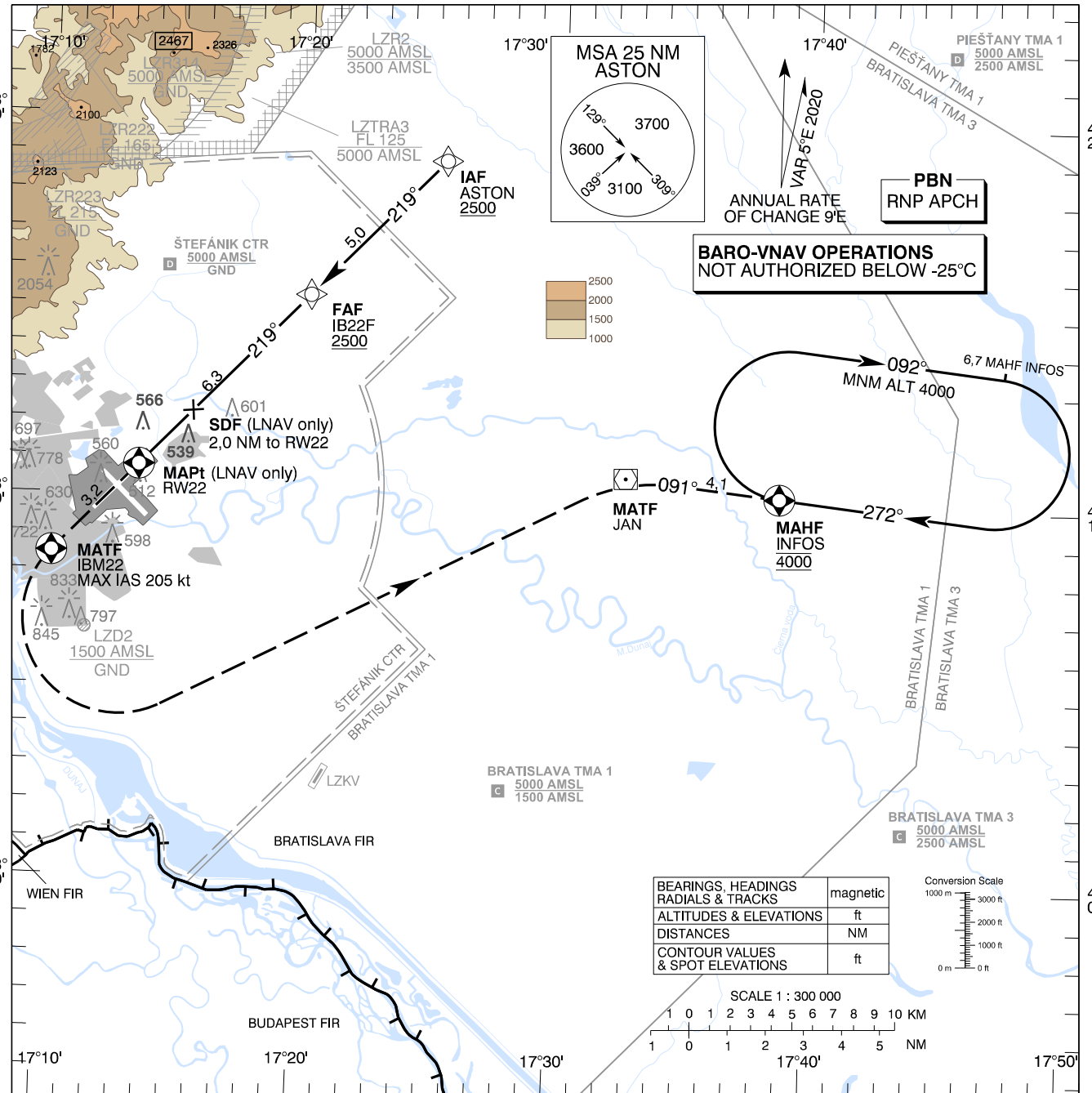
**INSTRUMENT APPROACH CHART - ICAO**

TRANSITION ALTITUDE 10 000 ft  
AD ELEV 436 -16 hPa  
THR RWY 22 ELEV 430,1 -16 hPa

ŠTEFÁNIK RADAR 134,925 (118,975)  
ŠTEFÁNIK TOWER 118,300 (118,700)  
ŠTEFÁNIK ATIS ARRIVAL 133,880

EGNOS CH 50609  
E22A

**BRATISLAVA/M. R. Štefánik (LZIB) RNP RWY 22**  
ACFT CAT A/B/C/D



OCA (OCH)		A	B	C	D
Straight-In Approach	LNAV	790 (354)			
	LNAV/VNAV	674 (244)	684 (254)	690 (260)	699 (269)
	LPV	594 (164)	606 (176)	614 (184)	625 (195)
Circling		Not authorized WEST of the Airport BTN EXTD RCL 13/31 and 04/22 See the Circling Approach Chart			

Dist RW22 (THR) NM	6,0	5,0	4,0	3,0	2,0		
ALTITUDES ft	2393	2074	1756	1437	1119		
Ground speed kt	70	90	100	120	140	160	180
IB22F - RW22 (6,3 NM) min:sec	5:26	4:14	3:48	3:10	2:43	2:23	2:07
Rate of descent (5,2%) ft/min	372	478	531	637	743	849	955

Timing not authorized for defining the MAPt

CHANGES: BRATISLAVA TMA 1 and PIEŠŤANY TMA 1 reshaped; BRATISLAVA TMA 3 added; MAG VAR; HOLDING; MISSED APPROACH; OCA (OCH); LZR2, LZTRA3 renamed to LZR2, LZTRA3; obstacles; scale

### Instrument Approach Procedure Coding Table: Bratislava/M. R. Štefánik RNP RWY 22

Path Terminator	Waypoint				Course / Track MAG (True)	DIST	Turn Direction	Constraints		Navigation Specification
	Identifier	Type	Flyover	Coordinates				Level	Speed	
IF	ASTON	IAF	NO	48°18'55,60"N 017°25'22,39"E	-	-	-	A2500+	-	RNP APCH
TF	IB22F	FAF	NO	48°15'20,09"N 017°20'10,10"E	219° (224,1°)	5,0 NM	-	A2500+	-	RNP APCH
TF	RW22	MAPt	YES	48°10'46,56"N 017°13'35,27"E	219° (224,0°)	6,3 NM	-	-	-	RNP APCH
TF	IBM22	MATF	YES	48°08'27,75"N 017°10'15,57"E	219° (223,9°)	3,2 NM	-	-	K205-	RNP APCH
DF	JAN	MATF	NO	48°10'43,17"N 017°32'40,76"E	-	-	LEFT	-	-	RNP APCH
TF	INFOS	MAHF	YES	48°10'16,10"N 017°38'43,31"E	091° (096,3°)	4,1 NM	RIGHT	A4000	-	RNP APCH
<b>RNAV Holding</b>										
Holding Point	Inbound Track MAG (True)	Turn Direction	MAX IAS	Minimum Holding Altitude	Time	DIST MAHF	Remarks			
INFOS	272° (276,5°)	RIGHT	-	A4000	-	6,7 NM	-			

### SBAS FAS Data Block Coding Table Bratislava/M.R. Štefánik RNP RWY 22

Input data	
Operation Type	0
SBAS Provider	1 (EGNOS)
Airport Identifier	LZIB
Runway	22
Runway Letter	0 (None)
Approach Performance Designator	0
Route Indicator	
Reference Path Data Selector	0
Reference Path Identifier	E22A
LTP/FTP Latitude	481046.5550N
LTP/FTP Longitude	0171335.2675E
LTP/FTP Ellipsoidal Height (metres)	174.7
FPAP Latitude	480938.3950N
Delta FPAP Latitude (seconds)	-68.1600
FPAP Longitude	0171157.1505E
Delta FPAP Longitude (seconds)	-98.1170
Threshold Crossing Height	15.7
TCH Units Selector	1 (meters)
Glidepath Angle (degrees)	3.00
Course Width (metres)	105.00
Length Offset (metres)	24
HAL (metres)	40.0
VAL (metres)	35.0
Output data	
Data Block	10 02 09 1A 0C 16 00 00 01 32 32 05 36 2B AD 14 47 8E 64 07 D3 1A 80 EB FD 76 01 FD 3A 81 2C 01 64 03 C8 AF 13 21 D9 F8
Calculated CRC Value	1321D9F8
Required Additional Data	
ICAO Code	LZ
LTP/FTP Orthometric Height (metres)	131.1