

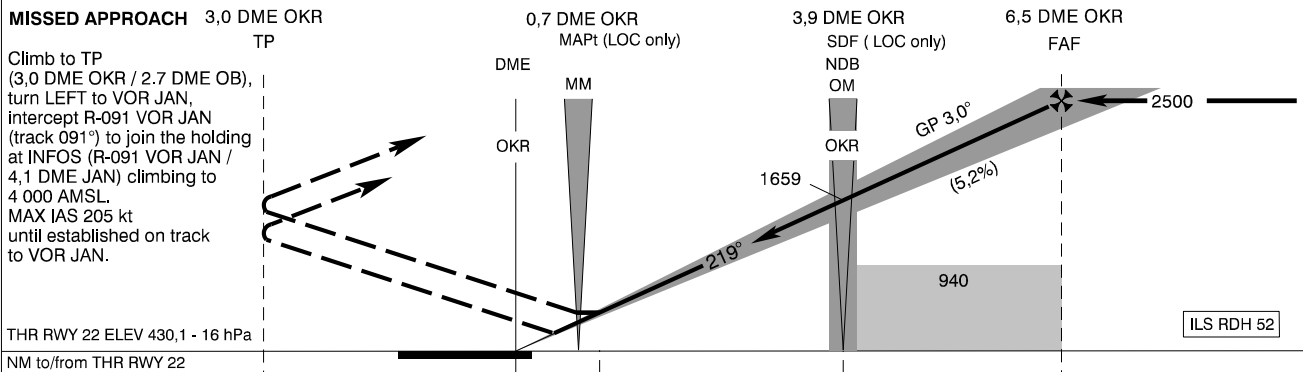
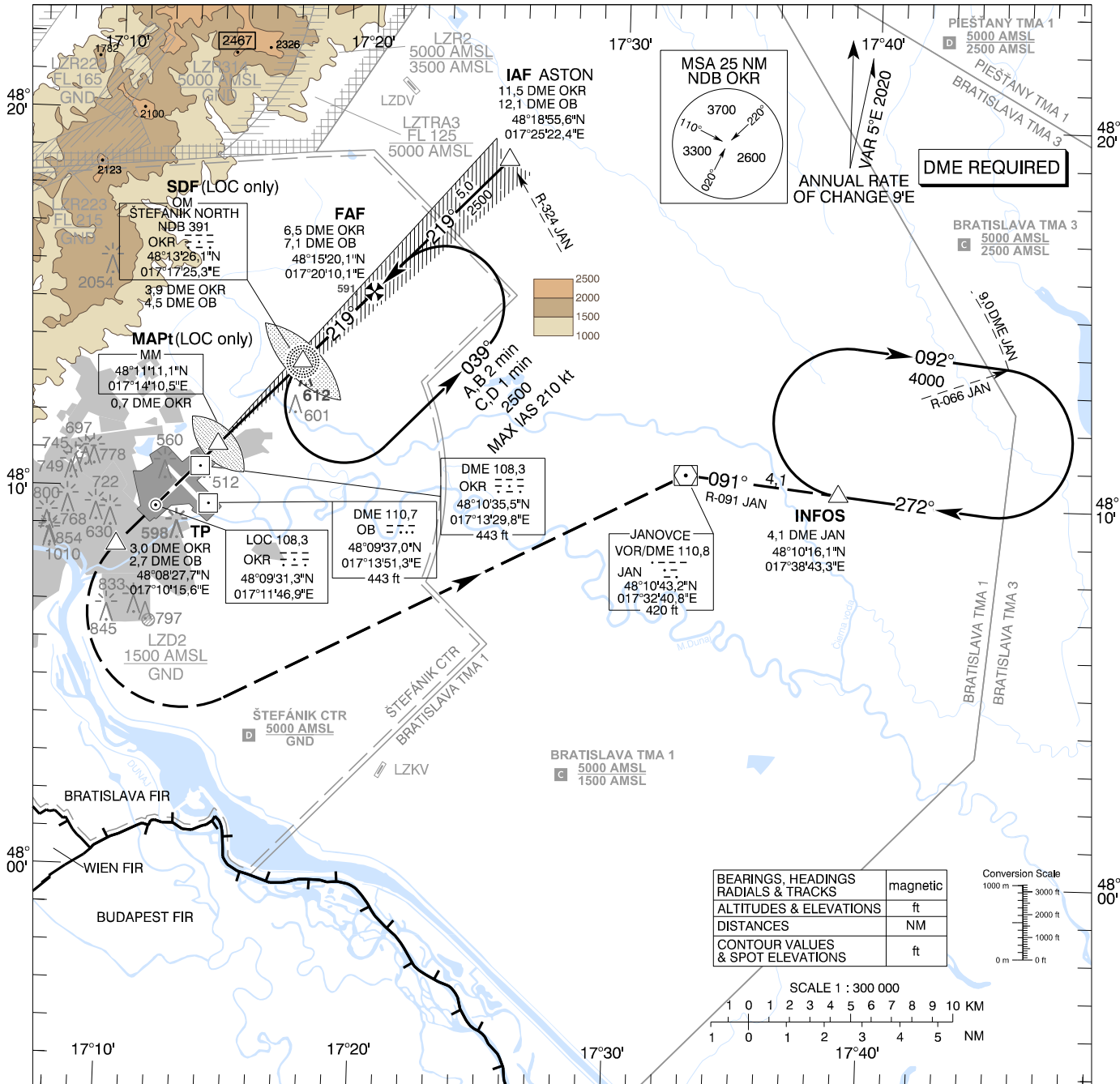
**INSTRUMENT
APPROACH
CHART - ICAO**

TRANSITION ALTITUDE
10 000 ft

AD ELEV 436 - 16 hPa
THR RWY 22 ELEV 430,1 - 16 hPa

ŠTEFÁNIK RADAR 134,925 (118,975)
ŠTEFÁNIK TOWER 118,300 (118,700)
ŠTEFÁNIK ATIS ARRIVAL 133,880

BRATISLAVA/M. R. Štefánik (LZIB)
ILS CAT I or LOC RWY 22
ACFT CAT A/B/C/D



OCA (OCH)		A	B	C	D
Straight-in Approach	CAT I	ft 617 (187)	629 (199)	637 (207)	648 (218)
	LOC without SDF	ft 940 (504)			
	LOC with SDF	ft 860 (424)			
Circling Not authorized WEST of the Airport BTN EXT D RCL 13/31 and 04/22 See the Circling Approach Chart					

DME OKR	NM	6,0	5,0	4,0	3,0	2,0
ALTITUDES	ft	2337	2018	1700	1381	1063

Ground speed	kt	70	90	100	120	140	160	180
FAF - MAPt (5,8 NM)	min:sec	4:57	3:51	3:28	2:53	2:28	2:10	1:55
Rate of descent (5,2%)	ft/min	372	478	531	637	743	849	955

Timing not authorized for defining the MAPt

CHANGES: ELEV of Eurovea II OBST