

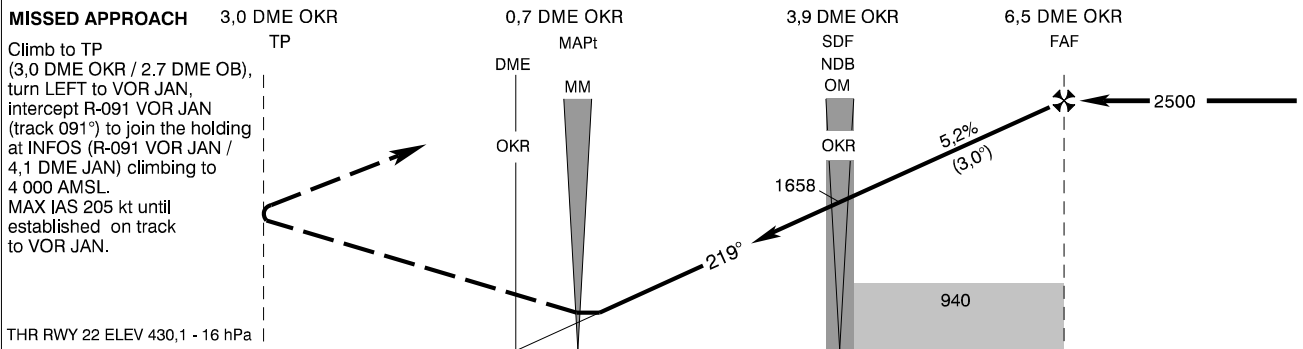
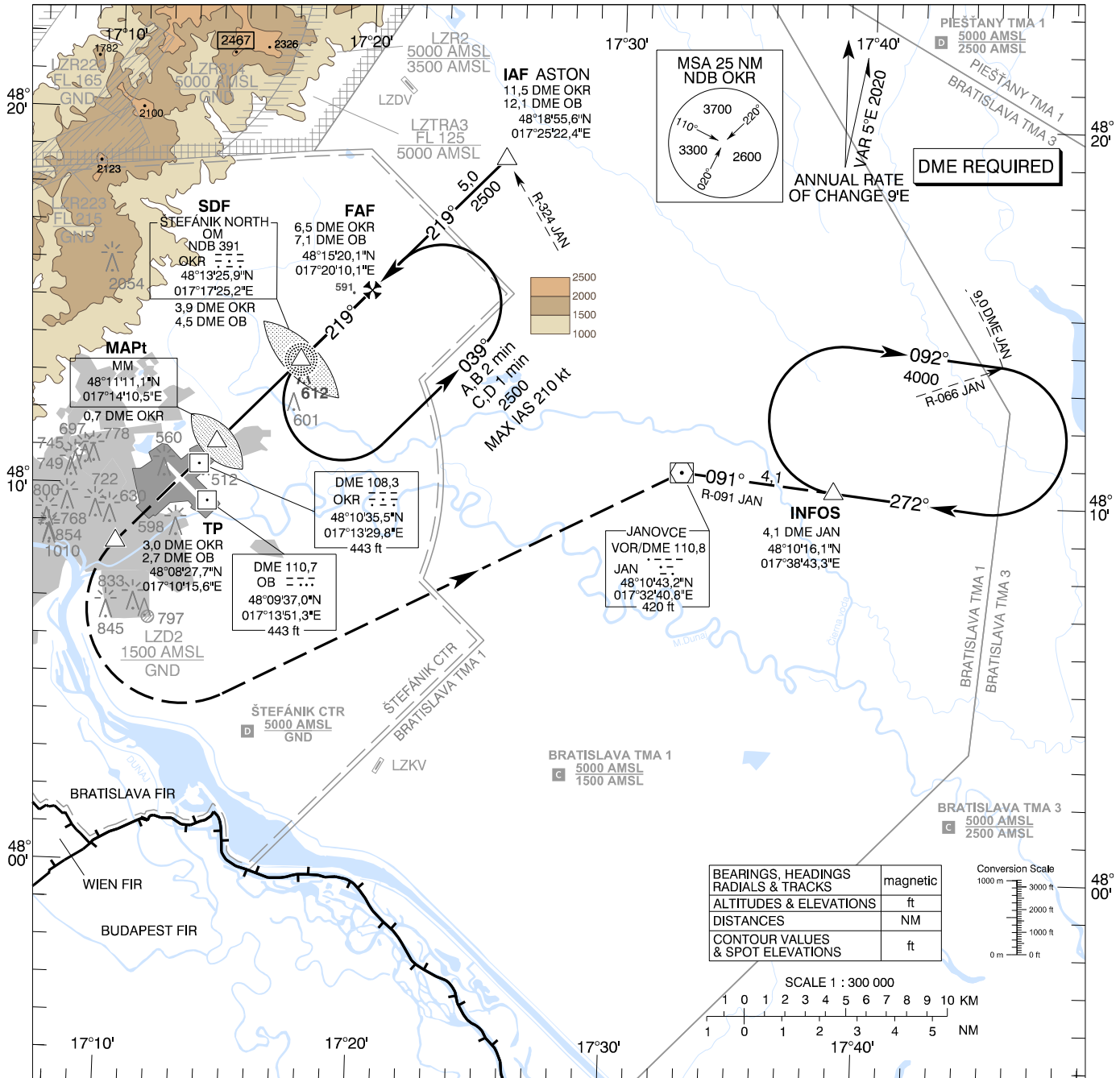
**INSTRUMENT
APPROACH
CHART - ICAO**

TRANSITION ALTITUDE
10 000 ft

AD ELEV 436 - 16 hPa
THR RWY 22 ELEV 430,1 - 16 hPa

ŠTEFÁNIK RADAR 134,925 (118,975)
ŠTEFÁNIK TOWER 118,300 (118,700)
ŠTEFÁNIK ATIS ARRIVAL 133,880

**BRATISLAVA/M. R. Štefánik (LZIB)
NDB RWY 22
ACFT CAT A/B/C/D**



THR RWY 22 ELEV 430,1 - 16 hPa
NM to/from THR RWY 22

OCA (OCH)		A	B	C	D
Straight - In Approach	without SDF	ft	940 (504)		
	with SDF	ft	860 (424)		
Circling Not authorized WEST of the Airport BTN EXTD RCL 13/31 and 04/22 See the Circling Approach Chart					

DME OKR	NM	6,0	5,0	4,0	3,0	2,0
ALTITUDES	ft	2337	2018	1700	1381	1063

Ground speed	kt	70	90	100	120	140	160	180
FAF - MAPt (5,8 NM)	min:sec	4:57	3:51	3:28	2:53	2:29	2:10	1:56
Rate of descent (5,2%)	ft/min	372	478	531	637	743	849	955

Timing not authorized for defining the MAPt

CHANGES: ELEV of Eurovea II / OBST