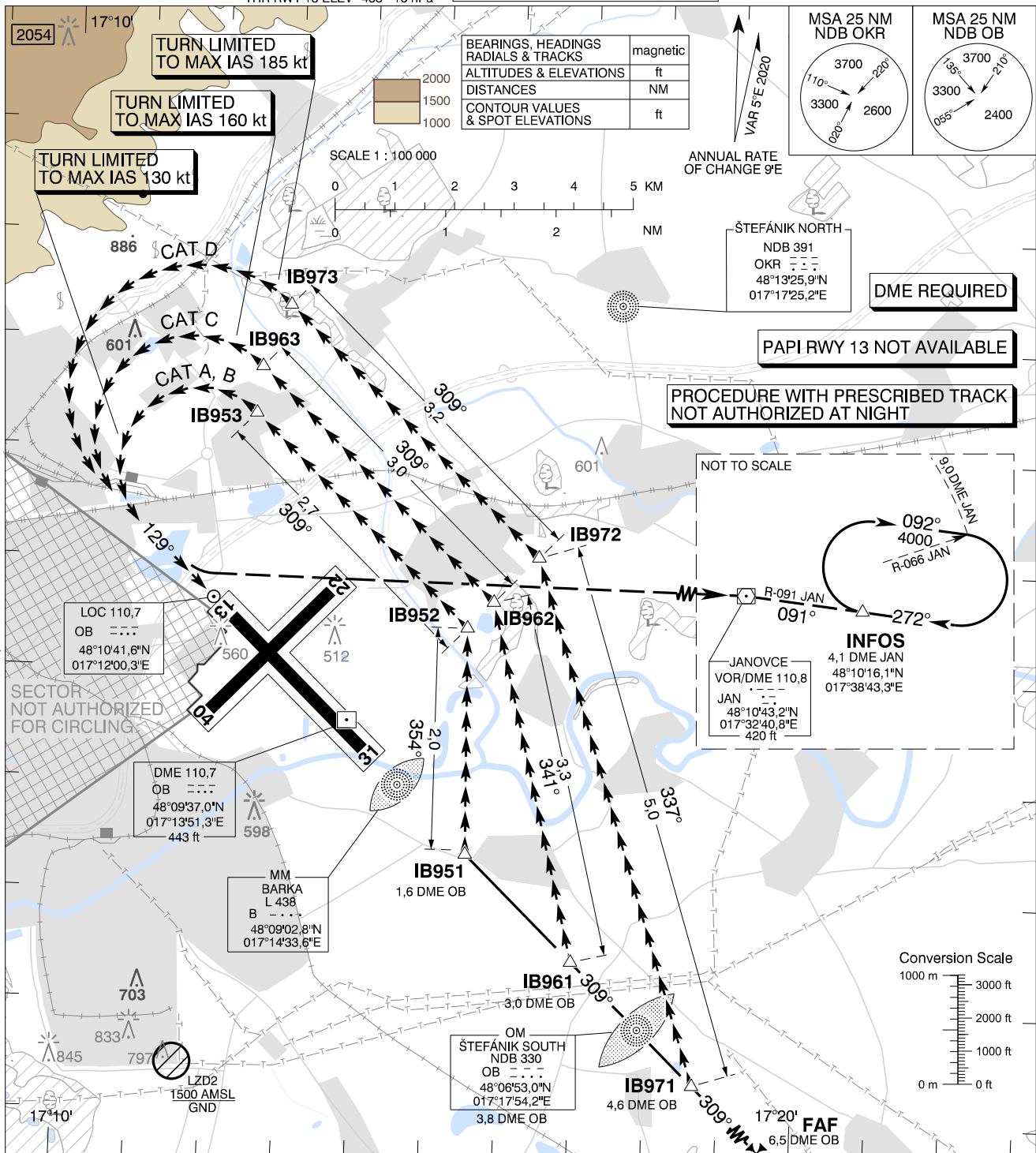


**CIRCLING
APPROACH
CHART**

TRANSITION ALTITUDE
10 000 ft
AD ELEV 436 - 16 hPa
THR RWY 13 ELEV 433 - 16 hPa

ŠTEFÁNIK RADAR 134,925 (118,975)
ŠTEFÁNIK TOWER 118,300 (118,700)
ŠTEFÁNIK ATIS ARRIVAL 133,880

BRATISLAVA/M. R. ŠTEFÁNIK (LZIB)
RWY 31 → 13
ACFT CAT A/B/C/D



MISSED APPROACH

Proceed with LEFT turn to VOR JAN, intercept R-091 VOR JAN (track 091°) to join the holding at INFOS (R-091 VOR JAN / 4,1 DME JAN) climbing to 4 000 AMSL. MAX IAS as prescribed for relevant ACFT CAT until established on track to VOR JAN.

WARNING

In case of missed approach before leaving final approach track, follow instrument missed approach procedure for RWY 31.

PROCEDURE

Execute a published instrument approach procedure to circling OCA(H) for relevant ACFT CAT, proceed VISUALLY approximately onto tracks and distances given on the chart above.

OCA (OCH)		A	B	C	D
WITHOUT PRESCRIBED TRACK	ft	900 (464)	1000 (564)	1970 (1534)	2450 (2014)
WITH PRESCRIBED TRACK	ft	930 (494)		1350 (914)	1880 (1444)
MNM VISIBILITY	m	1900	2800	3700	4600

	IB951	IB952	IB953
CAT A, B	48°08'26,1"N 017°15'30,4"E	48°10'28,7"N 017°15'27,1"E	48°12'22,3"N 017°12'30,9"E
	11,7 DME JAN R-254 JAN	11,5 DME JAN R-264 JAN	13,6 DME JAN R-272 JAN
CAT C	48°07'29,1"N 017°16'58,6"E	48°10'43,2"N 017°15'47,9"E	48°12'47,6"N 017°12'34,7"E
	11,0 DME JAN R-248 JAN	11,3 DME JAN R-265 JAN	13,6 DME JAN R-274 JAN
CAT D	48°06'23,8"N 017°18'39,8"E	48°11'07,9"N 017°16'23,5"E	48°13'21,4"N 017°12'56,2"E
	10,3 DME JAN R-240 JAN	10,9 DME JAN R-267 JAN	13,5 DME JAN R-277 JAN

CHANGES: MAG VAR; MSA; MISSED APPROACH; HOLDING