

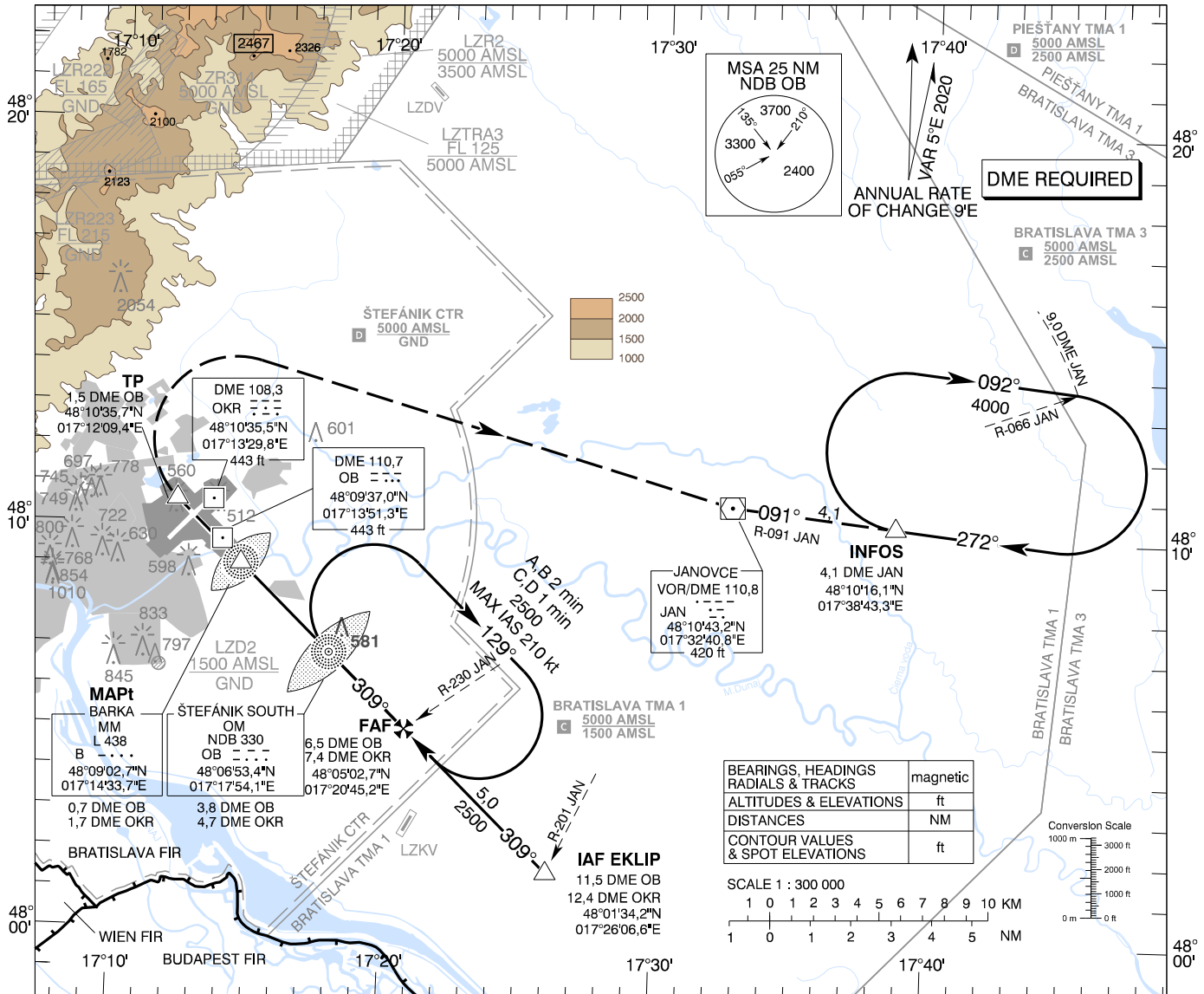
**INSTRUMENT
APPROACH
CHART - ICAO**

TRANSITION ALTITUDE
10 000 ft

AD ELEV 436 -16 hPa
THR RWY 31 ELEV 433,7 -16 hPa

ŠTEFÁNIK RADAR 134,925 (118,975)
ŠTEFÁNIK TOWER 118,300 (118,700)
ŠTEFÁNIK ATIS ARRIVAL 133,880

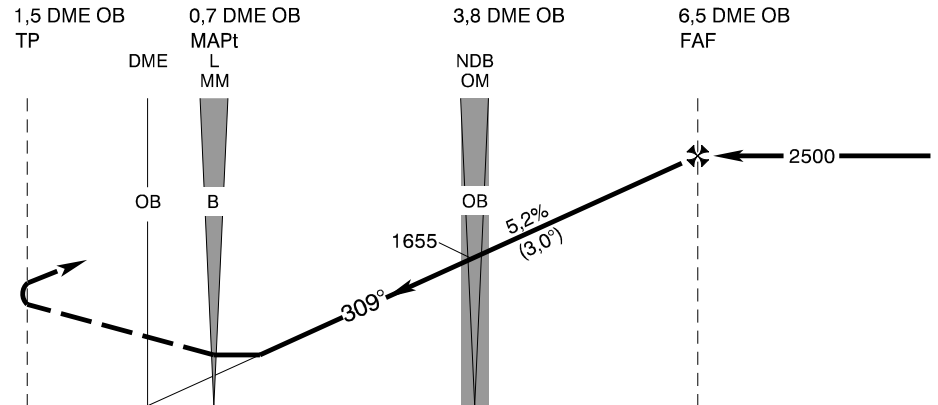
BRATISLAVA/M. R. ŠTEFÁNIK (LZIB)
NDB RWY 31
ACFT CAT A/B/C/D



MISSED APPROACH

Climb to TP (1,5 DME OB), turn RIGHT to VOR JAN, intercept R-091 VOR JAN (track 091°) to join the holding at INFOS (R-091 VOR JAN / 4,1 DME JAN) climbing to 4000 AMSL. MAX IAS 185 kt until established on track to VOR JAN.

ALTERNATE MISSED APPROACH IN CASE OF DME OB UNSERVICEABLE
At MAPt turn RIGHT to VOR JAN, intercept R-091 VOR JAN (track 091°) to join the holding at INFOS (R-091 VOR JAN / 4,1 DME JAN) climbing to 4000 AMSL. MAX IAS 185 kt until established on track to VOR JAN.



THR RWY 31 ELEV 433,7 - 16 hPa

NM to/from THR RWY 31

| OCA (OCH) | | A | B | C | D |
|----------------------|----|---|---|---|---|
| Straight-in Approach | ft | 830 (394) | | | |
| Circling | | Not authorized WEST of the Airport BTN EXTD RCL 13/31 and 04/22 See the Circling Approach Chart | | | |

| DME OB | NM | 6,0 | 5,0 | 4,0 | 3,0 | 2,0 |
|-----------|----|------|------|------|------|------|
| ALTITUDES | ft | 2340 | 2021 | 1703 | 1384 | 1066 |

| Ground speed | kt | 70 | 90 | 100 | 120 | 140 | 160 | 180 |
|------------------------|---------|------|------|------|------|------|------|------|
| FAF - MAPt (5,8 NM) | min:sec | 4:57 | 3:51 | 3:28 | 2:53 | 2:28 | 2:10 | 1:55 |
| Rate of descent (5,2%) | ft/min | 372 | 478 | 531 | 637 | 743 | 849 | 955 |

Timing not authorized for defining the MAPt

CHANGES: ELEV of Eurovea II OBST