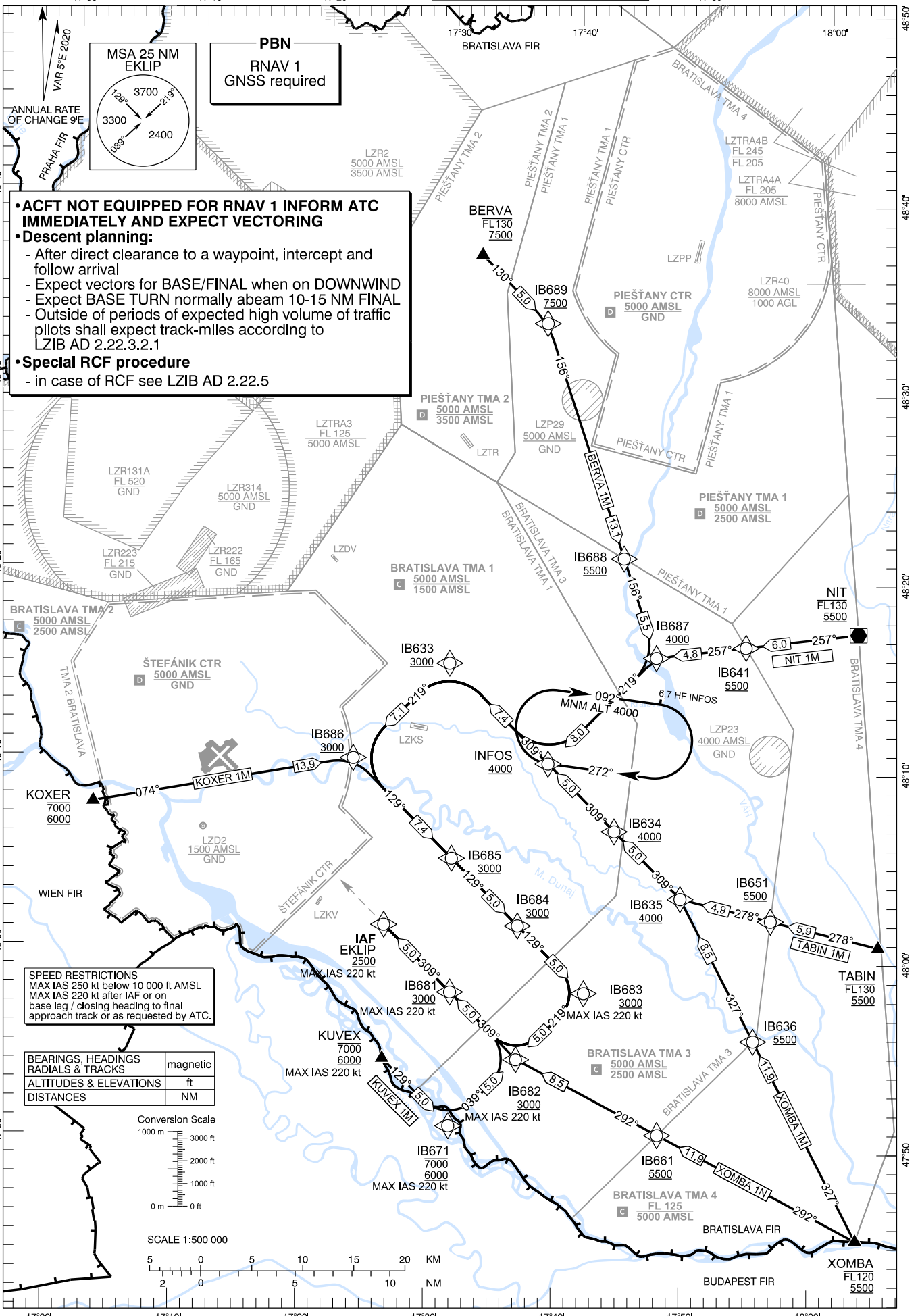


STANDARD ARRIVAL CHART -
INSTRUMENT (STAR) - ICAO

TRANSITION ALTITUDE
10 000 ft

ŠTEFÁNIK RADAR 134,925 (118,975)
ŠTEFÁNIK TOWER 118,300 (118,700)
ŠTEFÁNIK ATIS ARRIVAL 133,880

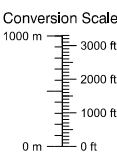
BRATISLAVA/M. R. Štefánik (LZIB)
RNAV 1 STAR RWY 31
ACFT CAT A/B/C/D



• ACFT NOT EQUIPPED FOR RNAV 1 INFORM ATC IMMEDIATELY AND EXPECT VECTORING
• Descent planning:
 - After direct clearance to a waypoint, intercept and follow arrival
 - Expect vectors for BASE/FINAL when on DOWNWIND
 - Expect BASE TURN normally abeam 10-15 NM FINAL
 - Outside of periods of expected high volume of traffic pilots shall expect track-miles according to LZIB AD 2.22.3.2.1
• Special RCF procedure
 - in case of RCF see LZIB AD 2.22.5

SPEED RESTRICTIONS
 MAX IAS 250 kt below 10 000 ft AMSL
 MAX IAS 220 kt after IAF or on base leg / closing heading to final approach track or as requested by ATC.

BEARINGS, HEADINGS RADIALS & TRACKS	magnetic
ALTITUDES & ELEVATIONS	ft
DISTANCES	NM



RNAV 1 STAR Coding Table: BERVA 1M

Path Terminator	Waypoint			Course / Track MAG (True)	DIST	Turn Direction	Constraints		Navigation Specification
	Identifier	Flyover	Coordinates				Level	Speed	
IF	BERVA	NO	48°37'03,25"N 017°32'28,20"E	-	-	-	FL130- A7500+	-	RNAV 1
TF	IB689	NO	48°33'31,83"N 017°37'48,60"E	130° (134,8°)	5,0 NM	-	A7500+	-	RNAV 1
TF	IB688	NO	48°21'11,89"N 017°44'20,24"E	156° (160,6°)	13,1 NM	RIGHT	A5500+	-	RNAV 1
TF	IB687	NO	48°15'59,45"N 017°47'04,59"E	156° (160,6°)	5,5 NM	-	A4000+	-	RNAV 1
TF	INFOS	NO	48°10'16,10"N 017°38'43,31"E	219° (224,3°)	8,0 NM	RIGHT	A4000+	-	RNAV 1
TF	IB633	NO	48°15'26,93"N 017°30'44,94"E	309° (314,2°)	7,4 NM	RIGHT	A3000+	-	RNAV 1
TF	IB686	NO	48°10'19,74"N 017°23'19,58"E	219° (224,1°)	7,1 NM	LEFT	A3000+	-	RNAV 1
TF	IB685	NO	48°05'09,43"N 017°31'17,91"E	129° (134,1°)	7,4 NM	LEFT	A3000+	-	RNAV 1
TF	IB684	NO	48°01'40,47"N 017°36'38,61"E	129° (134,2°)	5,0 NM	-	A3000+	-	RNAV 1
TF	IB683	NO	47°58'11,27"N 017°41'58,58"E	129° (134,2°)	5,0 NM	-	A3000+	K220-	RNAV 1
TF	IB682	NO	47°54'36,52"N 017°36'47,23"E	219° (224,3°)	5,0 NM	RIGHT	A3000+	K220-	RNAV 1
TF	IB681	NO	47°58'05,48"N 017°31'27,27"E	309° (314,2°)	5,0 NM	RIGHT	A3000+	K220-	RNAV 1
TF	EKLIP	NO	48°01'34,19"N 017°26'06,60"E	309° (314,2°)	5,0 NM	-	A2500+	K220-	RNAV 1

RNAV 1 STAR Coding Table: NIT 1M / NITRA 1M

Path Terminator	Waypoint			Course / Track MAG (True)	DIST	Turn Direction	Constraints		Navigation Specification
	Identifier	Flyover	Coordinates				Level	Speed	
IF	NITRA	NO	48°17'25,57"N 018°03'02,30"E	-	-	-	FL130- A5500+	-	RNAV 1
TF	IB641	NO	48°16'37,96"N 017°54'09,68"E	257° (262,4°)	6,0 NM	-	A5500+	-	RNAV 1
TF	IB687	NO	48°15'59,45"N 017°47'04,59"E	257° (262,3°)	4,8 NM	-	A4000+	-	RNAV 1
TF	INFOS	NO	48°10'16,10"N 017°38'43,31"E	219° (224,3°)	8,0 NM	LEFT	A4000+	-	RNAV 1
TF	IB633	NO	48°15'26,93"N 017°30'44,94"E	309° (314,2°)	7,4 NM	RIGHT	A3000+	-	RNAV 1
TF	IB686	NO	48°10'19,74"N 017°23'19,58"E	219° (224,1°)	7,1 NM	LEFT	A3000+	-	RNAV 1
TF	IB685	NO	48°05'09,43"N 017°31'17,91"E	129° (134,1°)	7,4 NM	LEFT	A3000+	-	RNAV 1
TF	IB684	NO	48°01'40,47"N 017°36'38,61"E	129° (134,2°)	5,0 NM	-	A3000+	-	RNAV 1
TF	IB683	NO	47°58'11,27"N 017°41'58,58"E	129° (134,2°)	5,0 NM	-	A3000+	K220-	RNAV 1
TF	IB682	NO	47°54'36,52"N 017°36'47,23"E	219° (224,3°)	5,0 NM	RIGHT	A3000+	K220-	RNAV 1
TF	IB681	NO	47°58'05,48"N 017°31'27,27"E	309° (314,2°)	5,0 NM	RIGHT	A3000+	K220-	RNAV 1
TF	EKLIP	NO	48°01'34,19"N 017°26'06,60"E	309° (314,2°)	5,0 NM	-	A2500+	K220-	RNAV 1

RNAV 1 STAR Coding Table: TABIN 1M

Path Terminator	Waypoint			Course / Track MAG (True)	DIST	Turn Direction	Constraints		Navigation Specification
	Identifier	Flyover	Coordinates				Level	Speed	
IF	TABIN	NO	48°00'54,51"N 018°05'03,94"E	-	-	-	FL130- A5500+	-	RNAV 1
TF	IB651	NO	48°02'12,31"N 017°56'33,61"E	278° (282,9°)	5,9 NM	-	A5500+	-	RNAV 1
TF	IB635	NO	48°03'17,25"N 017°49'24,04"E	278° (282,7°)	4,9 NM	-	A4000+	-	RNAV 1
TF	IB634	NO	48°06'46,80"N 017°44'04,04"E	309° (314,4°)	5,0 NM	RIGHT	A4000+	-	RNAV 1
TF	INFOS	NO	48°10'16,10"N 017°38'43,31"E	309° (314,3°)	5,0 NM	-	A4000+	-	RNAV 1
TF	IB633	NO	48°15'26,93"N 017°30'44,94"E	309° (314,2°)	7,4 NM	-	A3000+	-	RNAV 1
TF	IB686	NO	48°10'19,74"N 017°23'19,58"E	219° (224,1°)	7,1 NM	LEFT	A3000+	-	RNAV 1
TF	IB685	NO	48°05'09,43"N 017°31'17,91"E	129° (134,1°)	7,4 NM	LEFT	A3000+	-	RNAV 1
TF	IB684	NO	48°01'40,47"N 017°36'38,61"E	129° (134,2°)	5,0 NM	-	A3000+	-	RNAV 1
TF	IB683	NO	47°58'11,27"N 017°41'58,58"E	129° (134,2°)	5,0 NM	-	A3000+	K220-	RNAV 1
TF	IB682	NO	47°54'36,52"N 017°36'47,23"E	219° (224,3°)	5,0 NM	RIGHT	A3000+	K220-	RNAV 1
TF	IB681	NO	47°58'05,48"N 017°31'27,27"E	309° (314,2°)	5,0 NM	RIGHT	A3000+	K220-	RNAV 1
TF	EKLIP	NO	48°01'34,19"N 017°26'06,60"E	309° (314,2°)	5,0 NM	-	A2500+	K220-	RNAV 1

RNAV 1 STAR Coding Table: KUVEX 1M

Path Terminator	Waypoint			Course / Track MAG (True)	DIST	Turn Direction	Constraints		Navigation Specification
	Identifier	Flyover	Coordinates				Level	Speed	
IF	KUVEX	NO	47°54'30,00"N 017°26'15,00"E	-	-	-	A7000- A6000+	K220-	RNAV 1
TF	IB671	NO	47°51'01,53"N 017°31'36,60"E	129° (133,9°)	5,0 NM	-	A7000- A6000+	K220-	RNAV 1
TF	IB682	NO	47°54'36,52"N 017°36'47,23"E	039° (044,2°)	5,0 NM	LEFT	A3000+	K220-	RNAV 1
TF	IB681	NO	47°58'05,48"N 017°31'27,27"E	309° (314,2°)	5,0 NM	LEFT	A3000+	K220-	RNAV 1
TF	EKLIP	NO	48°01'34,19"N 017°26'06,60"E	309° (314,2°)	5,0 NM	-	A2500+	K220-	RNAV 1

RNAV 1 STAR Coding Table: XOMBA 1M

Path Terminator	Waypoint			Course / Track MAG (True)	DIST	Turn Direction	Constraints		Navigation Specification
	Identifier	Flyover	Coordinates				Level	Speed	
IF	XOMBA	NO	47°45'23,85"N 018°03'43,06"E	-	-	-	FL120- A5500+	-	RNAV 1
TF	IB636	NO	47°55'50,83"N 017°55'22,69"E	327° (331,8°)	11,9 NM	-	A5500+	-	RNAV 1
TF	IB635	NO	48°03'17,25"N 017°49'24,04"E	327° (331,7°)	8,5 NM	-	A4000+	-	RNAV 1
TF	IB634	NO	48°06'46,80"N 017°44'04,04"E	309° (314,4°)	5,0 NM	LEFT	A4000+	-	RNAV 1
TF	INFOS	NO	48°10'16,10"N 017°38'43,31"E	309° (314,3°)	5,0 NM	-	A4000+	-	RNAV 1
TF	IB633	NO	48°15'26,93"N 017°30'44,94"E	309° (314,2°)	7,4 NM	-	A3000+	-	RNAV 1
TF	IB686	NO	48°10'19,74"N 017°23'19,58"E	219° (224,1°)	7,1 NM	LEFT	A3000+	-	RNAV 1
TF	IB685	NO	48°05'09,43"N 017°31'17,91"E	129° (134,1°)	7,4 NM	LEFT	A3000+	-	RNAV 1
TF	IB684	NO	48°01'40,47"N 017°36'38,61"E	129° (134,2°)	5,0 NM	-	A3000+	-	RNAV 1
TF	IB683	NO	47°58'11,27"N 017°41'58,58"E	129° (134,2°)	5,0 NM	-	A3000+	K220-	RNAV 1
TF	IB682	NO	47°54'36,52"N 017°36'47,23"E	219° (224,3°)	5,0 NM	RIGHT	A3000+	K220-	RNAV 1
TF	IB681	NO	47°58'05,48"N 017°31'27,27"E	309° (314,2°)	5,0 NM	RIGHT	A3000+	K220-	RNAV 1
TF	EKLIP	NO	48°01'34,19"N 017°26'06,60"E	309° (314,2°)	5,0 NM	-	A2500+	K220-	RNAV 1

RNAV 1 STAR Coding Table: XOMBA 1N

Path Terminator	Waypoint			Course / Track MAG (True)	DIST	Turn Direction	Constraints		Navigation Specification
	Identifier	Flyover	Coordinates				Level	Speed	
IF	XOMBA	NO	47°45'23,85"N 018°03'43,06"E	-	-	-	FL120- A5500+	-	RNAV 1
TF	IB661	NO	47°50'47,32"N 017°48'00,78"E	292° (297,1°)	11,9 NM	-	A5500+	-	RNAV 1
TF	IB682	NO	47°54'36,52"N 017°36'47,23"E	292° (296,9°)	8,5 NM	-	A3000+	K220-	RNAV 1
TF	IB681	NO	47°58'05,48"N 017°31'27,27"E	309° (314,2°)	5,0 NM	RIGHT	A3000+	K220-	RNAV 1
TF	EKLIP	NO	48°01'34,19"N 017°26'06,60"E	309° (314,2°)	5,0 NM	-	A2500+	K220-	RNAV 1

RNAV 1 STAR Coding Table: KOXER 1M									
Path Terminator	Waypoint			Course / Track MAG (True)	DIST	Turn Direction	Constraints		Navigation Specification
	Identifier	Flyover	Coordinates				Level	Speed	
IF	KOXER	NO	48°07'39.00"N 017°02'54.00"E	-	-	-	A7000- A6000+	-	RNAV 1
TF	IB686	NO	48°10'19,74"N 017°23'19,58"E	074° (078,8°)	13,9 NM	-	A3000+	-	RNAV 1
TF	IB685	NO	48°05'09,43"N 017°31'17,91"E	129° (134,1°)	7,4 NM	RIGHT	A3000+	-	RNAV 1
TF	IB684	NO	48°01'40,47"N 017°36'38,61"E	129° (134,2°)	5,0 NM	-	A3000+	-	RNAV 1
TF	IB683	NO	47°58'11,27"N 017°41'58,58"E	129° (134,2°)	5,0 NM	-	A3000+	K220-	RNAV 1
TF	IB682	NO	47°54'36,52"N 017°36'47,23"E	219° (224,3°)	5,0 NM	RIGHT	A3000+	K220-	RNAV 1
TF	IB681	NO	47°58'05,48"N 017°31'27,27"E	309° (314,2°)	5,0 NM	RIGHT	A3000+	K220-	RNAV 1
TF	EKLIP	NO	48°01'34,19"N 017°26'06,60"E	309° (314,2°)	5,0 NM	-	A2500+	K220-	RNAV 1

RNAV Holding							
Holding Point	Inbound Track MAG (True)	Turn Direction	MAX IAS	Minimum Holding Altitude	Time	DIST HF	Remarks
INFOS	272° (276,5°)	RIGHT	-	A4000	-	6,7 NM	-