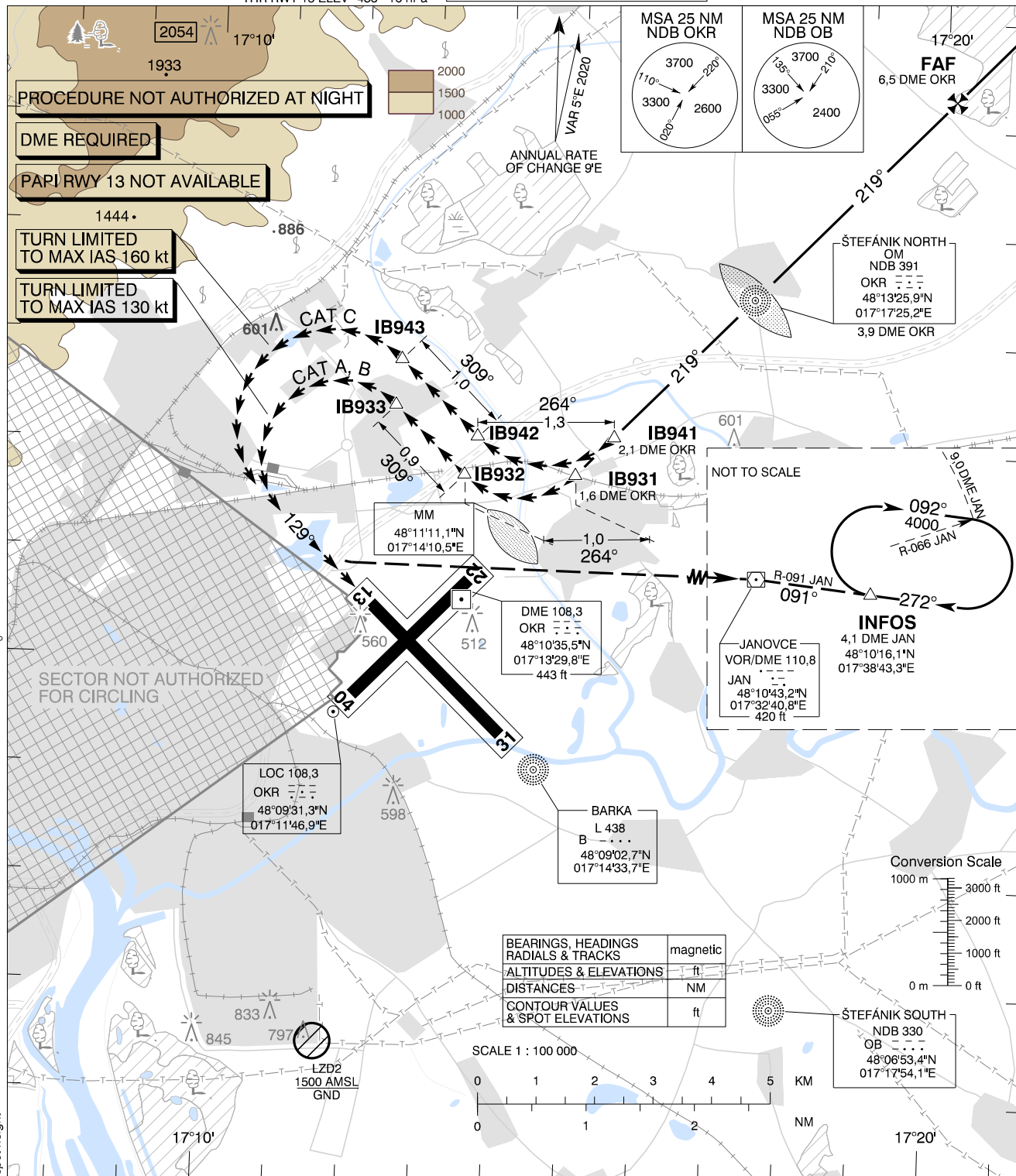


**CIRCLING
APPROACH
CHART**

TRANSITION ALTITUDE
10 000 ft
AD ELEV 436 - 16 hPa
THR RWY 13 ELEV 433 - 16 hPa

ŠTEFÁNIK RADAR 134,925 (118,975)
ŠTEFÁNIK TOWER 118,300 (118,700)
ŠTEFÁNIK ATIS ARRIVAL 133,880

BRATISLAVA/M. R. ŠTEFÁNIK (LZIB)
RWY 22 → 13
ACFT CAT A/B/C



MISSED APPROACH

Proceed with LEFT turn to VOR JAN, intercept R-091 VOR JAN (track 091°) to join the holding at INFOS (R-091 VOR JAN / 4,1 DME JAN) climbing to 4 000 AMSL.
MAX IAS as prescribed for relevant ACFT CAT until established on track to VOR JAN.

WARNING

In case of missed approach before leaving final approach track, follow instrument missed approach procedure for RWY 22.

PROCEDURE

Execute a published instrument approach procedure to circling OCA(H) for relevant ACFT CAT, proceed VISUALLY approximately onto tracks and distances given on the chart above.

OCA (OCH)		A	B	C
WITH PRESCRIBED TRACK	ft	930 (494)		1350 (914)
MNM VISIBILITY	m	1900	2800	3700

	IB931	IB932	IB933
CAT A, B	48°11'45,9"N 017°15'00,8"E	48°11'44,8"N 017°13'29,1"E	48°12'22,3"N 017°12'30,9"E
	11,9 DME JAN R-270 JAN	12,9 DME JAN R-270 JAN	13,6 DME JAN R-272 JAN
CAT C	48°12'07,5"N 017°15'32,0"E	48°12'06,2"N 017°13'39,1"E	48°12'47,6"N 017°12'34,7"E
	11,6 DME JAN R-272 JAN	12,8 DME JAN R-271 JAN	13,6 DME JAN R-274 JAN

CHANGES: MAG VAR; MSA; MISSED APPROACH; HOLDING; SPOT HEIGHT