

**INSTRUMENT
APPROACH
CHART - ICAO**

TRANSITION ALTITUDE
10 000 ft

AD ELEV 436 - 16 hPa
THR RWY 22 ELEV 430,1 - 16 hPa

ŠTEFÁNIK RADAR 134,925 (118,975)

ŠTEFÁNIK TOWER 118,300 (118,700)

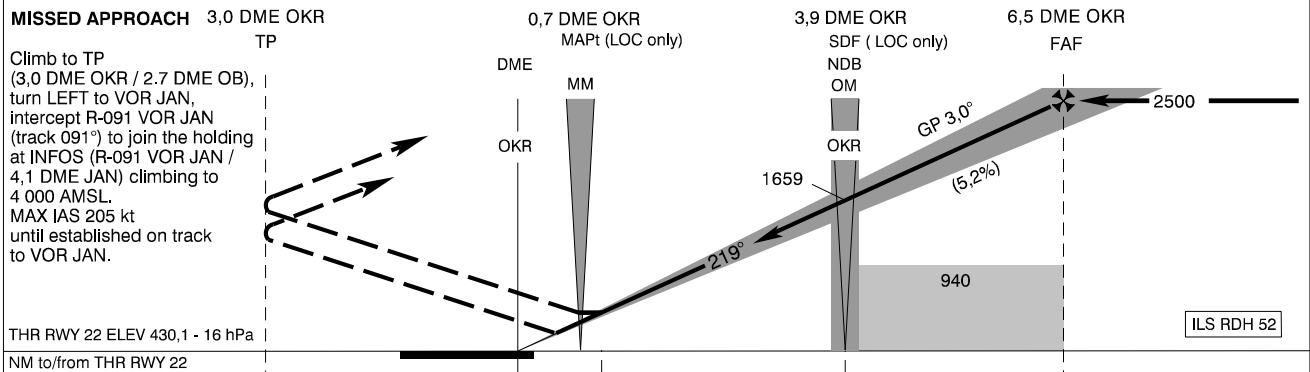
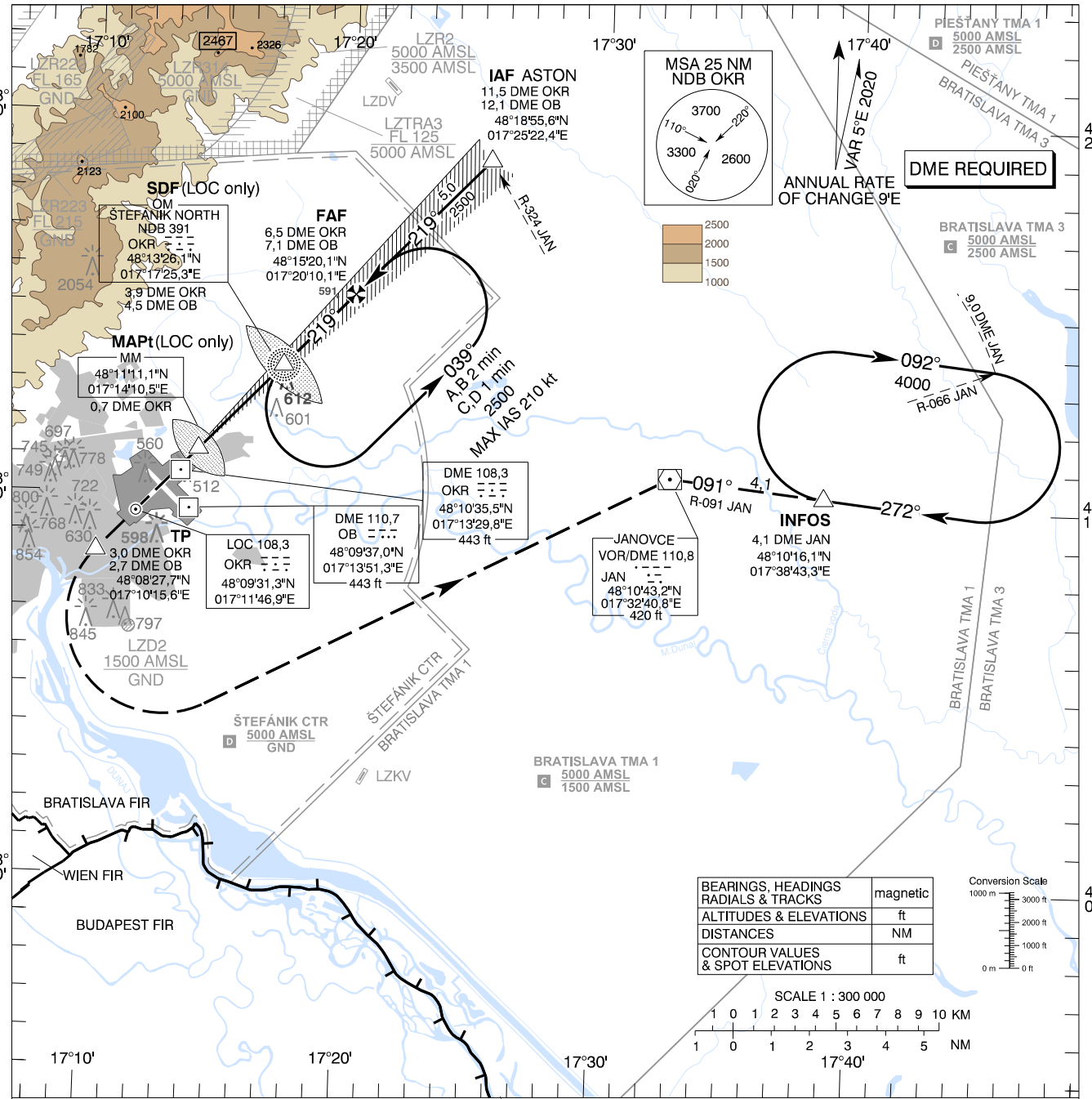
ŠTEFÁNIK ATIS ARRIVAL 133,880

BRATISLAVA/M. R. ŠTEFÁNIK (LZIB)

ILS CAT I or LOC RWY 22

ACFT CAT A/B/C/D

CHANGES: BRATISLAVA TMA 1 and PIEŠŤANY TMA 3 added; MAG. VAR. VAR. HOLDING; MSA; OCA (OCH); MISSED APPROACH; LZR2, LZTRA3; scale; obstacles; IAF



MISSED APPROACH		3,0 DME OKR	0,7 DME OKR	3,9 DME OKR	6,5 DME OKR			
		TP	MAPt (LOC only)	SDF (LOC only)	FAF			
Climb to TP (3,0 DME OKR / 2,7 DME OB), turn LEFT to VOR JAN, intercept R-091 VOR JAN (track 091°) to join the holding at INFOS (R-091 VOR JAN / 4,1 DME JAN) climbing to 4 000 AMSL. MAX IAS 205 kt until established on track to VOR JAN.								
THR RWY 22 ELEV 430,1 - 16 hPa								
NM to/from THR RWY 22								
		5	0	5	5			
OCA (OCH)		A	B	C	D			
Straight-in Approach	CAT I	ft 617 (187)	629 (199)	637 (207)	648 (218)			
	LOC without SDF	ft 940 (504)						
	LOC with SDF	ft 860 (424)						
Circling		Not authorized WEST of the Airport BTN EXT D RCL 13/31 and 04/22 See the Circling Approach Chart						
DME OKR		NM 6,0	5,0	4,0	3,0	2,0		
ALTITUDES		ft 2337	2018	1700	1381	1063		
Ground speed		kt 70	90	100	120	140	160	180
FAF - MAPt (5,8 NM)		min:sec 4:57	3:51	3:28	2:53	2:28	2:10	1:55
Rate of descent (5,2%)		ft/min 372	478	531	637	743	849	955
Timing not authorized for defining the MAPt								