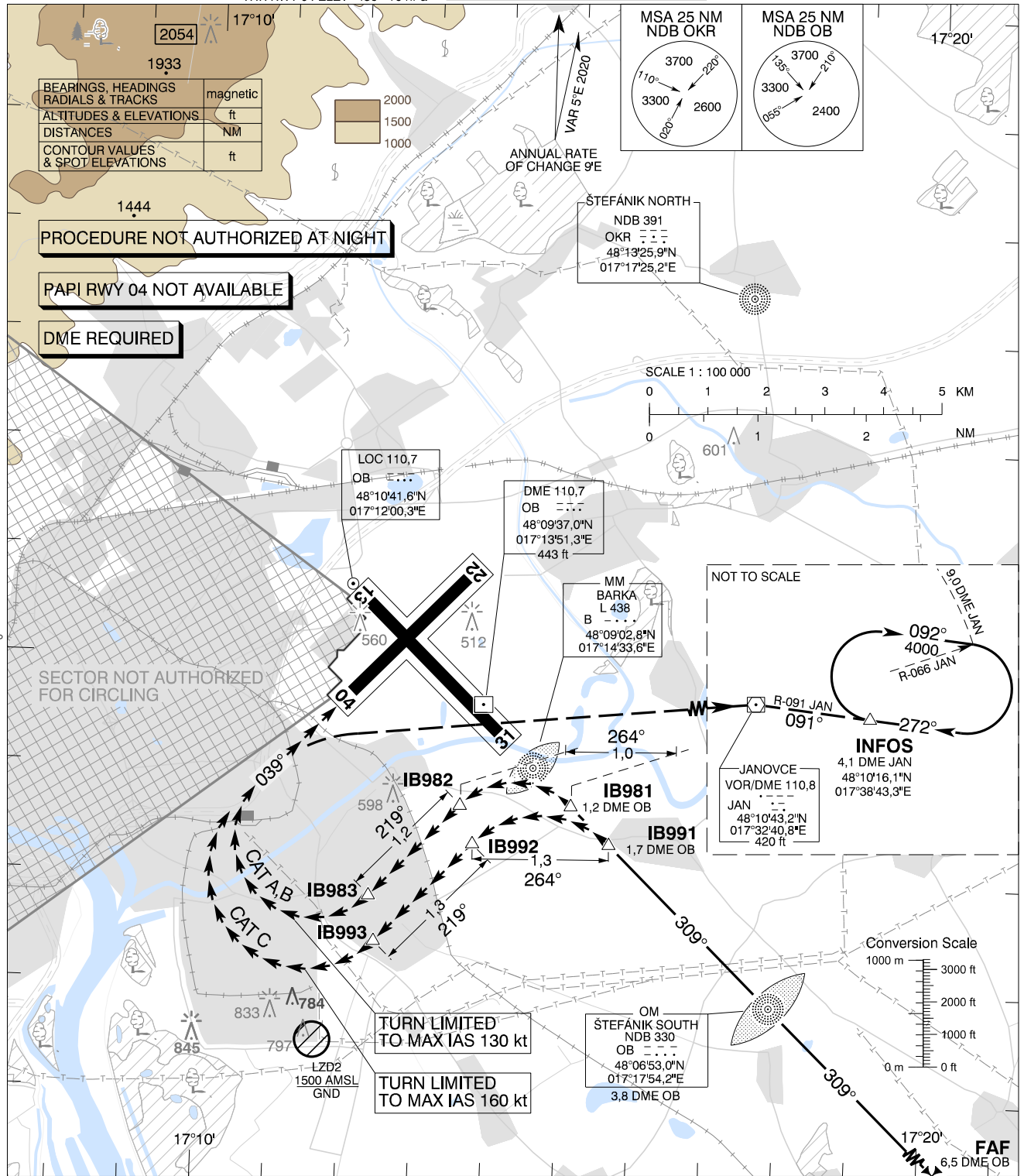


**CIRCLING
APPROACH
CHART**

TRANSITION ALTITUDE
10 000 ft
AD ELEV 436 - 16 hPa
THR RWY 04 ELEV 436 - 16 hPa

ŠTEFÁNIK RADAR 134,925 (118,975)
ŠTEFÁNIK TOWER 118,300 (118,700)
ŠTEFÁNIK ATIS ARRIVAL 133,880

BRATISLAVA/M. R. Štefánik (LZIB)
RWY 31 → 04
ACFT CAT A/B/C



PROCEDURE NOT AUTHORIZED AT NIGHT

PAPI RWY 04 NOT AVAILABLE

DME REQUIRED

SECTOR NOT AUTHORIZED FOR CIRCLING

MISSED APPROACH

Proceed with RIGHT turn to VOR JAN, intercept R-091 VOR JAN (track 091°) to join the holding at INFOS (R-091 VOR JAN / 4,1 DME JAN) climbing to 4 000 AMSL. MAX IAS as prescribed for relevant ACFT CAT until established on track to VOR JAN.

WARNING

In case of missed approach before leaving final approach track, follow instrument missed approach procedure for RWY 31.

PROCEDURE

Execute a published instrument approach procedure to circling OCA(H) for relevant ACFT CAT, proceed VISUALLY approximately onto tracks and distances given on the chart above.

OCA (OCH)	A	B	C
WITH PRESCRIBED TRACK	ft	1080 (644)	1240 (804)
MNM VISIBILITY	m	1900	2800

	IB981	IB982	IB983
CAT A, B	48°08'41,9"N 017°15'05,9"E	48°08'40,8"N 017°13'34,2"E	48°07'49,7"N 017°12'20,7"E
	11,9 DME JAN R-255 JAN	13,0 DME JAN R-256 JAN	13,9 DME JAN R-253 JAN
CAT C	48°08'21,1"N 017°15'38,2"E	48°08'19,7"N 017°13'45,4"E	48°07'24,5"N 017°12'25,9"E
	11,7 DME JAN R-253 JAN	12,9 DME JAN R-255 JAN	14,0 DME JAN R-251 JAN

CHANGES: MAG VAR; MSA; MISSED APPROACH; HOLDING