

INSTRUMENT APPROACH CHART - ICAO

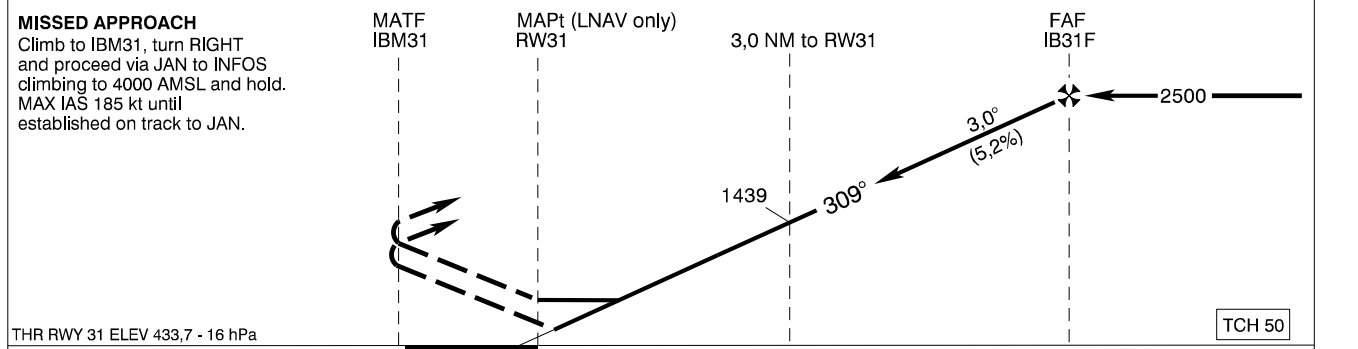
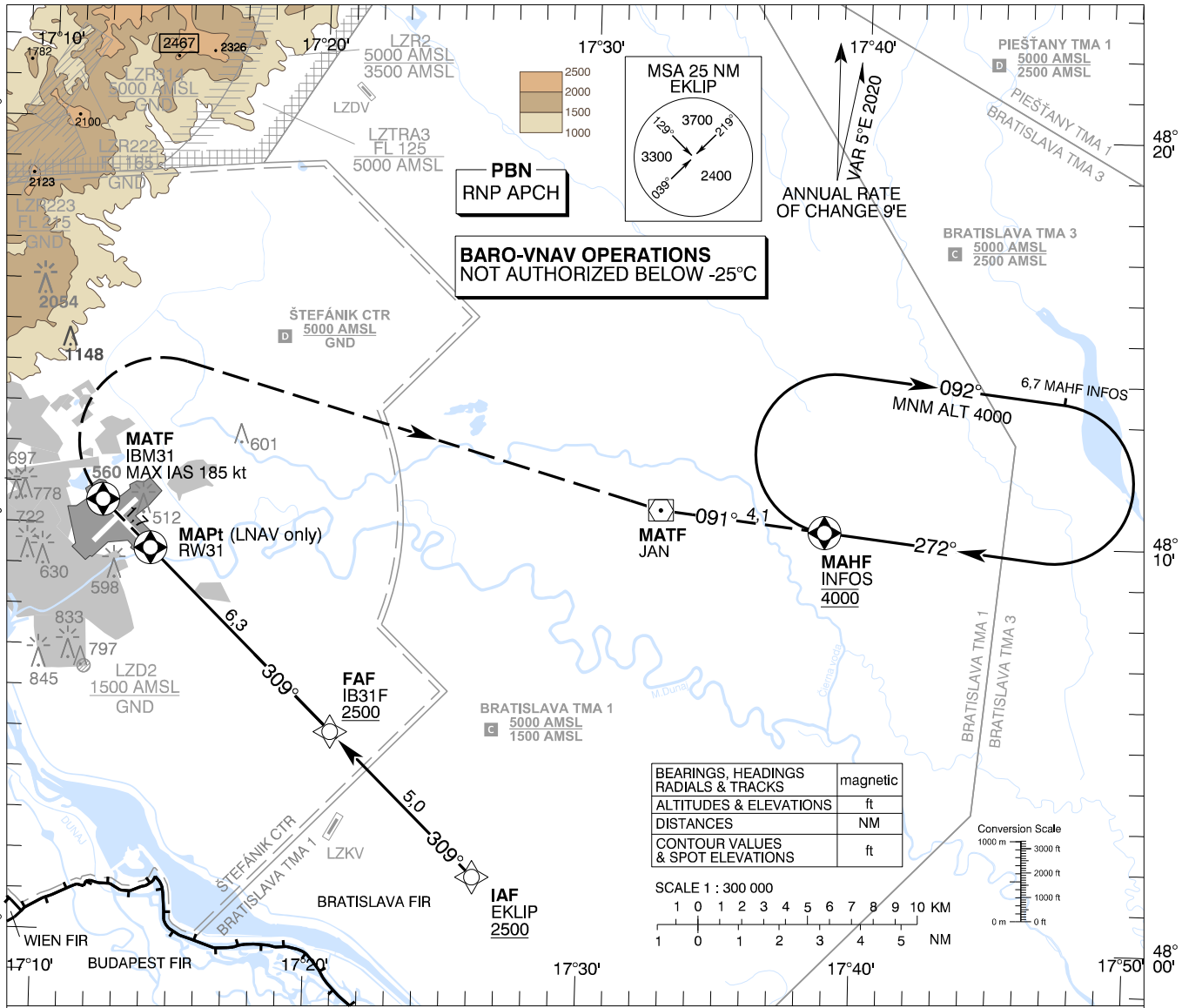
TRANSITION ALTITUDE
10 000 ft
AD ELEV 436 - 16 hPa
THR RWY 31 ELEV 433,7 - 16 hPa

ŠTEFÁNIK RADAR 134,925 (118,975)
ŠTEFÁNIK TOWER 118,300 (118,700)
ŠTEFÁNIK ATIS ARRIVAL 133,880

EGNOS
CH 57702
E31A

**BRATISLAVA/M. R. Štefánik (LZIB)
RNP RWY 31
ACFT CAT A/B/C/D**

CHANGES: MAG VAR; HOLDING; MISSED APPROACH; OCA (OCH); BRATISLAVA TMA 1 and PIEŠŤANY TMA 1 restaged; BRATISLAVA TMA 3 added; LZTR02, LZTR03 renamed to LZR2, LZTR03



OCA (OCH)		ASC	A	B	C	D
Straight-In Approach	LNAV	2,5% ft	1330 (894)			
		4,0% ft	870 (434)			
	2,5% ft	1116 (682)	1128 (694)	1136 (702)	1147 (713)	
	4,0% ft	741 (307)	753 (319)	761 (327)	772 (338)	
LNAV/VNAV	2,5% ft	748 (314)	760 (326)	768 (334)	779 (345)	
	4,0% ft	596 (162)	608 (174)	616 (182)	627 (193)	
LPV	2,5% ft	748 (314)	760 (326)	768 (334)	779 (345)	
	4,0% ft	596 (162)	608 (174)	616 (182)	627 (193)	
Circling	Not authorized WEST of the Airport BTN EXT D RCL 13/31 and 04/22 See the Circling Approach Chart					

Dist RWY31 (THR) NM	6,0	5,0	4,0	3,0	2,0
ALTITUDES ft	2394	2076	1757	1439	1121

Ground speed kt	70	90	100	120	140	160	180
IB31F - RW31 (6,3 NM) min:sec	5:26	4:13	3:48	3:10	2:43	2:22	2:07
Rate of descent (5,2%) ft/min	372	478	531	637	743	849	955

Timing not authorized for defining the MAPt

Instrument Approach Procedure Coding Table: Bratislava/M. R. Štefánik RNP RWY 31

Path Terminator	Waypoint				Course / Track MAG (True)	DIST	Turn Direction	Constraints		Navigation Specification
	Identifier	Type	Flyover	Coordinates				Level	Speed	
IF	EKLIP	IAF	NO	48°01'34,19"N 017°26'06,60"E	-	-	-	A2500+	-	RNP APCH
TF	IB31F	FAF	NO	48°05'02,65"N 017°20'45,19"E	309° (314,1°)	5,0 NM	-	A2500+	-	RNP APCH
TF	RW31	MAPt	YES	48°09'26,29"N 017°13'57,10"E	309° (314,0°)	6,3 NM	-	-	-	RNP APCH
TF	IBM31	MATF	YES	48°10'35,68"N 017°12'09,39"E	309° (313,9°)	1,7 NM	-	-	K185-	RNP APCH
DF	JAN	MATF	NO	48°10'43,17"N 017°32'40,76"E	-	-	RIGHT	-	-	RNP APCH
TF	INFOS	MAHF	YES	48°10'16,10"N 017°38'43,31"E	091° (096,3°)	4,1 NM	LEFT	A4000	-	RNP APCH
RNAV Holding										
Holding Point	Inbound Track MAG (True)	Turn Direction	MAX IAS	Minimum Holding Altitude	Time	DIST MAHF	Remarks			
INFOS	272° (276,5°)	RIGHT	-	A4000	-	6,7 NM	-			

SBAS FAS Data Block Coding Table Bratislava/M.R. Štefánik RNP RWY 31

Input data	
Operation Type	0
SBAS Provider	1 (EGNOS)
Airport Identifier	LZIB
Runway	31
Runway Letter	0 (None)
Approach Performance Designator	0
Route Indicator	
Reference Path Data Selector	0
Reference Path Identifier	E31A
LTP/FTP Latitude	480926.2850N
LTP/FTP Longitude	0171357.1020E
LTP/FTP Ellipsoidal Height (metres)	175.8
FPAP Latitude	481034.7090N
Delta FPAP Latitude (seconds)	68.4240
FPAP Longitude	0171210.8935E
Delta FPAP Longitude (seconds)	-106.2085
Threshold Crossing Height	15.2
TCH Units Selector	1 (meters)
Glidepath Angle (degrees)	3.00
Course Width (metres)	105.00
Length Offset (metres)	104
HAL (metres)	40.0
VAL (metres)	35.0
Output data	
Data Block	10 02 09 1A 0C 1F 00 00 01 31 33 05 1A B8 AA 14 DC 38 65 07 DE 1A 90 16 02 3F C2 FC 30 81 2C 01 64 0D C8 AF 8E D2 4D 19
Calculated CRC Value	8ED24D19
Required Additional Data	
ICAO Code	LZ
LTP/FTP Orthometric Height (metres)	132.2