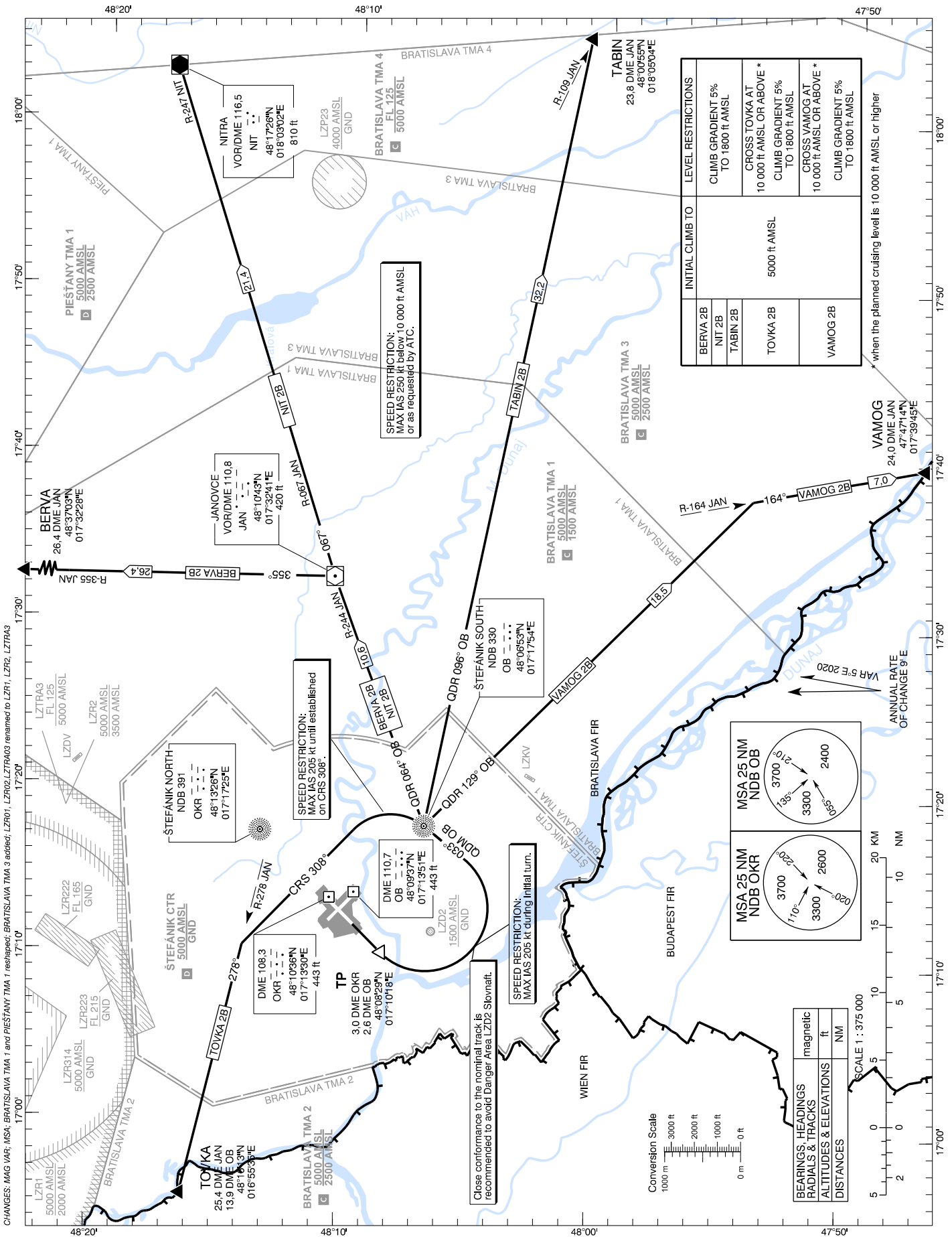


STANDARD DEPARTURE CHART -
INSTRUMENT (SID) - ICAO

TRANSITION ALTITUDE
10 000 ft

ŠTEFÁNIK RADAR 134,925 (118,975)
ŠTEFÁNIK TOWER 118,300 (118,700)
ŠTEFÁNIK ATIS DEPARTURE 128,655

BRATISLAVA/M. R. Štefánik (LZIB)
SID RWY 22
ACFT CAT A/B/C/D



CHANGES: MAG VAR: MSA: BRATISLAVA TMA 1 and PIESŤANY TMA 1 reshaped; BRATISLAVA TMA 3 added; LZR01, LZR02, LZTR03 renamed to LZR1, LZR2, LZTR43